

Bellevue Biltmore Resort

Clearwater, Florida

SPAR 2008

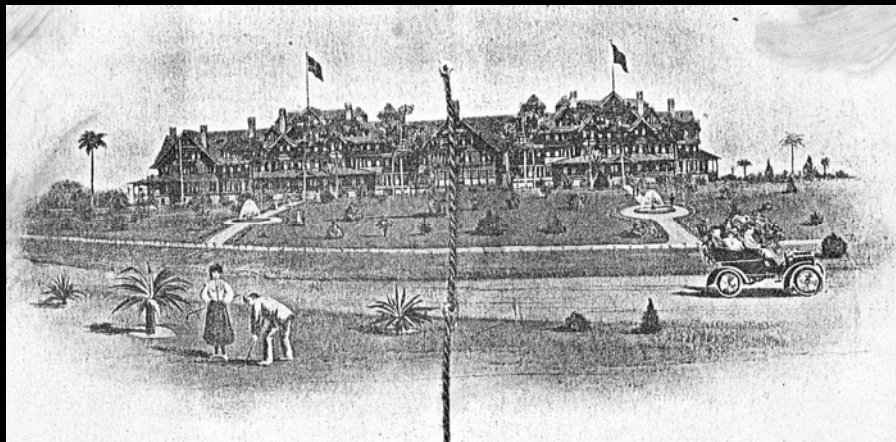
RIHA

R. J. Heisenbottle Architects, PA



Bellevue Biltmore Resort

Clearwater, Florida



RIHA

R. J. Heisenbottle Architects, PA



Belleview Biltmore Resort
1897



RIHA

R. J. Heisenbottle Architects, PA



WADE TRIM

Belleview Biltmore Resort



RIHA

R. J. Heisenbottle Architects, PA



WADE TRIM

Bellevue Biltmore Resort 1915



RIHA

R. J. Heisenbottle Architects, PA



Bellevue Biltmore Resort



RIHA

R. J. Heisenbottle Architects, PA



Belleview Biltmore Resort



RIHA

R. J. Heisenbottle Architects, PA



WADE TRIM

Belleview Biltmore Resort



RIHA

R. J. Heisenbottle Architects, PA



WADE TRIM

Belleview Biltmore Resort



RIHA

R. J. Heisenbottle Architects, PA



WADE TRIM

Belleview Biltmore Resort



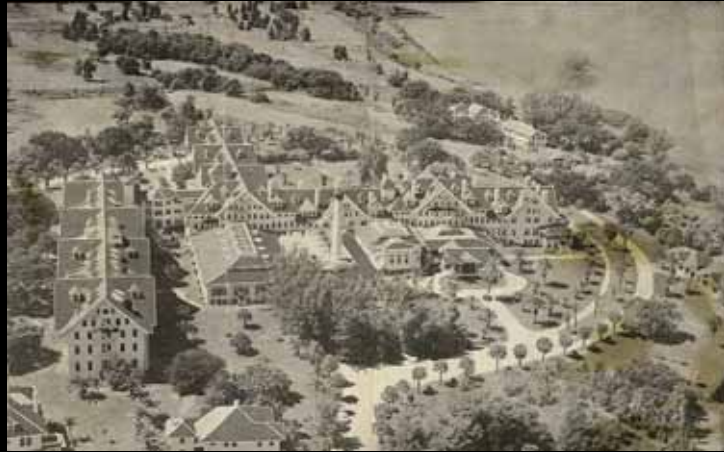
RIHA

R. J. Heisenbottle Architects, PA



WADE TRIM

Belleview Biltmore Resort
1944



RIHA

R. J. Heisenbottle Architects, PA



WADE TRIM

Belleview Biltmore Resort
2007

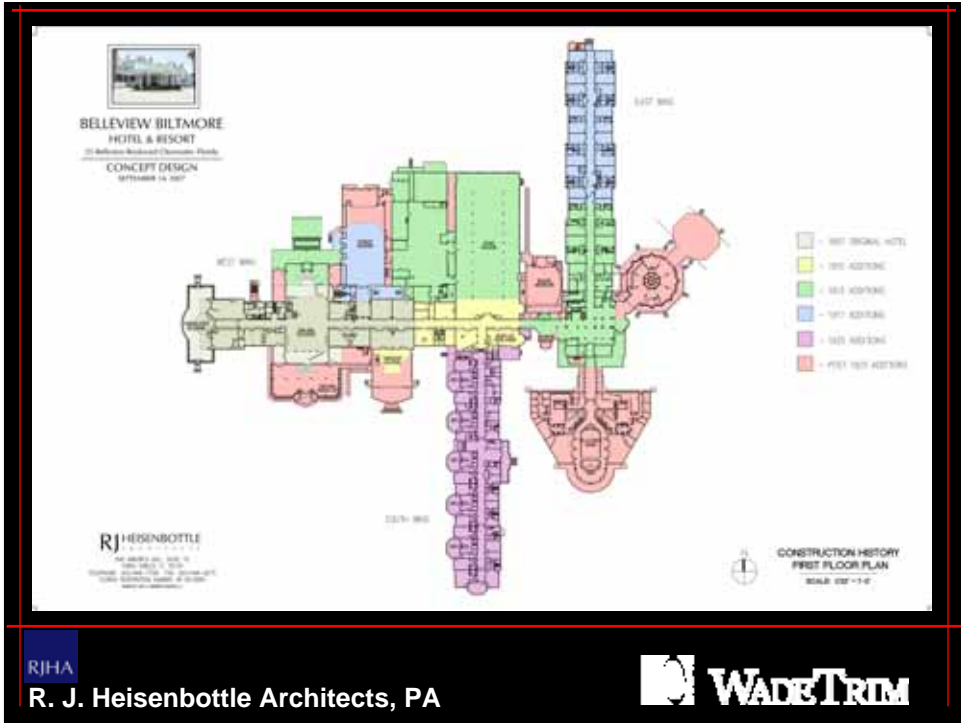


RIHA

R. J. Heisenbottle Architects, PA

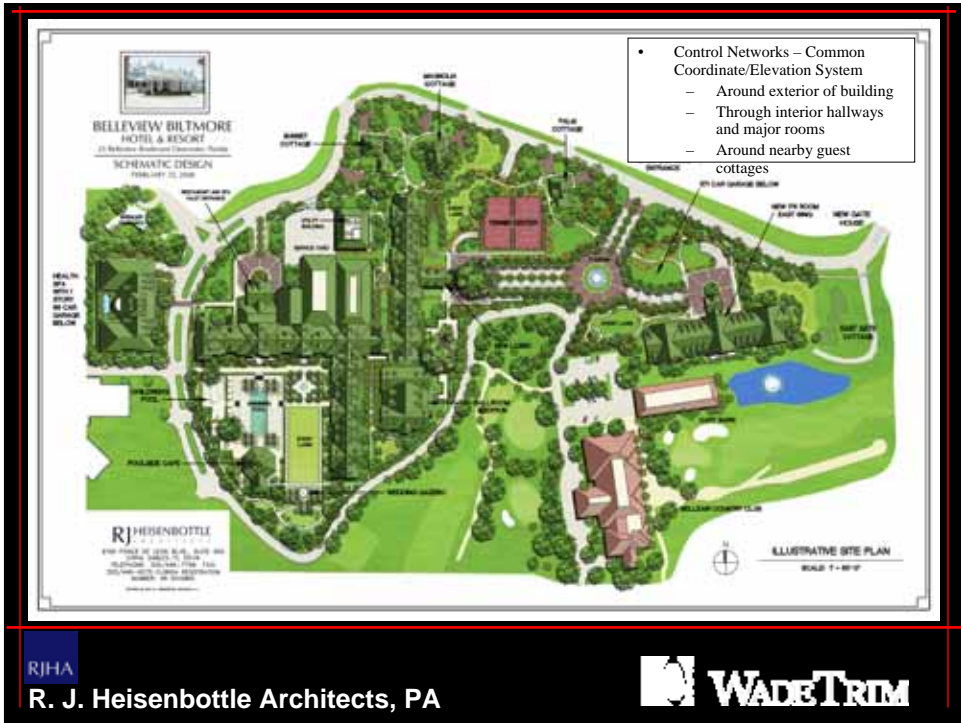


WADE TRIM



RIHA

R. J. Heisenbottle Architects, PA



RIHA

R. J. Heisenbottle Architects, PA



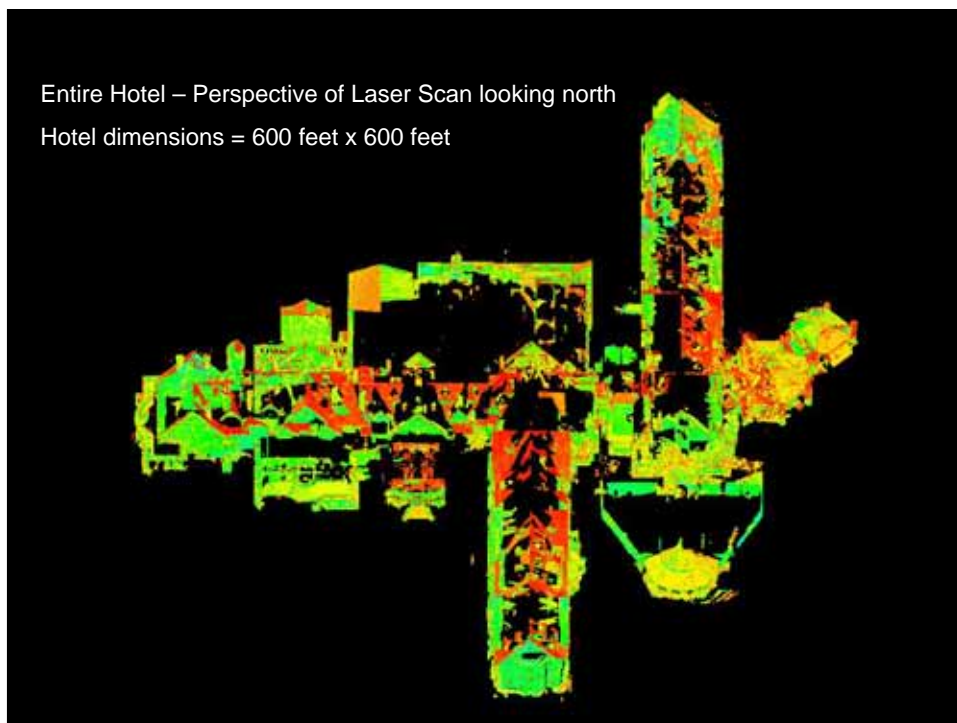
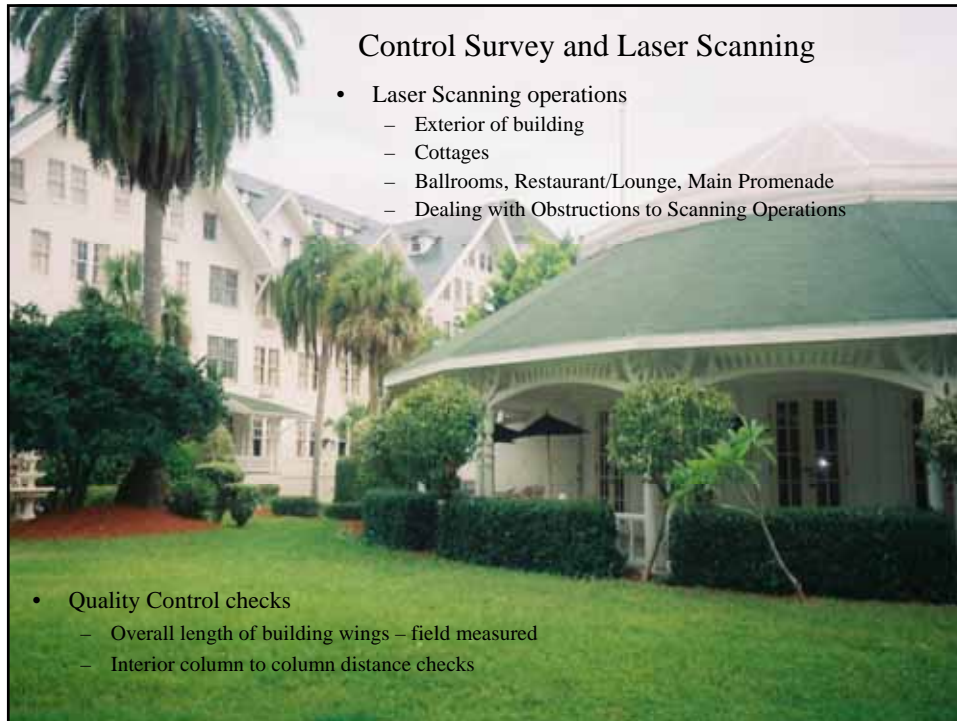




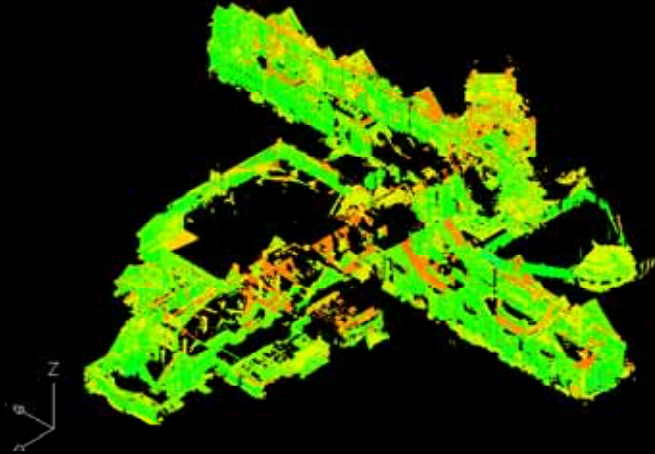
Staying unnoticed was sometimes difficult



- Closed traverses and level loops
- Taped Control Points on Floor
- Tripod Floor Trees to Protect Wood Floors



Belleview Biltmore Resort

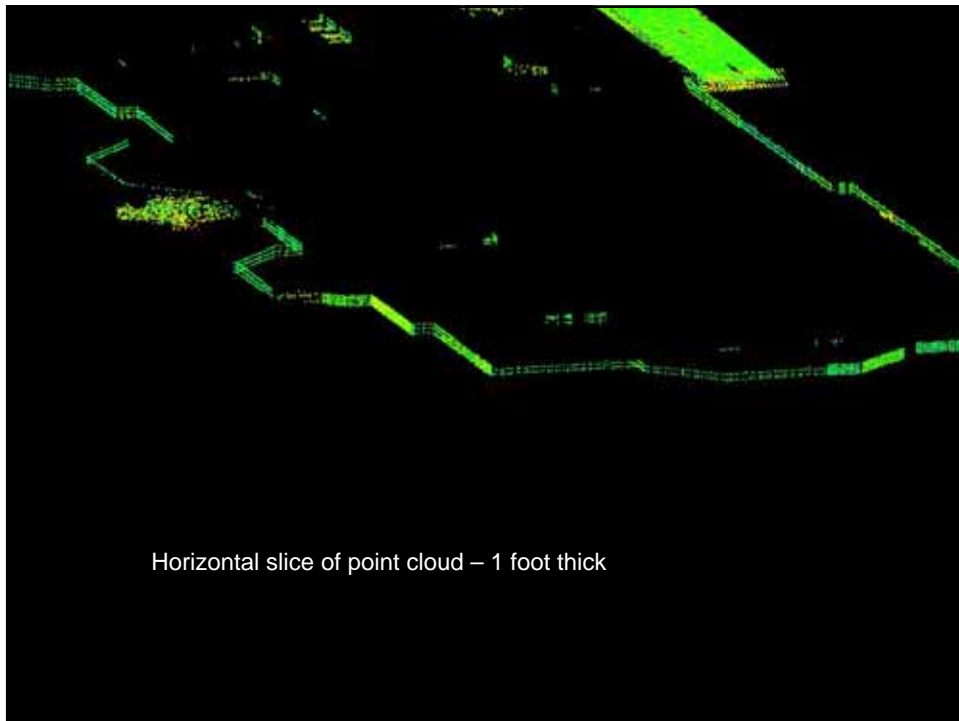


RIHA

R. J. Heisenbottle Architects, PA



WADE TRIM



Horizontal slice of point cloud – 1 foot thick



Quality Control Check:

- Orient Slice to Plan View
- Measure From Corner to Corner on Exterior of Building
- Compare to Field Measurement

Distance checks on South Wing of Hotel

Scanned Distances for overall length (north to south) of South Wing
(See Exhibit A - .jpg picture)

Surveyed distances by total station and Electronic Distance Measurement (EDM) for overall length (north to south) and distances to bay windows from southwest corner
(See Exhibit B – Survey sketch) (Also see Exhibit C - .jpg picture for illustration of where distances were measured to on the bay windows.

Scanned horizontal distance from southwest corner to northwest corner	- 293.02'
Surveyed overall distance by total station / Electronic Distance Measurement)	- 292.96'
Scanned horizontal distance from southeast corner to northeast corner	- 292.99'
Overall distance on east side of South Wing from Southeast Corner to northeast corner from survey drawing (fp-polygon-00.dwg)	- 293.1'

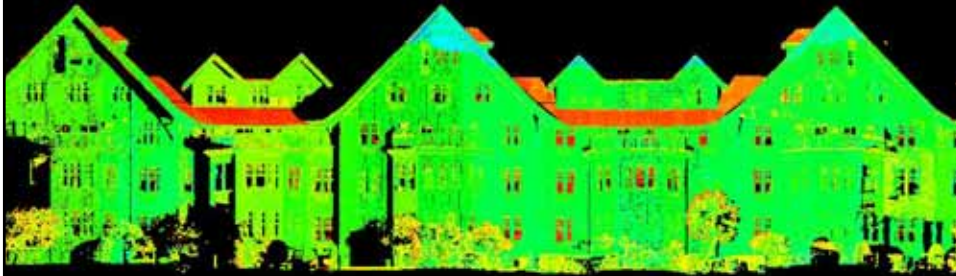
For distance comparisons from Southwest corner of South Wing to the Bay windows see Exhibit B.

RIHA

R. J. Heisenbottle Architects, PA

 WADE TRIM

Point Cloud in elevation view



Deliverables to RJ Heisenbottle Architects:

- Registered Point Clouds for use in Cloudworx for Autocad
- Quality Control Measurement Report

Belleview Biltmore Resort Schematic Design



RIHA

R. J. Heisenbottle Architects, PA

 WADE TRIM

Belleview Biltmore Resort



RIHA

R. J. Heisenbottle Architects, PA



WADE TRIM

Belleview Biltmore Resort



RIHA

R. J. Heisenbottle Architects, PA



WADE TRIM

Bellevue Biltmore Resort Magnolia Cottage

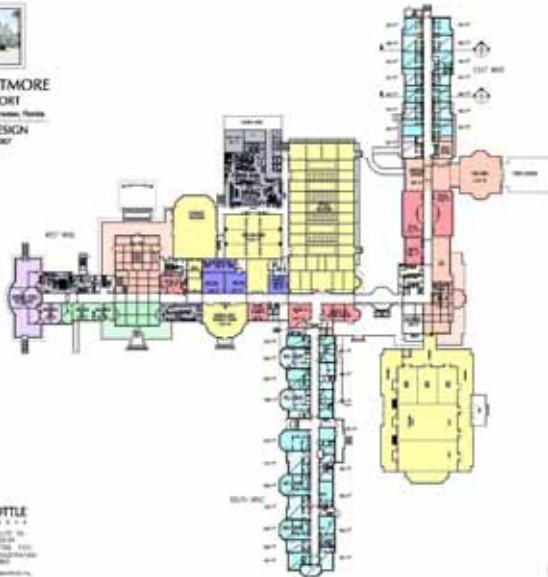


RIHA

R. J. Heisenbottle Architects, PA




BELLEVUE BILTMORE
HOTEL & RESORT
22 Bellevue Boulevard-Corvallis, Oregon
SCHEMATIC DESIGN
NOVEMBER 15, 2007



RJ HEISENBOTTLE
ARCHITECTS
1000 UNIVERSITY AVENUE, SUITE 100
CORVALLIS, OREGON 97331
TEL: 503.838.1100 FAX: 503.838.1101
WWW.RJHEISENBOTTLE.COM

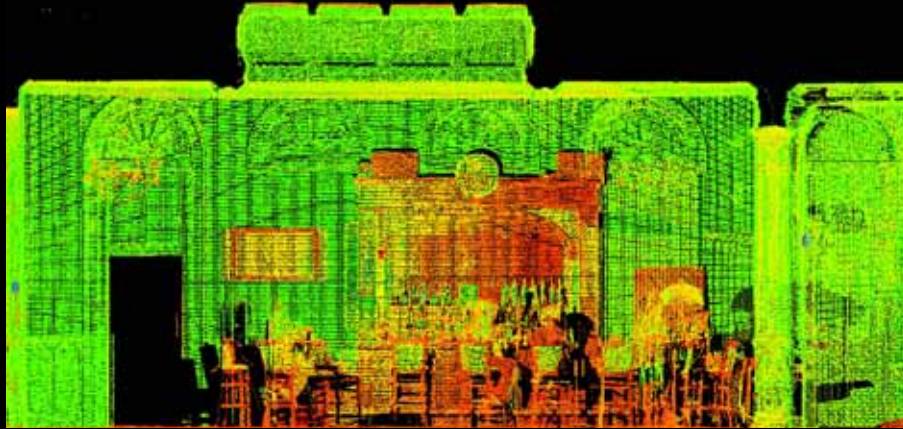
PROPOSED GROUND FLOOR PLAN
SCALE: 1/8" = 1'-0"

RIHA

R. J. Heisenbottle Architects, PA



Belleview Biltmore Resort
Schematic Design



RIHA

R. J. Heisenbottle Architects, PA



Belleview Biltmore Resort & Spa
Lobby Lounge



RIHA



R. J. Heisenbottle Architects, PA



Belleview Biltmore Resort

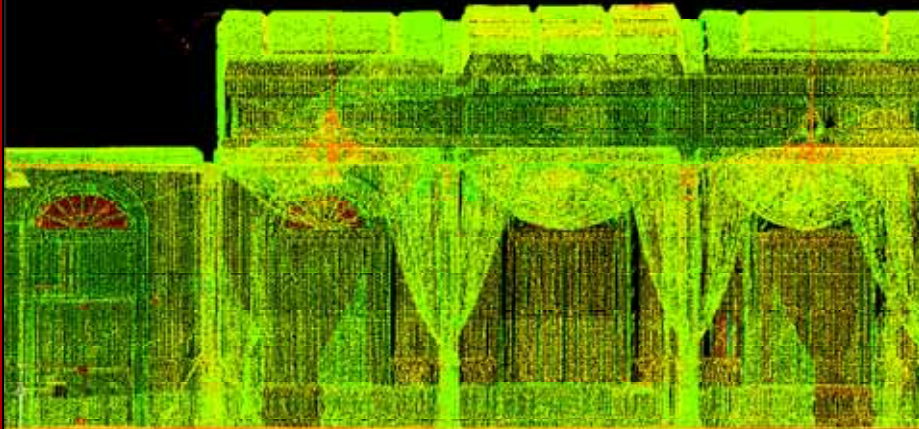


RIHA

R. J. Heisenbottle Architects, PA



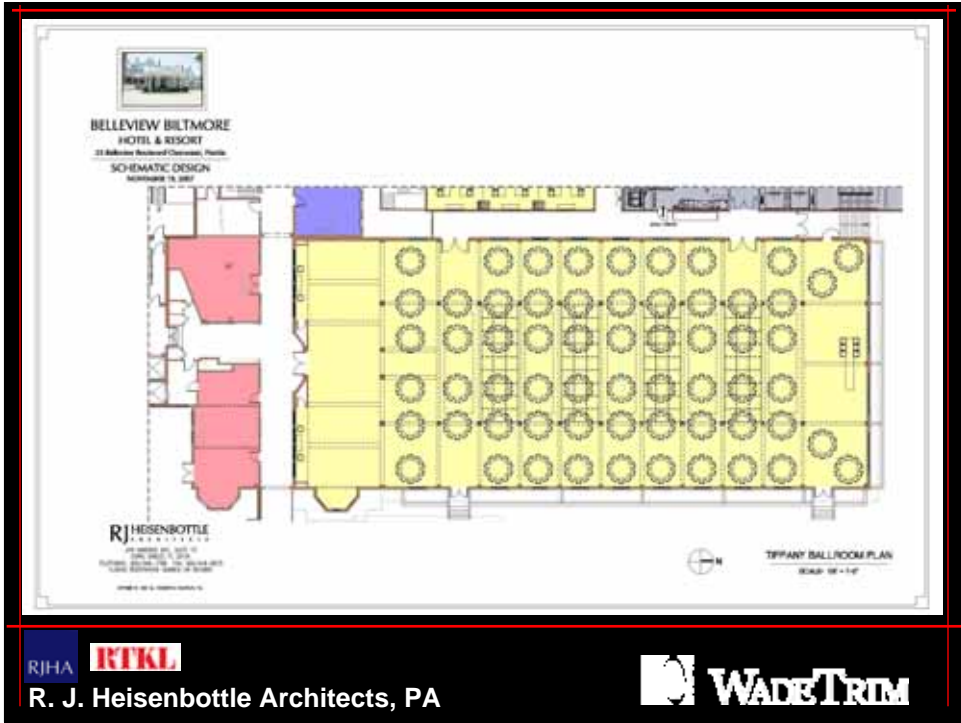
Belleview Biltmore Properties Concept Design



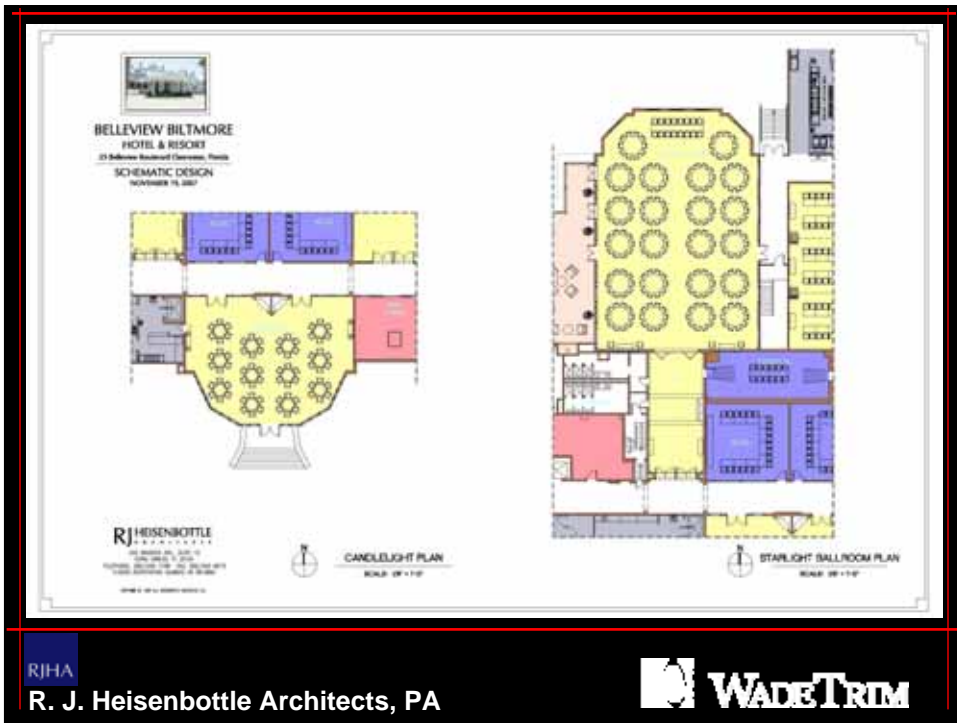
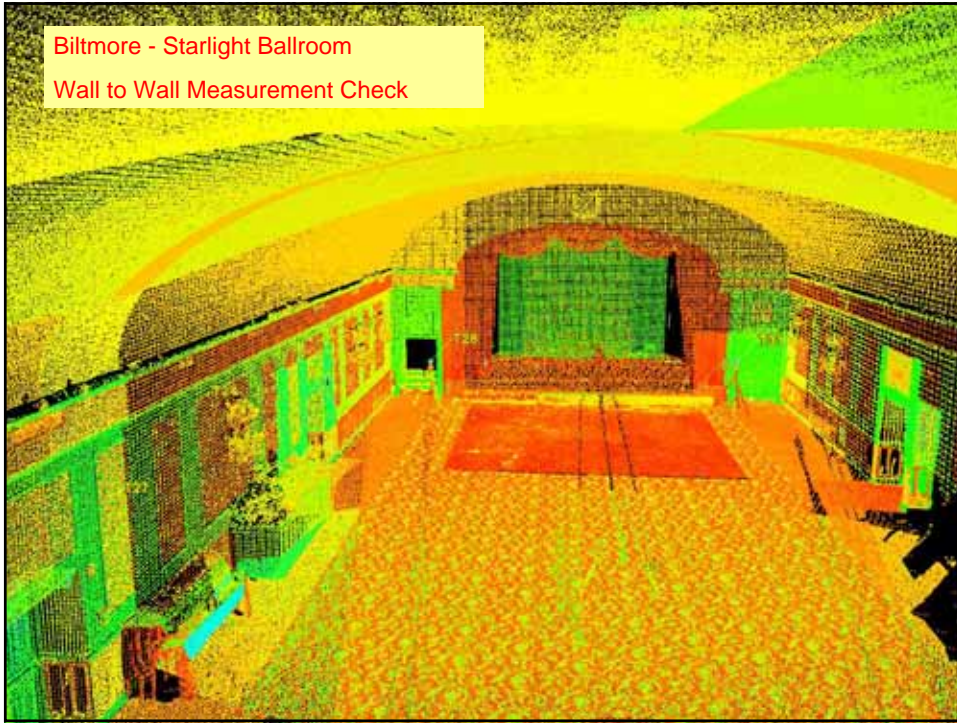
RIHA

R. J. Heisenbottle Architects, PA





Biltmore - Starlight Ballroom
Wall to Wall Measurement Check



RIHA
R. J. Heisenbottle Architects, PA

WADE TRIM



RIHA **RTKL**
R. J. Heisenbottle Architects, PA



Belleview Biltmore Resort & Spa Restored Starlight Ballroom



RIHA **RTKL**
R. J. Heisenbottle Architects, PA

