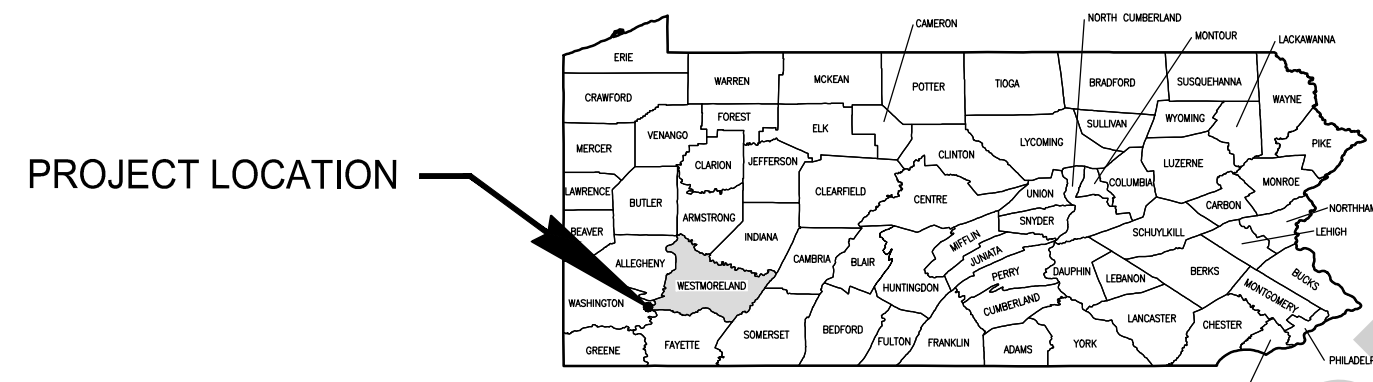
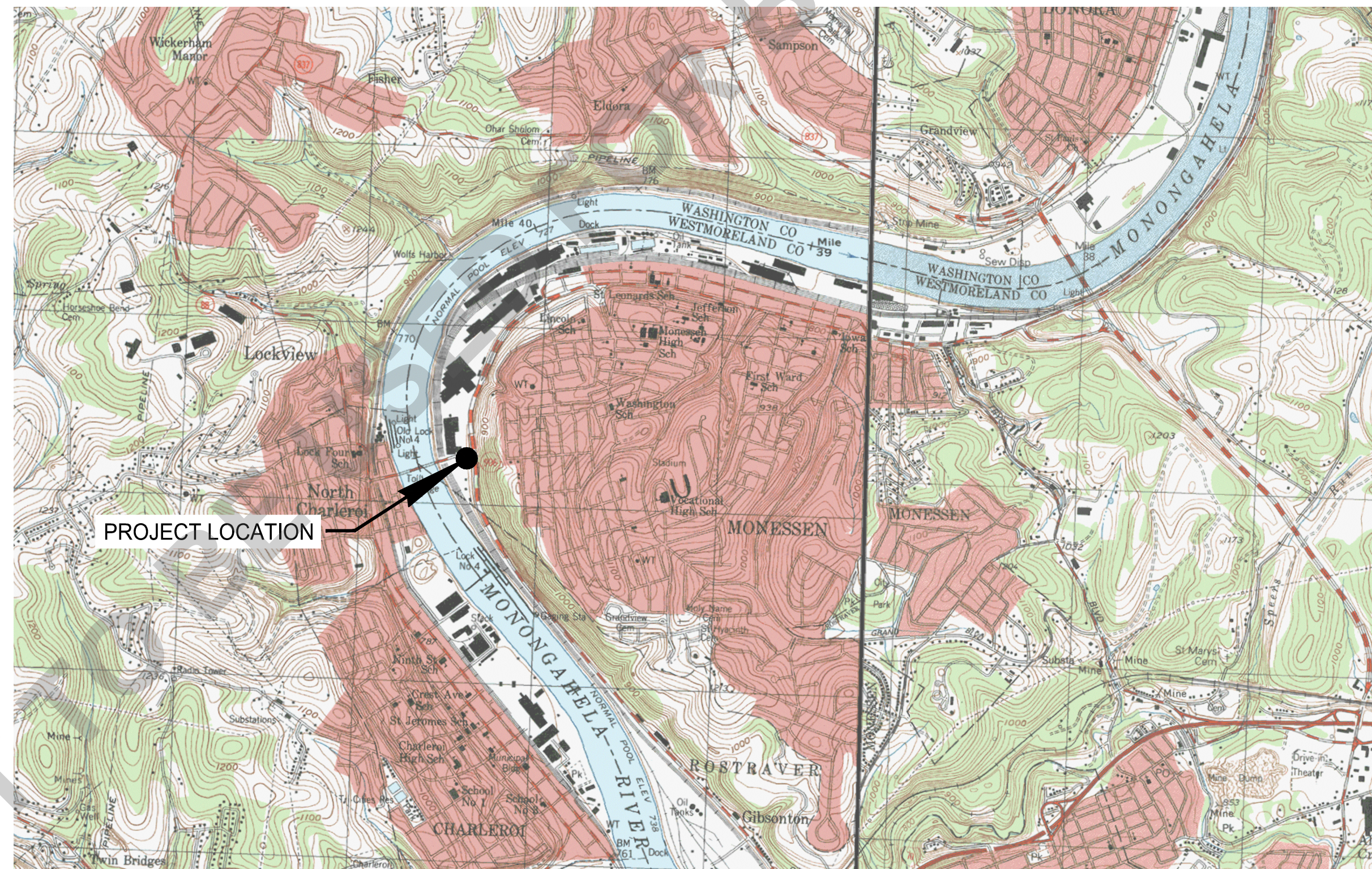


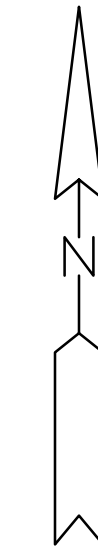
MON VALLEY SEWAGE AUTHORITY OF THE BOROUGH OF DONORA AND THE CITY OF MONESSEN, PA AUBREY AVE EJECTOR STATION REPLACEMENT ISSUED FOR BIDDING, MAY 2026



KEY MAP
NOT TO SCALE



LOCATION MAP
SCALE: 1" = 2,000'



STEVE WALKO
CHAIRMAN

THOMAS SALAK
VICE-CHAIRMAN

LEWIS MARRACCINI
SECRETARY/TREASURER

PAUL BERARDELLI
ASSISTANT SECRETARY/TREASURER

DENNIS WINCE
BOARD MEMBER

SEAN GASKILL
GENERAL MANAGER

JEFF KUBASIAK
CHIEF OPERATOR



DATE: MAY 2026
ISSUED FOR: BIDDING

NOT VALID FOR CONSTRUCTION UNLESS SIGNED AND DATED:

JOB NO. MVS2023-01H	SHEET G-000
-------------------------------	-----------------------

WADE TRIM

Four Gateway Center
444 Liberty Avenue, Suite 300
Pittsburgh, PA 15222
412.454.5566
www.wadetrिम.com

PREPARED UNDER THE SUPERVISION OF:

Jason J. McBride

JASON MCBRIDE, P.E. 059552
LICENSE NO.

ISSUED FOR:
BIDDING MAY, 2026

PRELIMINARY
NOT FOR CONSTRUCTION

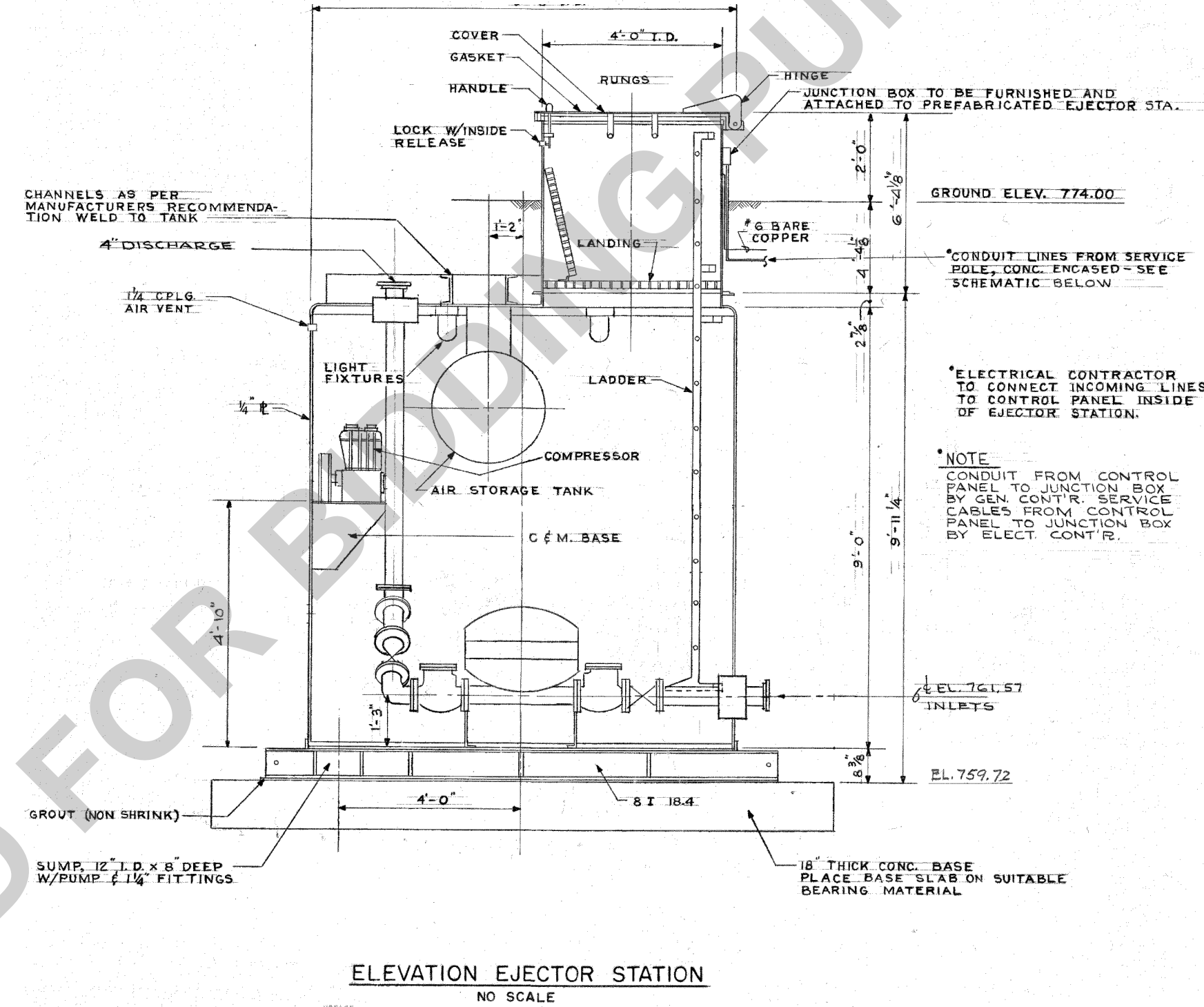
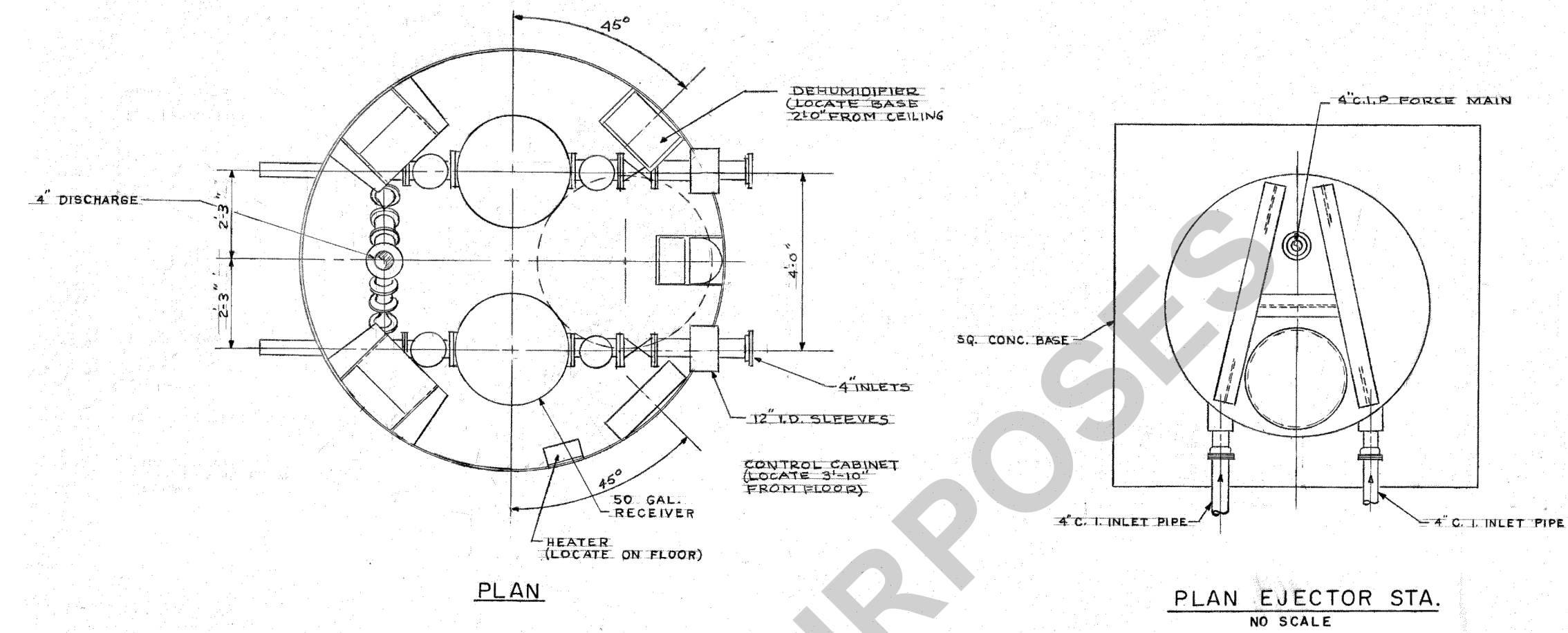
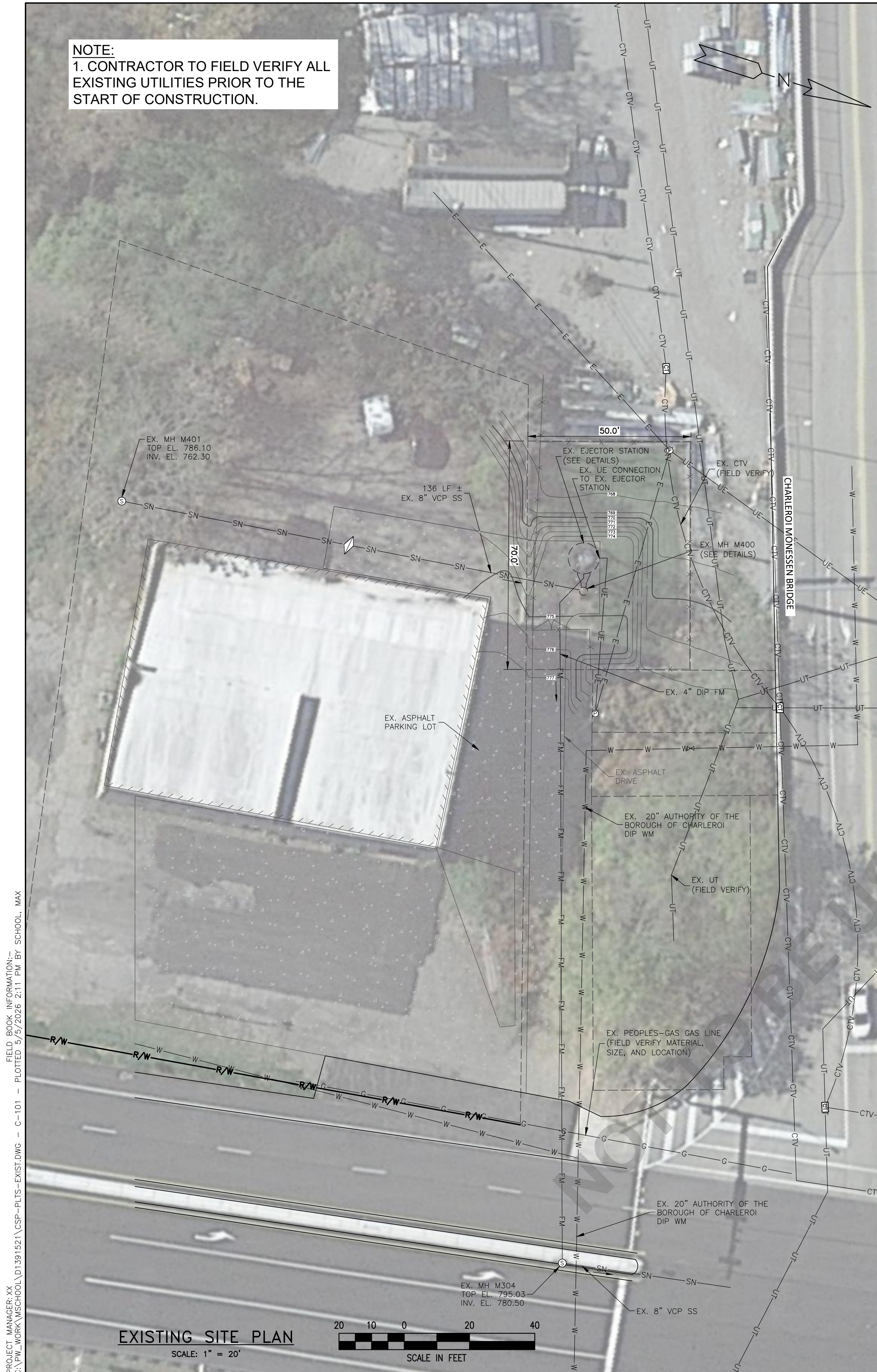
PROJECT MANAGER: C:\WORK\MCHSCHOOL\01391521\GCS-PLTS-COVER.DWG - G-000 - PLOTTED: 5/27/2025 2:11 PM BY: SCHOOL_MAX



**Know what's below.
Call before you dig.**
Dial 8-1-1 or 1-800-242-1776
Project Serial Number: 20233323115-000

© Wade Trim Group, Inc. A

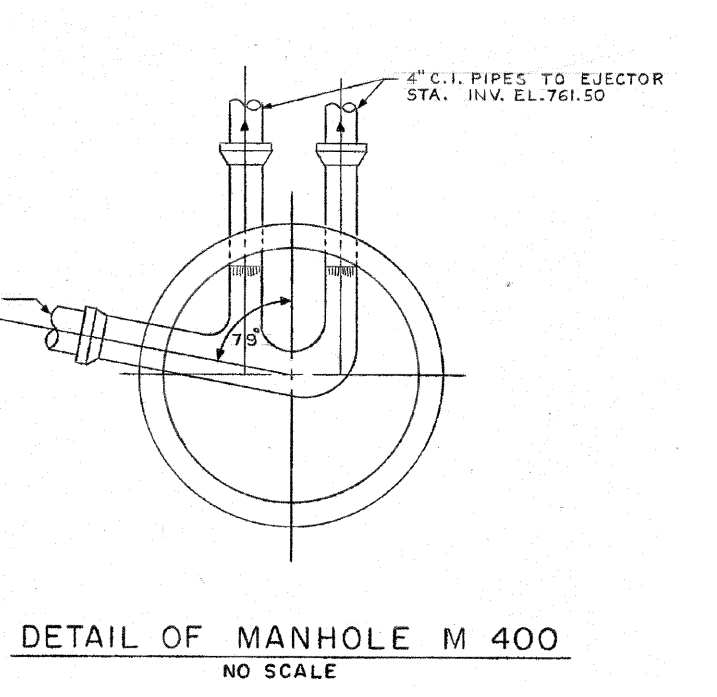
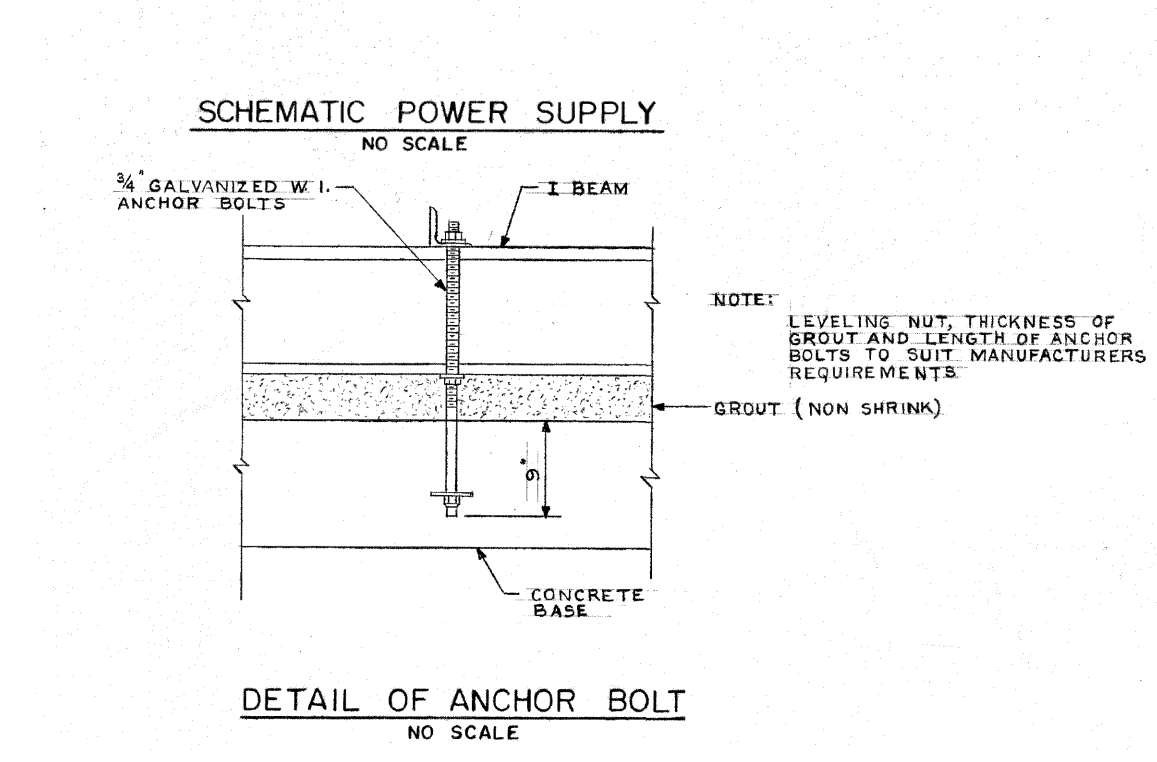
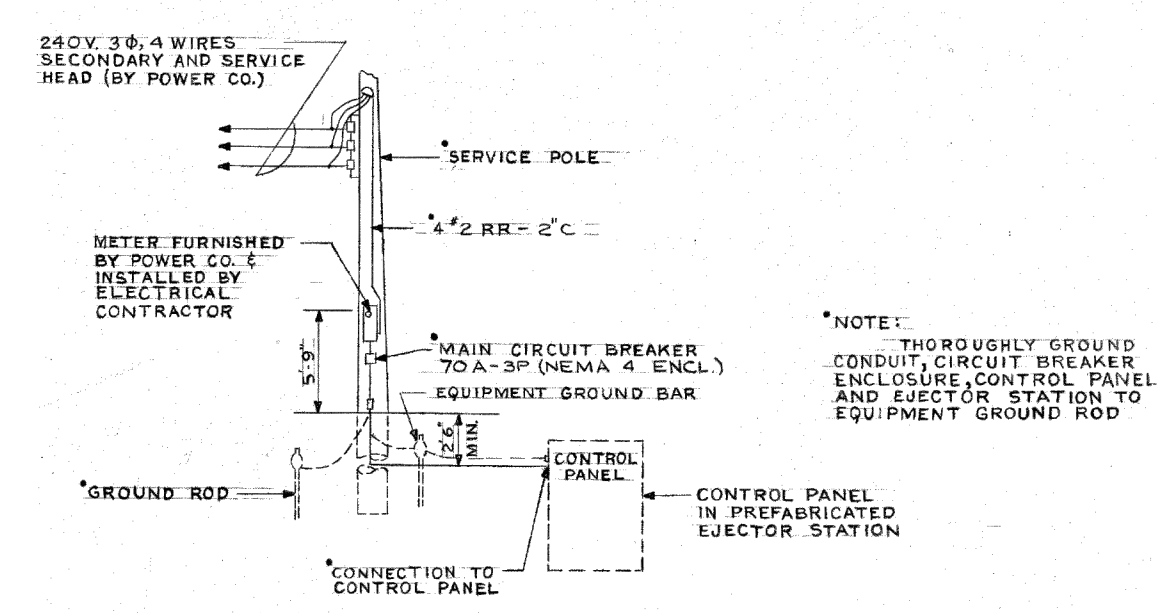
NOTE:
1. CONTRACTOR TO FIELD VERIFY ALL EXISTING UTILITIES PRIOR TO THE START OF CONSTRUCTION.



DH-23
AUBREY AVE. EJECTOR STA.

EL.	1	2	NOTES
EL. 768.00	1	2	
	7	7	
	13	13	
EL. 765.00	15	15	NOTE 1.
	17	17	
	30	30	
	34	34	
	37	37	
	40	40	
	42	42	
	13	13	
	27	27	
	23	23	
EL. 756.00	25	25	
	28	28	
	19	19	
EL. 750.00	4	4	
	7	7	
EL. 745.50	4	4	
	7	7	
EL. 743.50	5	5	NOTE 2.
	7	7	
	21	21	
	24	24	
EL. 739.50	1	1	
	3	3	
	7	7	
	18	18	
	19	19	

FOR LEGEND OF DRILL HOLES SEE SHEET NO. SCALE 1"=6'-0"



REV#	DATE	DESCRIPTION	BY

WADE TRIM
 Four Gateway Center, Suite 300
 Philadelphia, PA 19122
 412.454.5566
 www.wadetrिम.com



MON VALLEY SEWAGE AUTHORITY
 OF THE BOROUGH OF DONORA AND
 THE CITY OF MONESSEN, PENNSYLVANIA
**AUBREY AVE EJECTOR STATION
 EXISTING SITE AND DETAILS**



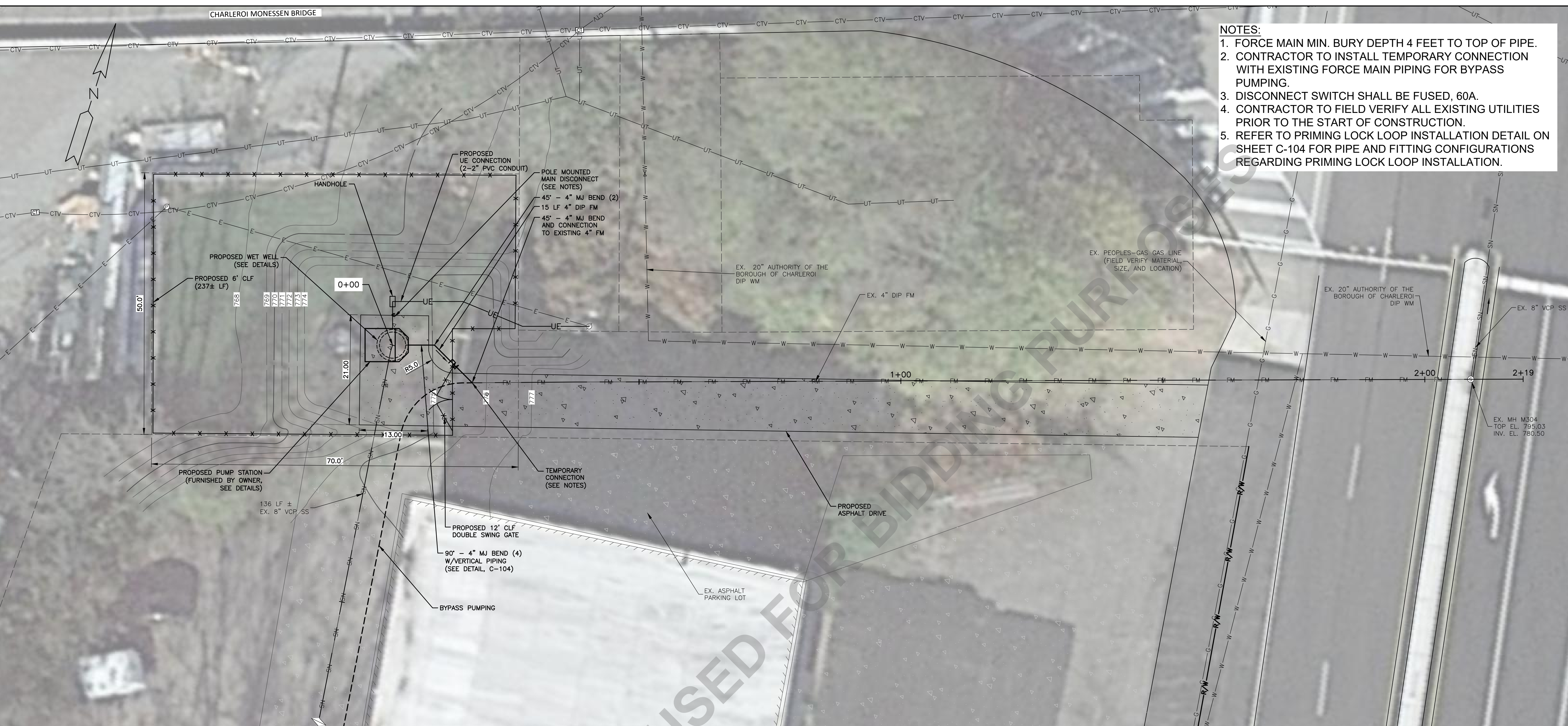
**PRELIMINARY
 NOT FOR CONSTRUCTION**

ISSUED FOR: PERMITTING BIDDING	DATE: 09/2025 05/2026	BY: CJJ CJJ
JOB NO. MVS2023-01H	DATE: MAY 2026	
SHEET C-101	ISSUED FOR: BIDDING	

PROJECT MANAGER: KY...
 FIELD BOOK INFORMATION:
 C:\WORK\MCHPOOL\139152\1\CSPP-PLTS-EXIST.DWG - C-101 - PLOTTED 5/2/2026 2:11 PM BY: SCHOOL, MAX

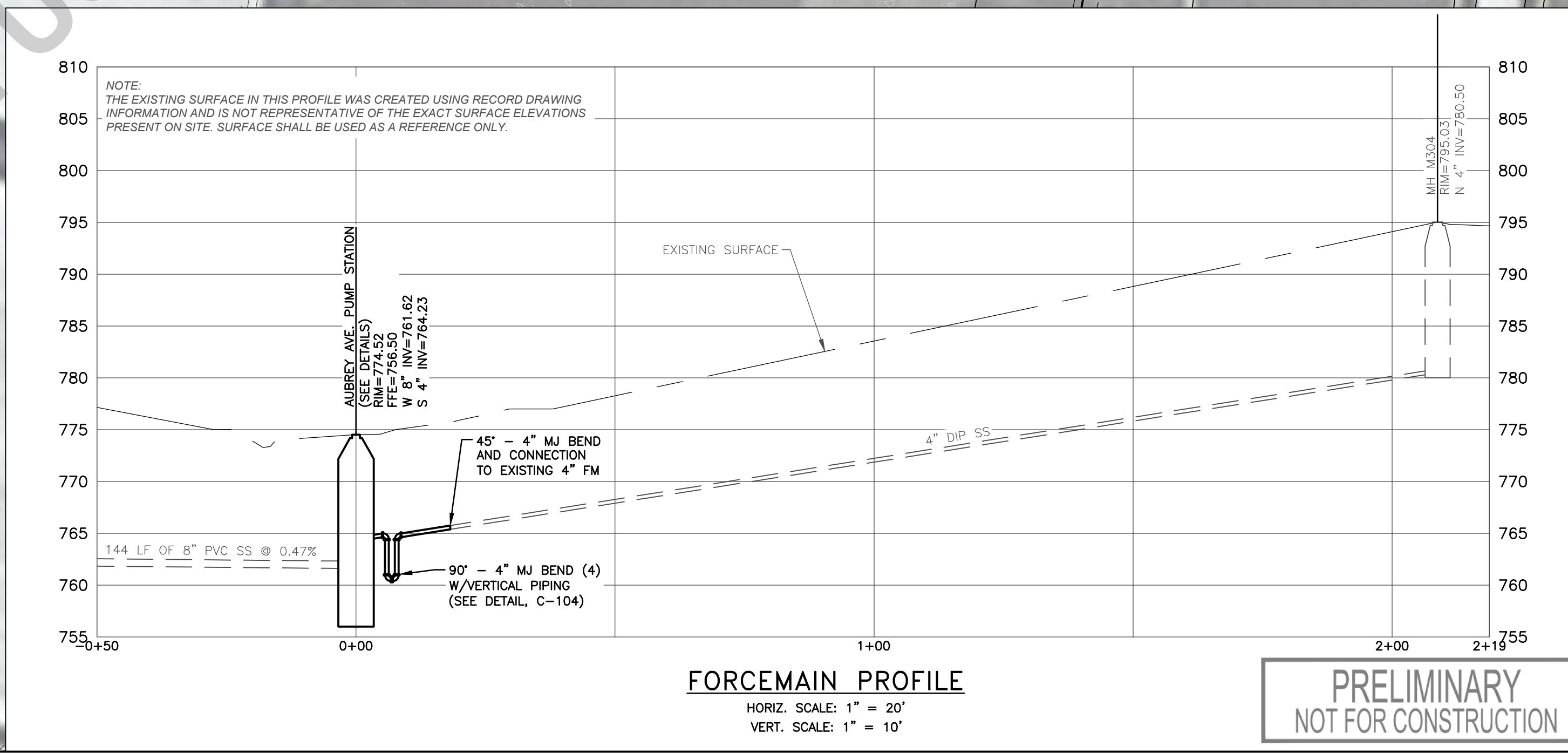
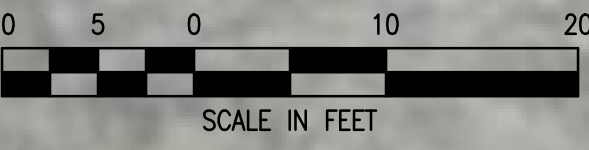
© Wade Trim Group, Inc.

PROJECT MANAGER: CVI WORKS ARCHITECTS FIELD BOOK INFORMATION: C-103 - PLOTTED 5/17/2026 2:11 PM BY: SCHOOL, MAX



- NOTES:**
1. FORCE MAIN MIN. BURY DEPTH 4 FEET TO TOP OF PIPE.
 2. CONTRACTOR TO INSTALL TEMPORARY CONNECTION WITH EXISTING FORCE MAIN PIPING FOR BYPASS PUMPING.
 3. DISCONNECT SWITCH SHALL BE FUSED, 60A.
 4. CONTRACTOR TO FIELD VERIFY ALL EXISTING UTILITIES PRIOR TO THE START OF CONSTRUCTION.
 5. REFER TO PRIMING LOCK LOOP INSTALLATION DETAIL ON SHEET C-104 FOR PIPE AND FITTING CONFIGURATIONS REGARDING PRIMING LOCK LOOP INSTALLATION.

PROPOSED SITE PLAN
SCALE: 1" = 10'



FORCEMAIN PROFILE
HORIZ. SCALE: 1" = 20'
VERT. SCALE: 1" = 10'

PRELIMINARY
NOT FOR CONSTRUCTION

DATE: MAY 2026
ISSUED FOR: BIDDING

REV#	DATE	DESCRIPTION	BY

WADE TRIM
Four Gateway Center, Suite 300
Philadelphia, PA 19124
412.454.5566
www.wadetrim.com

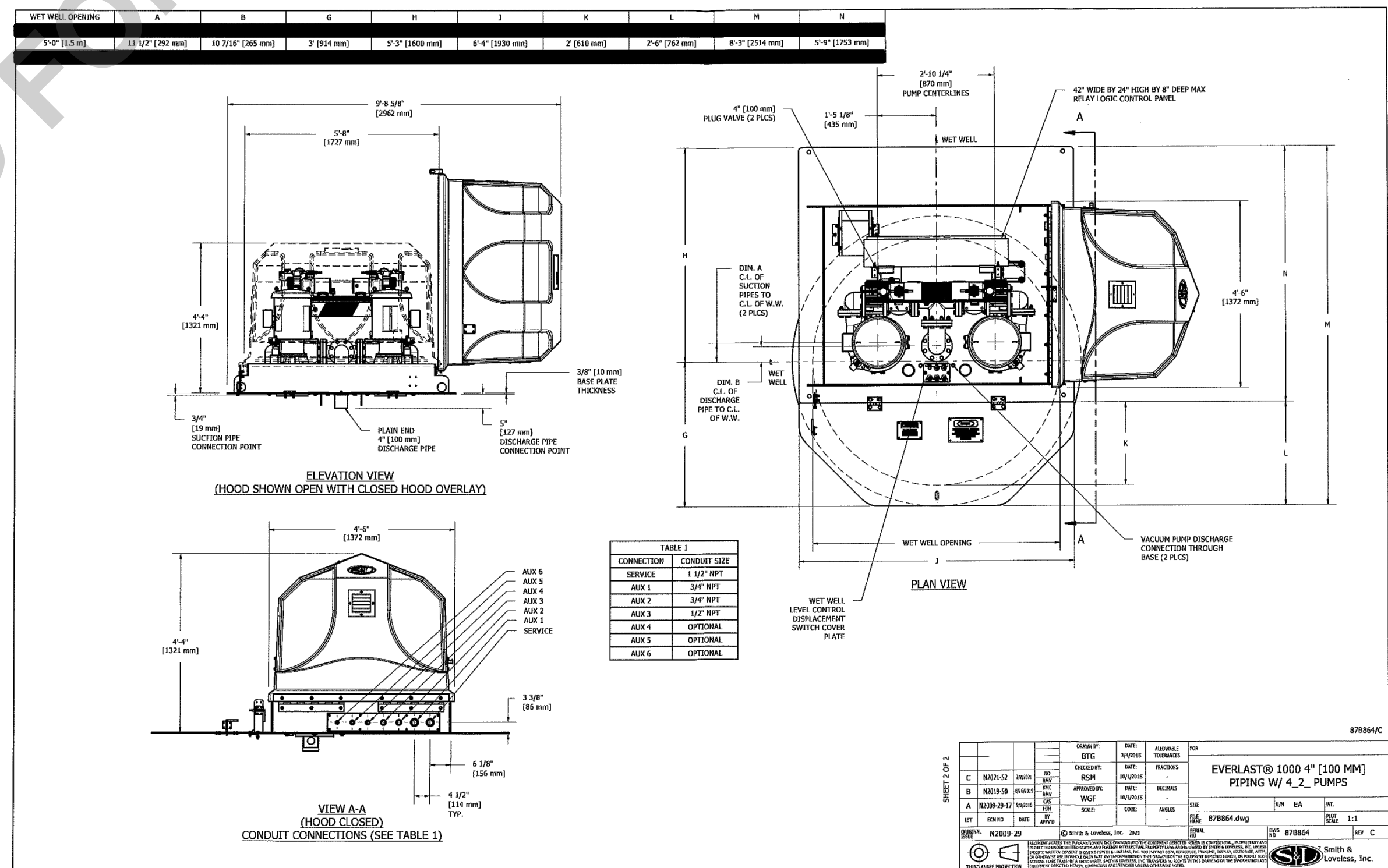
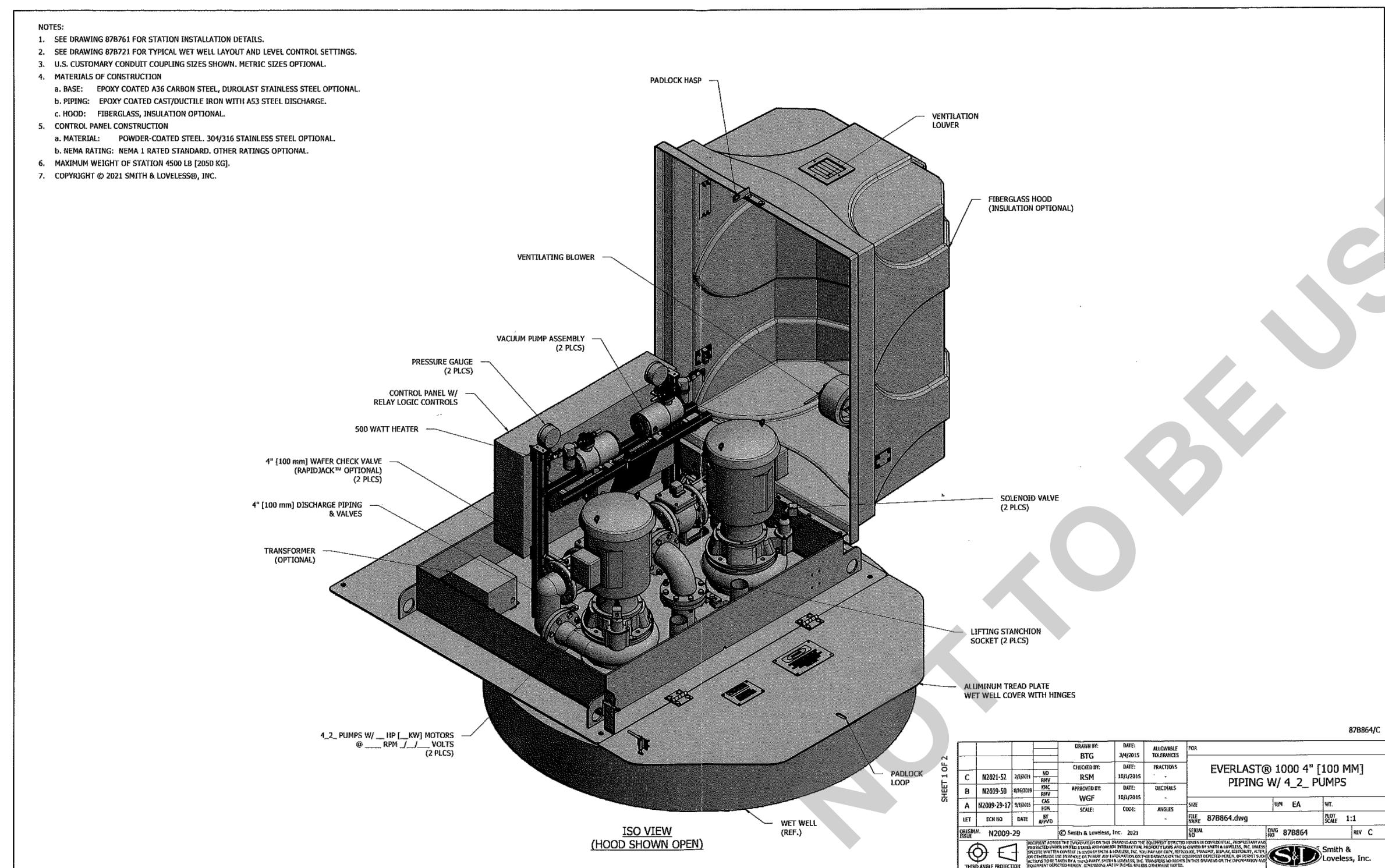
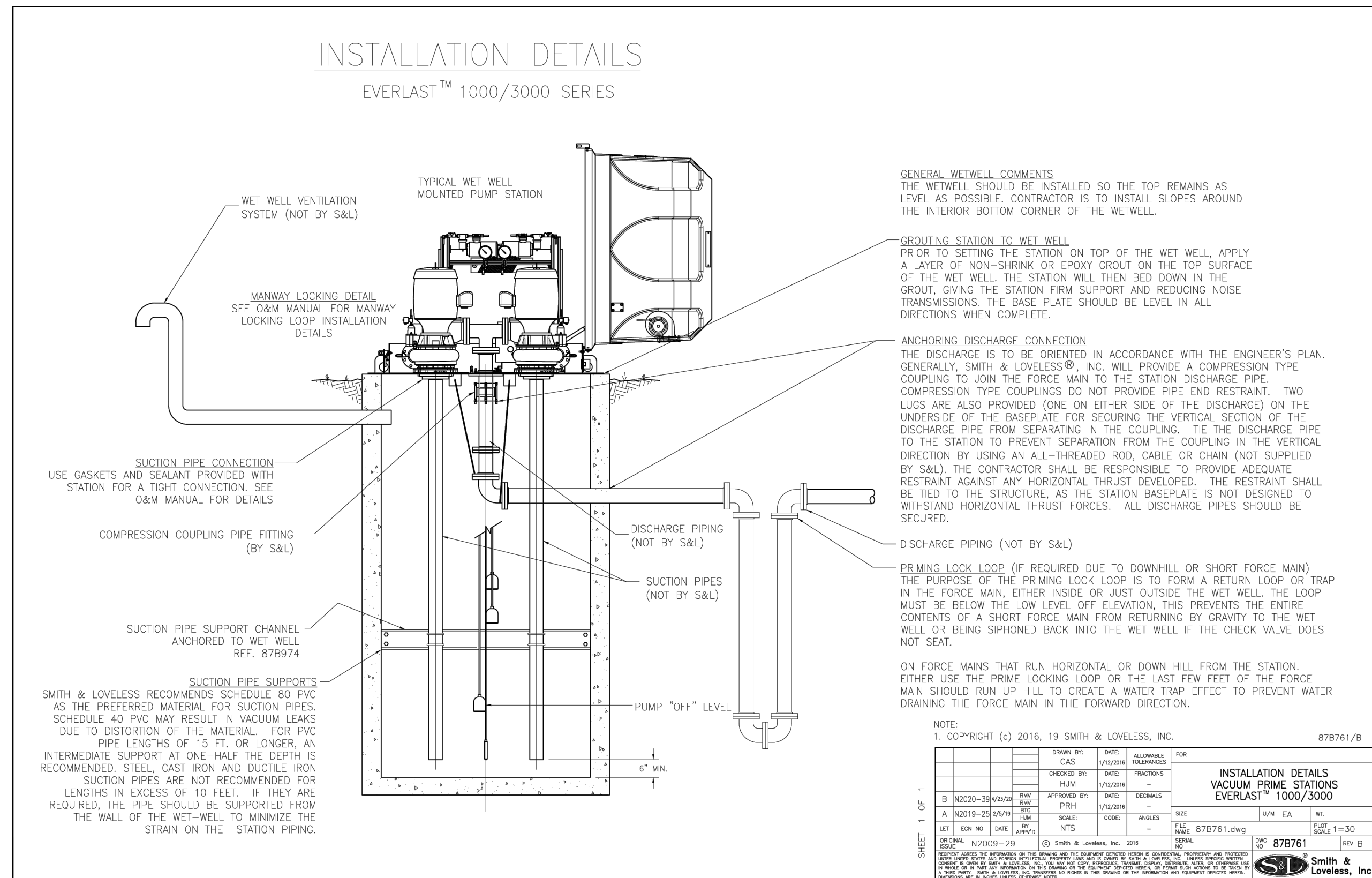


MON VALLEY SEWERAGE AUTHORITY
OF THE BOROUGH OF DONORA AND
THE CITY OF MONESSEN, PENNSYLVANIA
AUBREY AVE EJECTOR STATION
PROPOSED SITE PLAN

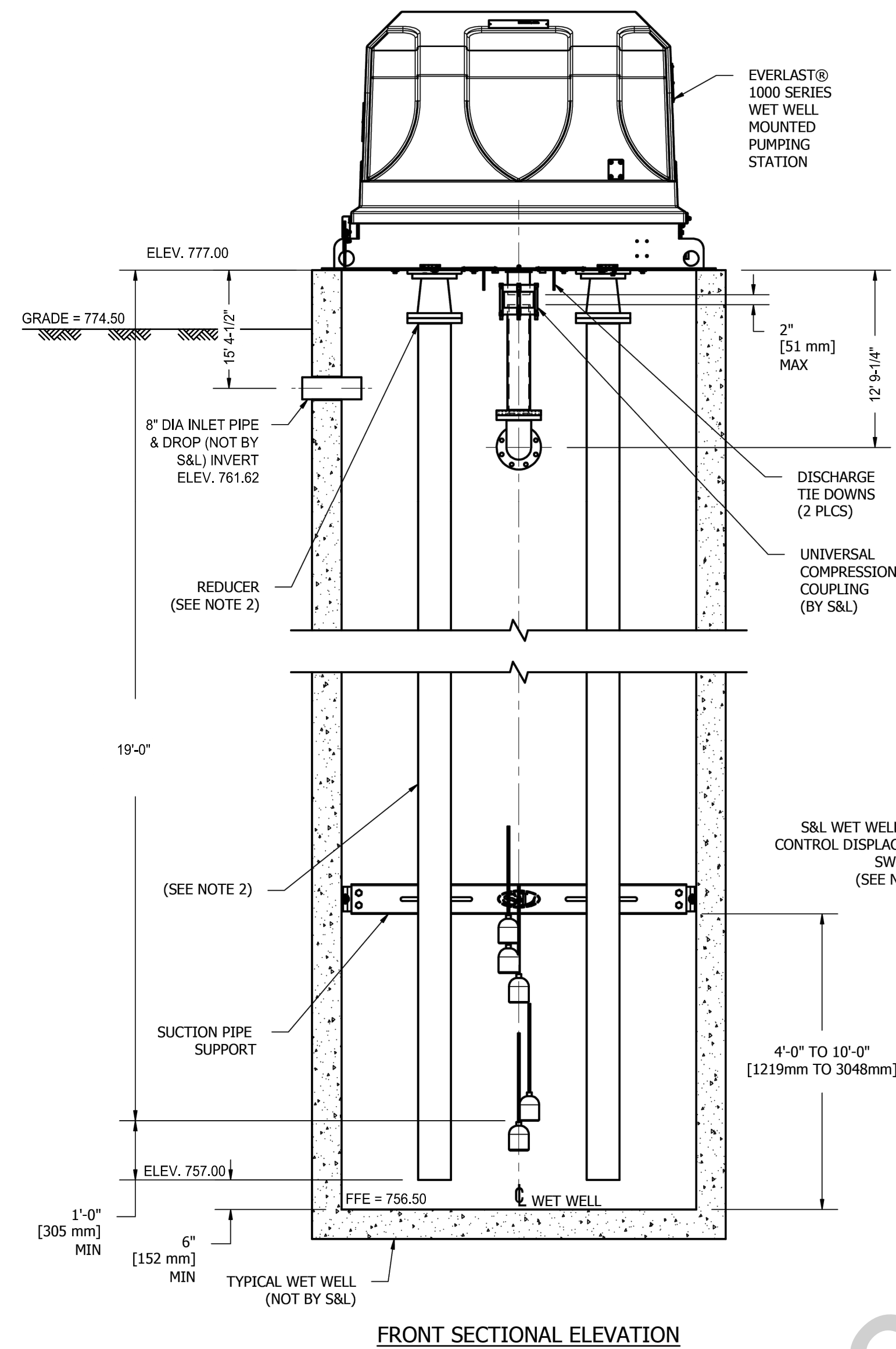
ISSUED FOR: BIDDING
DATE: 05/2026
BY: C.J.J.

JOB NO. MVS2023-01H
SHEET C-103

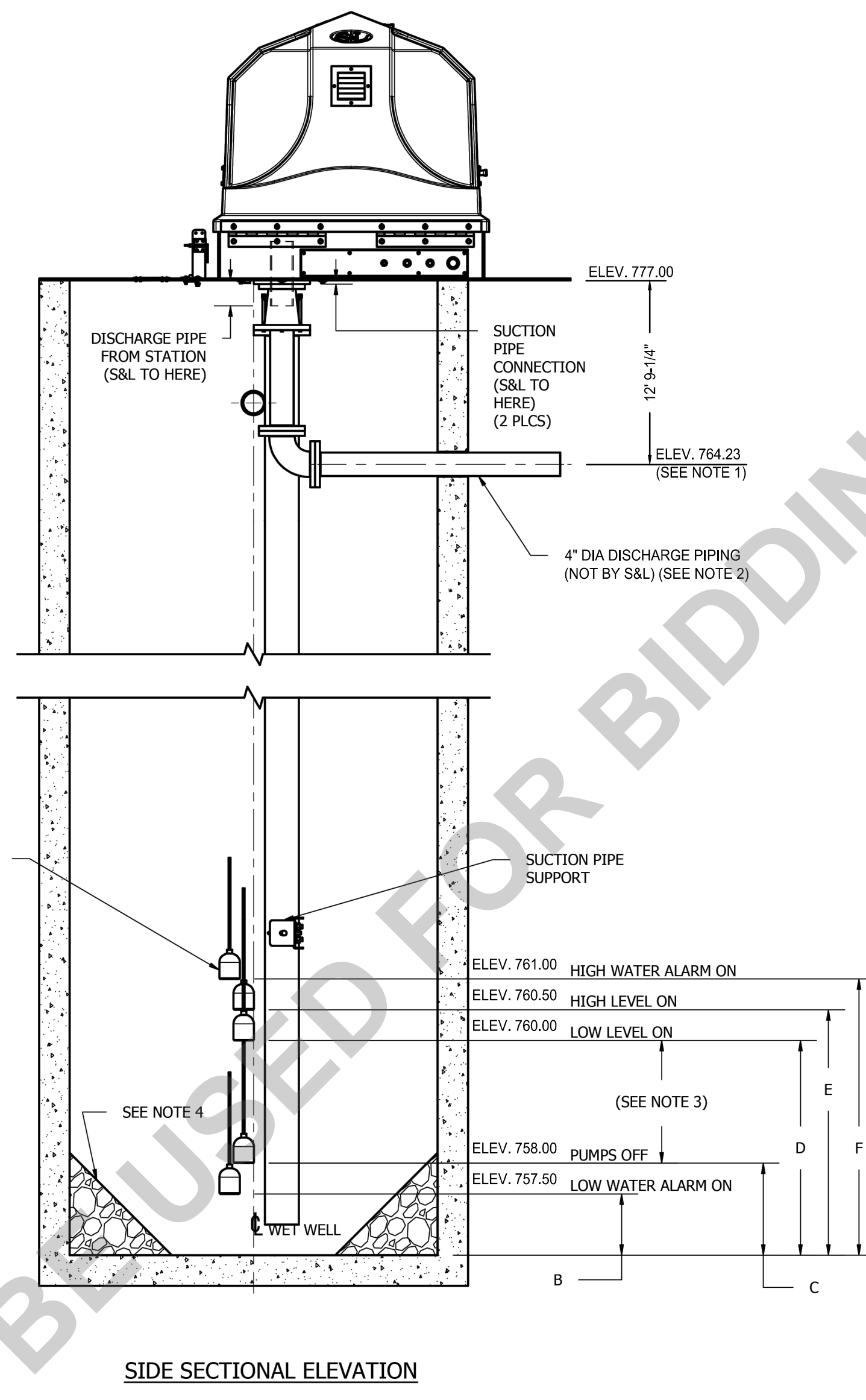
PROJECT MANAGER: X
C:\WORK\MCH001\01391521\CD1-PLTS-DETAILS.DWG - C-104 - PLOTTED 5/19/2026 2:12 PM BY: SCHOOL_MAX



PROJECT MANAGER: X
 C:\WORK\MCH001\01391521\CD1-PLTS-DETAILS.DWG - C-105 - PLOTTED 5/19/2026 2:12 PM BY: SCHOOL_MAX



FRONT SECTIONAL ELEVATION



SIDE SECTIONAL ELEVATION

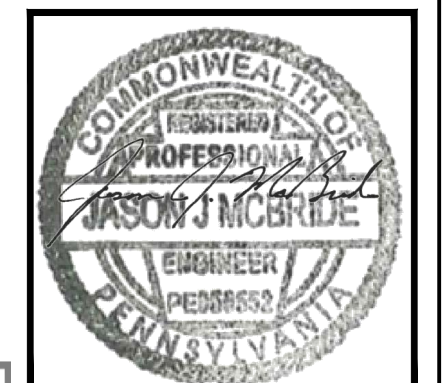
NOTES:

- SEE SHEET C-104 FOR PRIMING LOCK LOOP AND ADDITIONAL STATION INSTALLATION DETAILS.
- THE WET WELL VOLUME AS DEFINED BETWEEN THE LOW LEVEL "ON" AND THE PUMPS "OFF" SETTINGS WILL BE EQUAL TO, OR GREATER THAN, THE PUMPING RATE PER MINUTE OF THE STATION SO THE STATION WILL OPERATE FOR AT LEAST ONE MINUTE PER CYCLE. SEE TABLE 1 FOR LEVEL SETTINGS.
- PROVIDE 45° SLOPE IN WET WELL AS REQUIRED. ENSURE THE GROUT DOES NOT CONFLICT WITH, RESTRICT OR BLOCK THE OPENINGS OF, THE SUCTION PIPES.
- SUCTION PIPE MATERIAL SHALL BE SCHEDULE 80 PVC. A SUCTION PIPE SUPPORT KIT IS TO BE INSTALLED AS SHOWN.
- MINIMUM OF 1/2-IN OF GROUT OR MASTIC SPACER ON THE TOP OF THE WET WELL LIP FOR IS REQUIRED FOR STATIONS WITH A 4" WET WELL OPENING TO AVOID CLASHES BETWEEN THE PUMP STATION HARDWARE AND THE WET WELL STRUCTURE.

ITEM	DIMENSION	LEVEL
LOW WATER ALARM	B	1'-0" [305 mm]
PUMPS OFF	C	1'-6" [457 mm]
LOW LEVEL	D	3'-6" [1067 mm]
HIGH LEVEL	E	4'-0" [1219 mm]
HIGH WATER ALARM	F	4'-6" [1372 mm]



MON VALLEY SEWAGE AUTHORITY
 OF THE BOROUGH OF DONORA AND
 THE CITY OF MONESSEN, PENNSYLVANIA
 AUBREY AVE EJECTOR STATION
 DETAILS - II



PRELIMINARY
 NOT FOR CONSTRUCTION

DATE: MAY 2026
 ISSUED FOR: BIDDING

ISSUED FOR: BIDDING
 DATE: 05/2026
 BY: C.J.J.

JOB NO.
 MVS2023-01H

SHEET

C-105

© Wade Trim, Inc.

