

CONSTRUCTION PLANS FOR  
OTSEGO LAKE DRAIN, DAM ID# 897  
OUTLET CONTROL STRUCTURE  
REMOVAL AND REPLACEMENT  
OTSEGO COUNTY, MICHIGAN



UTILITIES

THE EXISTING UTILITIES LISTED BELOW AND SHOWN ON THESE PLANS REPRESENTS THE BEST INFORMATION AVAILABLE. THIS INFORMATION DOES NOT RELIEVE THE CONTRACTOR OF THE RESPONSIBILITY TO BE SATISFIED AS TO ITS ACCURACY AND THE LOCATION OF EXISTING UTILITIES.

GENERAL NOTES

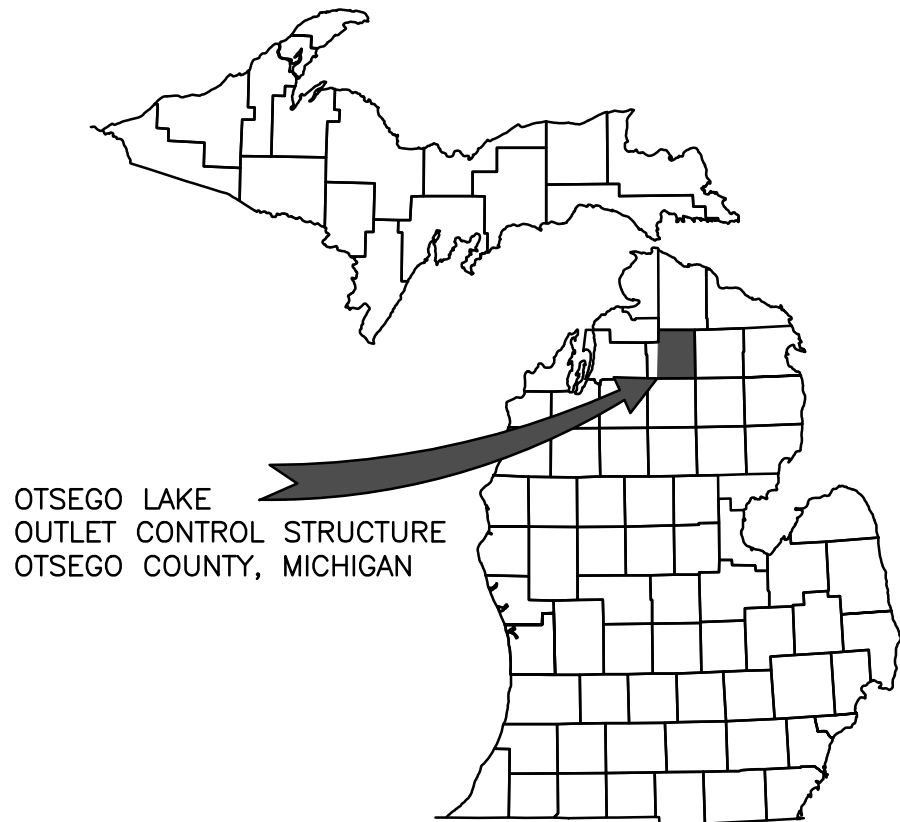
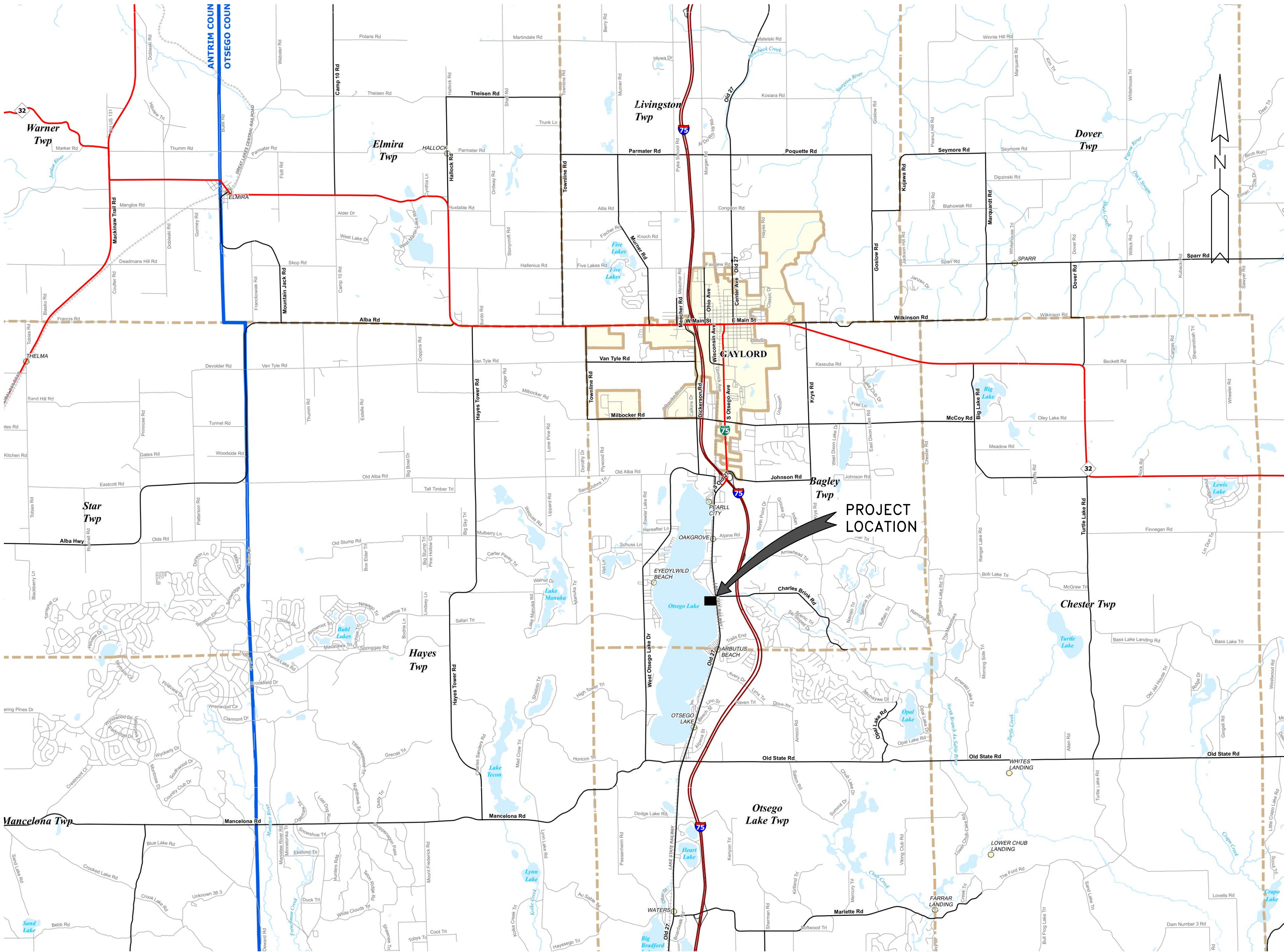
1.) EXISTING TOPOGRAPHIC MAPPING OF THE OTSEGO LAKE OUTLET CONTROL STRUCTURE WAS PREPARED BY WADE TRIM BASED ON A FIELD TOPOGRAPHIC SURVEY COMPLETED ON MAY 18, 2021.

PROJECT CONTACTS

THOMAS MARQUARD, DIRECTOR OF PLANNING/ZONING  
OTSEGO COUNTY  
225 W Main Street, Suite 203  
Gaylord, MI  
Phone: (989) 731-7515

KIRK HARRIER, MANAGING DIRECTOR  
OTSEGO COUNTY ROAD COMMISSION  
669 McCoy Road  
Gaylord, MI 49735  
Phone: (989) 732-5202

PAUL REPASKY, P.E.  
WADE TRIM, INC.  
4241 Old US 27 South, Suite 1  
Gaylord, MI 49734  
Phone: (989) 732-3584



KEY MAP  
NO SCALE

SHEET INDEX

GENERAL SHEETS	SHEET NO.
TITLE SHEET	T-1
LEGEND, CONSTRUCTION NOTES & SITE DETAILS	C-1
EXISTING CONDITIONS SITE PLAN	C-2
REMOVALS AND SESC PLAN VIEW	C-3
PROPOSED OUTLET CONTROL STRUCTURE PLAN AND PROFILE VIEWS	C-4
CONTROL STRUCTURE PLAN AND ELEVATION VIEWS	S-1
CONTROL STRUCTURE SECTIONS AND PROFILE VIEWS	S-2

APPROVALS

Thomas Marquard – Director of Planning and Zoning      DATE  
Rachel Frisch – County Administrator      DATE

PROJECT DESCRIPTION: REMOVAL OF EXISTING STANDPIPE CONTROL STRUCTURE AND PIPING, CONSTRUCTION OF NEW SINGLE BAY CONCRETE CONTROL STRUCTURE AND 48-INCH DIA. OUTLET PIPING, SOIL EROSION CONTROL MEASURES AND SITE RESTORATION, IMPROVEMENTS TO EXISTING SLUICE GATE VAULT INCLUDING SAFETY LADDER WITH LOCKING MECHANISM, ALUMINUM SAFETY RAILING, AND ACCESS HATCH.

JOB NO.  
OSG2001.02G

SHEET  
T-1



4241 Old US 27 S., Suite 1  
PO Box 618  
Gaylord, MI 49734  
989.732.3584  
www.wadetrim.com

PREPARED UNDER THE SUPERVISION OF:

PAUL M. REPASKY

6201037233  
REGISTRATION NO.

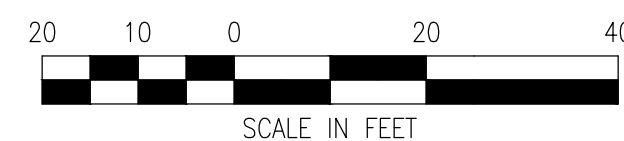


Know what's below.  
Call before you dig.









OTSEGO LAKE DAM (ID#897)  
PLAN VIEW  
SCALE: 1" = 20'



**WADE  
TRIM**



4241 Old US 27 S., Suite 1  
Gaylord, MI 49724  
989.732.3584  
[www.wadetrim.com](http://www.wadetrim.com)

ISSUED FOR:	DATE:	BY:
Prelim Review	11/08/21	PMR
Final Review	01/14/22	PMR
Permit	02/10/22	PMR
Bidding	03/10/22	PMR

SHEET

C-2



PROJECT MANAGER: PAUL M. REPASKY, PE  
C:\PW\WORK\2011\2089\CDP-PLTS-DEMOLITION PLANDWG - C-3 - PLOTTED 3/7/2025 1:21 PM BY REPASKY, PAUL



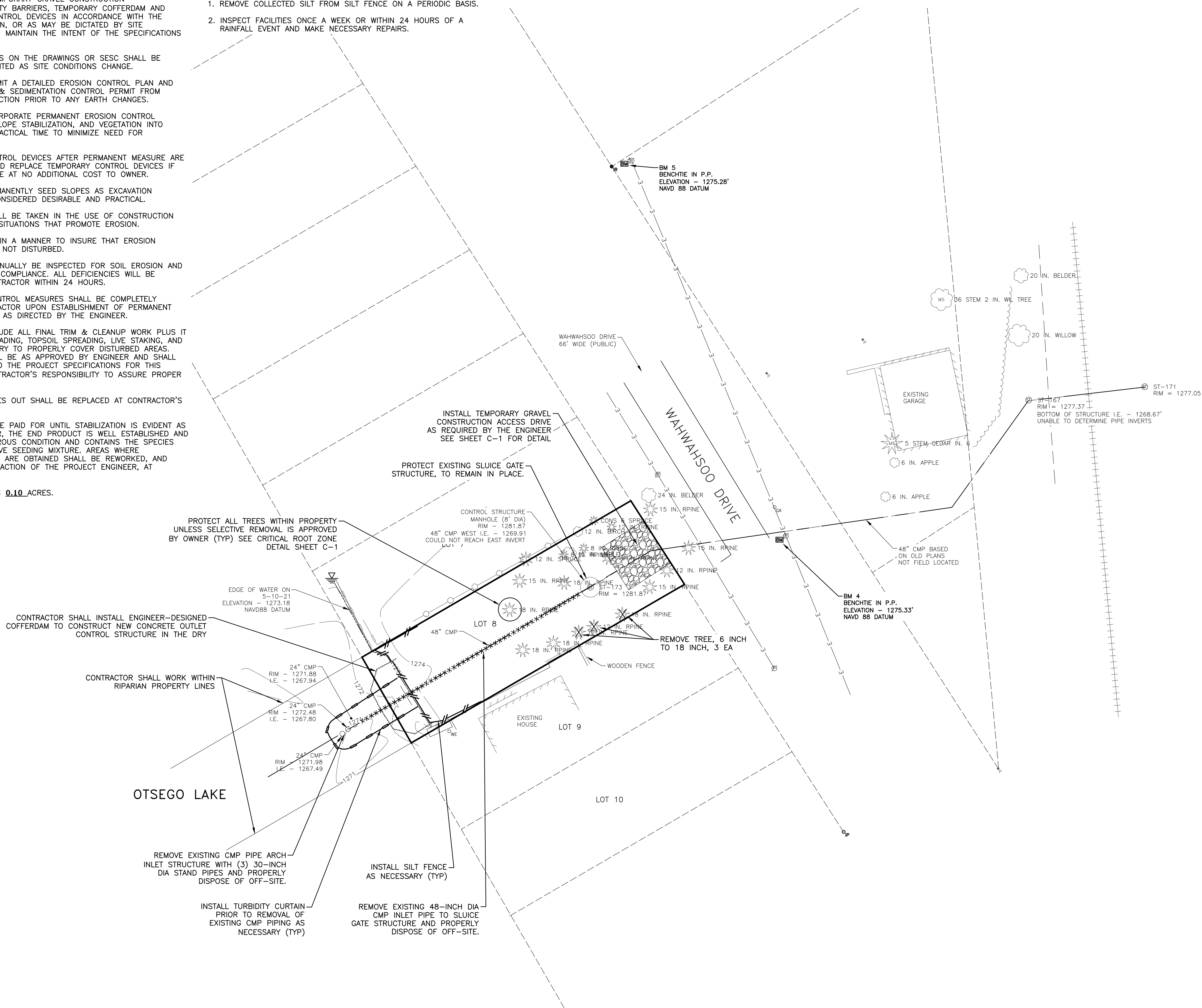
Know what's below.  
Call before you dig.

## SOIL EROSION CONTROL NOTES

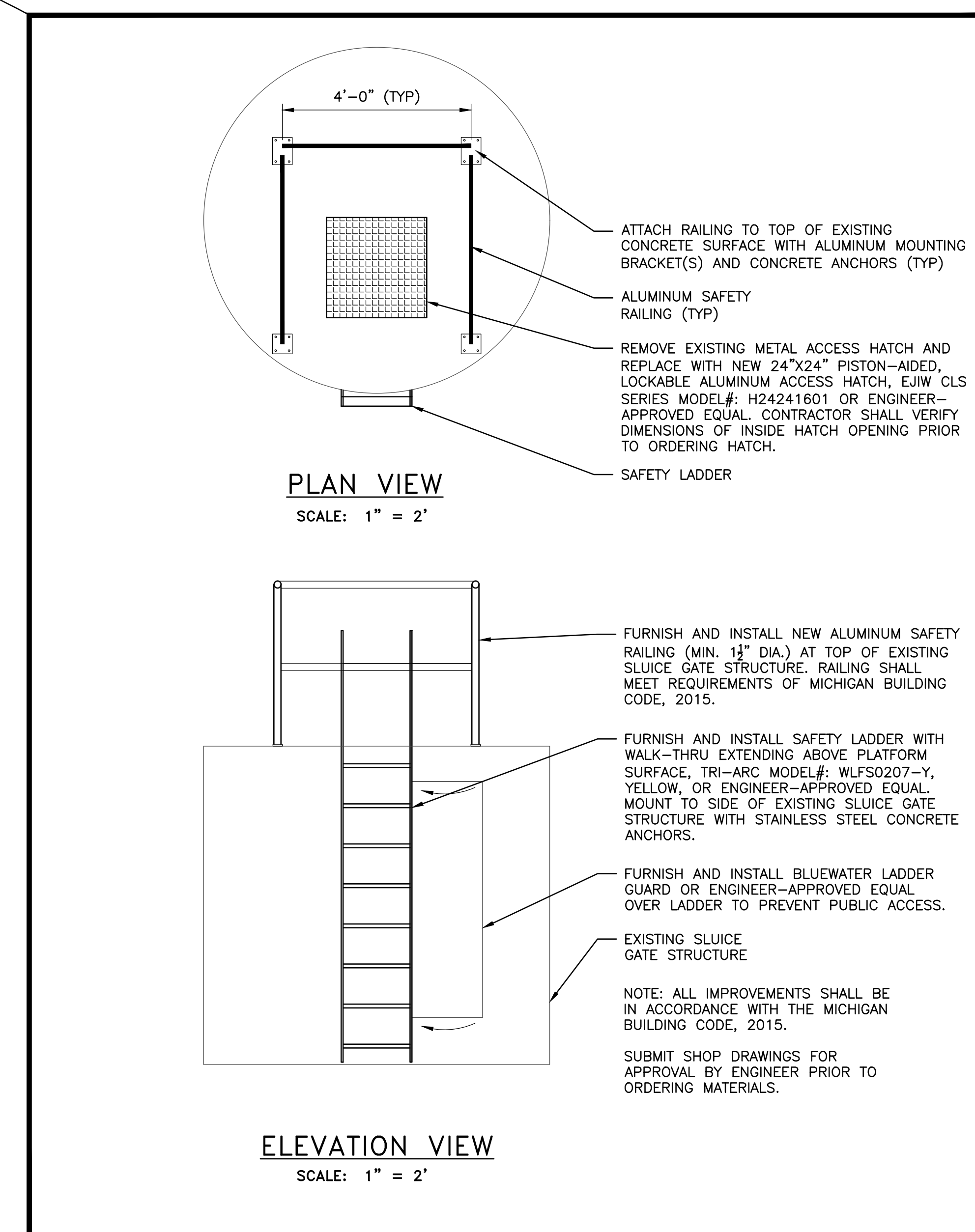
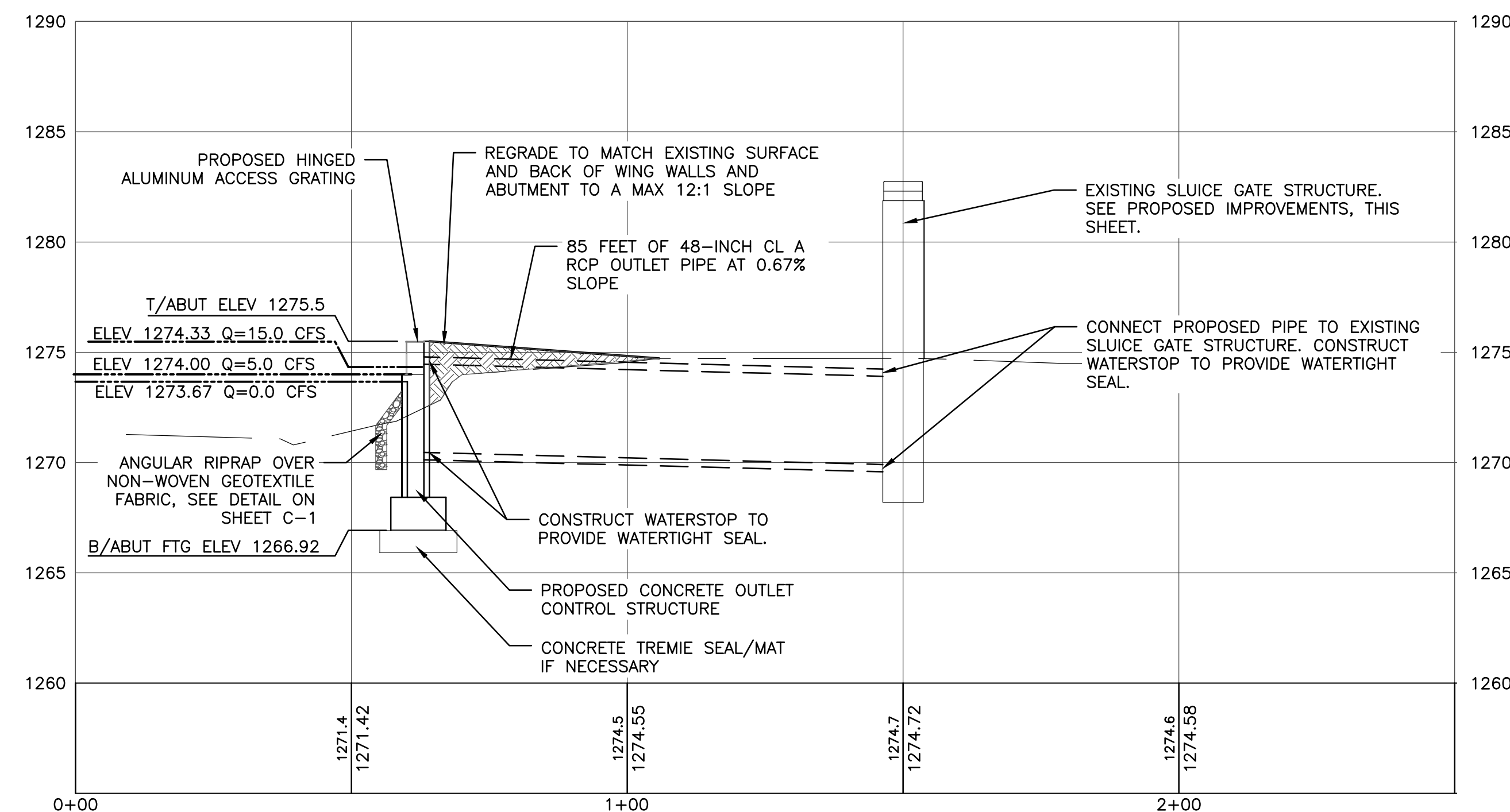
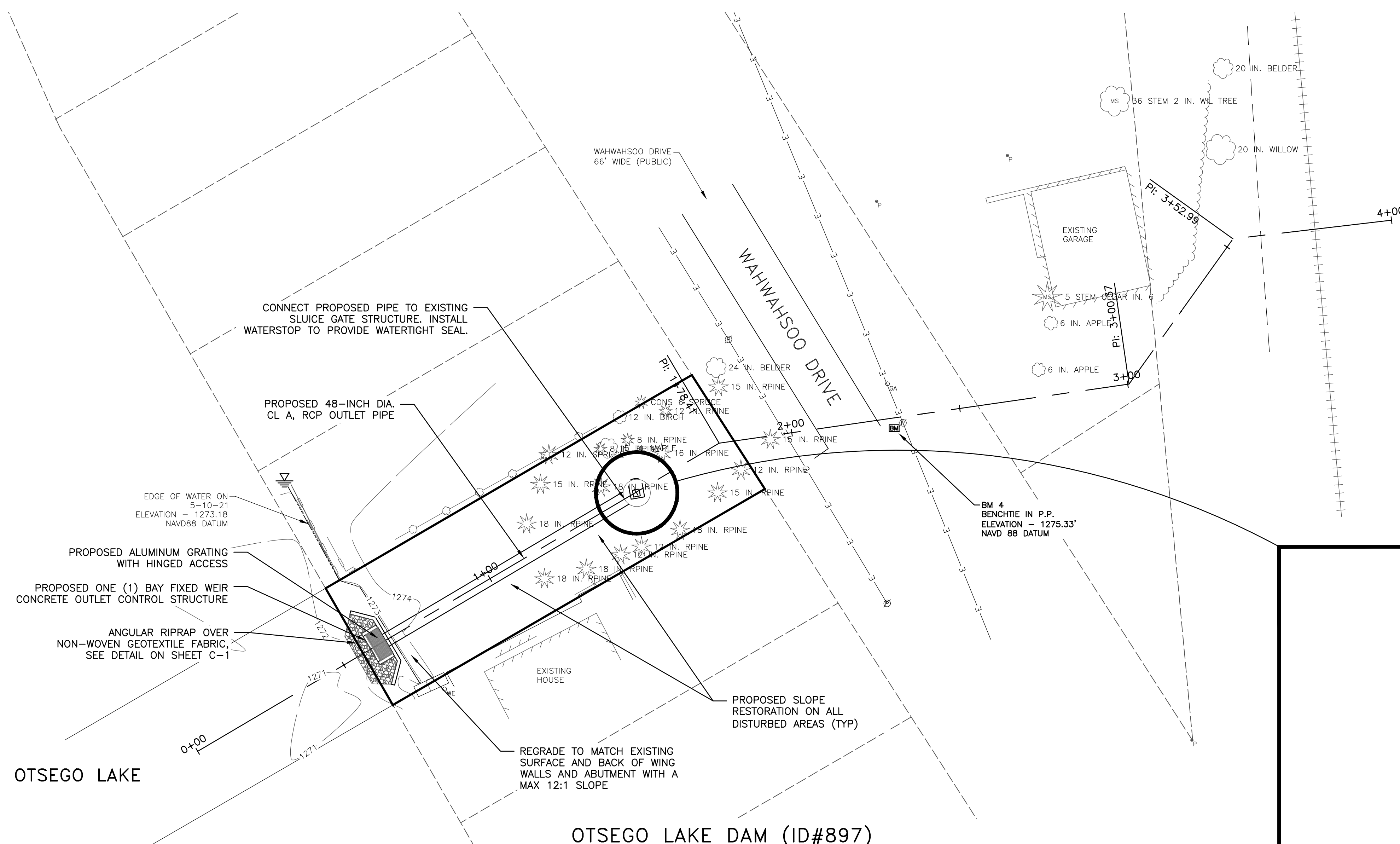
1. INSTALL SILT FENCES, TEMPORARY GRAVEL CONSTRUCTION ENTRANCE/EXITS, TURBIDITY BARRIERS, TEMPORARY COFFERDAM AND OTHER SOIL EROSION CONTROL DEVICES IN ACCORDANCE WITH THE DRAWINGS AND SESC PLAN, OR AS MAY BE DICTATED BY SITE CONDITIONS IN ORDER TO MAINTAIN THE INTENT OF THE SPECIFICATIONS AND PERMITS.
2. DEFICIENCIES OR CHANGES ON THE DRAWINGS OR SESC SHALL BE CORRECTED OR IMPLEMENTED AS SITE CONDITIONS CHANGE.
3. CONTRACTOR SHALL SUBMIT A DETAILED EROSION CONTROL PLAN AND OBTAIN A SOIL EROSION & SEDIMENTATION CONTROL PERMIT FROM AGENCY HAVING JURISDICTION PRIOR TO ANY EARTH CHANGES.
4. CONTRACTOR SHALL INCORPORATE PERMANENT EROSION CONTROL FEATURES, PERMANENT SLOPE STABILIZATION, AND VEGETATION INTO PROJECT AT EARLIEST PRACTICAL TIME TO MINIMIZE NEED FOR TEMPORARY CONTROLS.
5. REMOVE TEMPORARY CONTROL DEVICES AFTER PERMANENT MEASURE ARE ESTABLISHED. REMOVE AND REPLACE TEMPORARY CONTROL DEVICES IF THEY BECOME INEFFECTIVE AT NO ADDITIONAL COST TO OWNER.
6. CONTRACTOR SHALL PERMANENTLY SEED SLOPES AS EXCAVATION PROCEEDS TO EXTENT CONSIDERED DESIRABLE AND PRACTICAL.
7. SPECIAL PRECAUTIONS WILL BE TAKEN IN THE USE OF CONSTRUCTION EQUIPMENT TO PREVENT SITUATIONS THAT PROMOTE EROSION.
8. CLEANUP WILL BE DONE IN A MANNER TO INSURE THAT EROSION CONTROL MEASURES ARE NOT DISTURBED.
9. THE PROJECT WILL CONTINUALLY BE INSPECTED FOR SOIL EROSION AND SEDIMENTATION CONTROL COMPLIANCE. ALL DEFICIENCIES WILL BE CORRECTED BY THE CONTRACTOR WITHIN 24 HOURS.
10. TEMPORARY EROSION CONTROL MEASURES SHALL BE COMPLETELY REMOVED BY THE CONTRACTOR UPON ESTABLISHMENT OF PERMANENT CONTROL MEASURES AND AS DIRECTED BY THE ENGINEER.
11. RESTORATION SHALL INCLUDE ALL FINAL TRIM & CLEANUP WORK PLUS IT SHALL INCLUDE FINAL GRADING, TOPSOIL SPREADING, LIVE STAKING, AND NATIVE SEEDING NECESSARY TO PROPERLY COVER DISTURBED AREAS. APPLICATION RATES SHALL BE AS APPROVED BY ENGINEER AND SHALL REASONABLY CONFORM TO THE PROJECT SPECIFICATIONS FOR THIS WORK. IT SHALL BE CONTRACTOR'S RESPONSIBILITY TO ASSURE PROPER GROWTH AND COVERAGE.
12. RESTORATION THAT WASHES OUT SHALL BE REPLACED AT CONTRACTOR'S EXPENSE.
13. RESTORATION WILL NOT BE PAID FOR UNTIL STABILIZATION IS EVIDENT AS DETERMINED BY ENGINEER, THE END PRODUCT IS WELL ESTABLISHED AND IN A GROWING AND VIGOROUS CONDITION AND CONTAINS THE SPECIES CALLED FOR IN THE NATIVE SEEDING MIXTURE. AREAS WHERE UNSATISFACTORY RESULTS ARE OBTAINED SHALL BE REWORKED, AND RESEED TO THE SATISFACTION OF THE PROJECT ENGINEER, AT CONTRACTOR'S EXPENSE.
14. AREA OF DISTURBANCE IS 0.10 ACRES.

## SOIL EROSION CONTROL MAINTENANCE

1. REMOVE COLLECTED SILT FROM SILT FENCE ON A PERIODIC BASIS.
2. INSPECT FACILITIES ONCE A WEEK OR WITHIN 24 HOURS OF A RAINFALL EVENT AND MAKE NECESSARY REPAIRS.







Know what's **below**.  
**Call** before you dig

ELEVATION VIEW  
SCALE: 1/2" = 1'-0"

ABBREVIATIONS:

IF = INSIDE FACE  
OF = OUTSIDE FACE  
VEF = VERTICAL EACH FACE  
T&B = TOP & BOTTOM  
DWL = DOWEL  
CTS = CENTER TO CENTER  
FTG = FOOTING  
EA = EACH

NOTES:

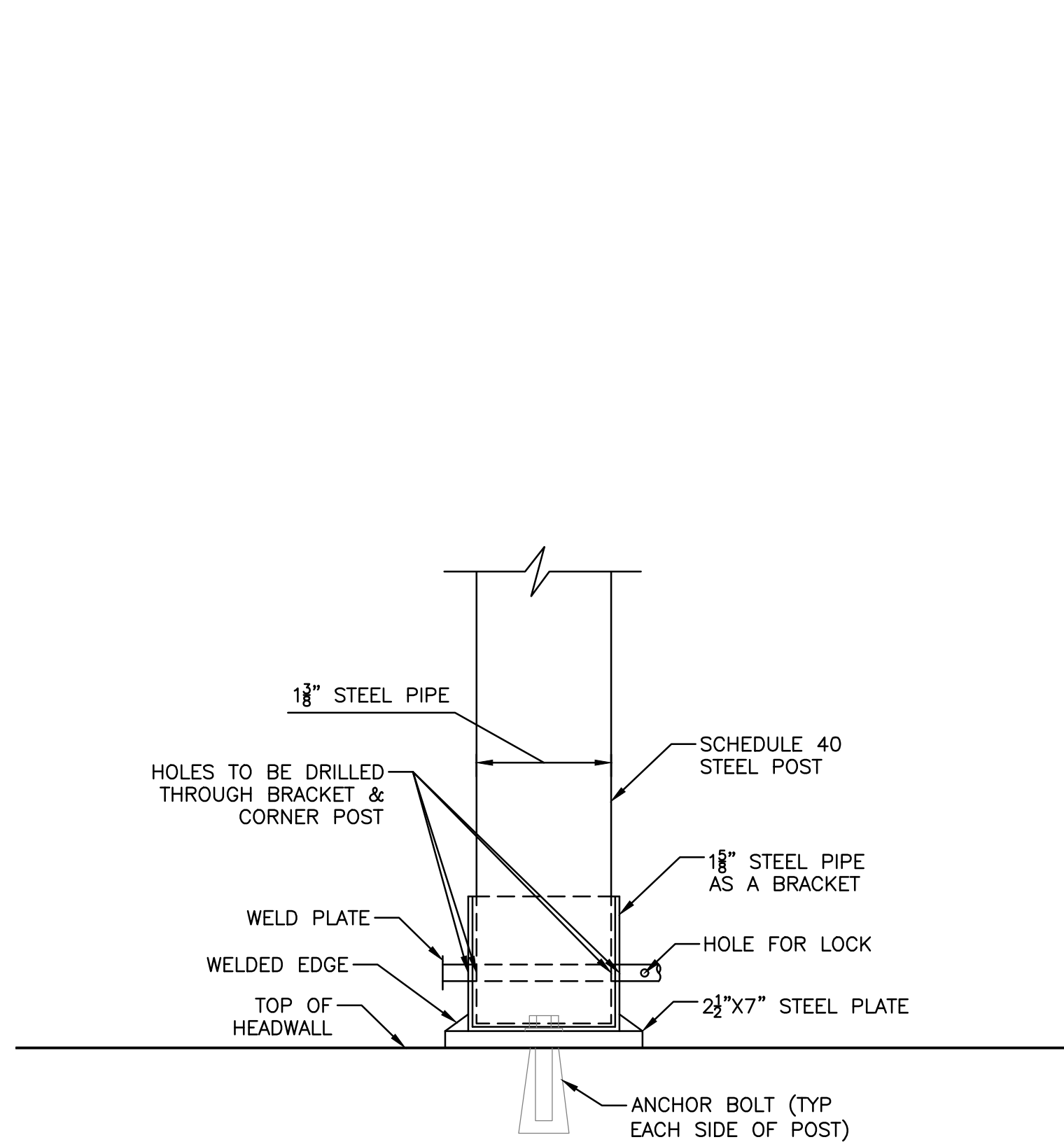
1. PROVIDE 2" x  $\frac{3}{16}$ " WELDED ALUMINUM GRATING AS MAIN FLOORING. PROVIDE WHOLE ALUMINUM GRATING OR AMICO A GIBRALTAR INDUSTRIES, OR ENGINEER-APPROVED EQUAL. ALL CUT ENDS SHALL BE Banded.
2. CONTRACTOR SHALL PROVIDE SHOP DRAWINGS FOR FRAMES, GRATINGS, HINGES, BEAMS, SUPPORTS, AND MISCELLANEOUS METAL CONNECTIONS FOR FABRICATION. ALL MATERIALS MUST BE ALUMINUM OR COMPATIBLE WITH ALUMINUM. DRAWINGS AND CALCULATIONS SHALL BE SEALED AND SIGNED BY A PROFESSIONAL ENGINEER LICENSED IN THE STATE OF MICHIGAN. THESE SHALL BE APPROVED BY THE ENGINEER PRIOR TO FABRICATION.
3. THE DESIGN OF THE STRUCTURAL MEMBERS IS BASED ON MATERIAL OF THE FOLLOWING GRADES AND STRESSES:  

CONCRETE	$f'_c = 3,500$ PSI
STEEL REINFORCEMENT	$f_y = 60,000$ PSI
4. ANY ALTERNATIVE REMOVABLE FENCE DESIGNS SHALL BE SUBMITTED FOR APPROVAL TO THE ENGINEER PRIOR TO FABRICATION.
5. REMOVABLE COMPONENTS OF CHAIN LINK FENCE SHALL BE INCLUDED IN THE PAY ITEM "Chain Link Fence with Gate"
6. ALL STEEL REINFORCEMENT SHALL BE EPOXY COATED.

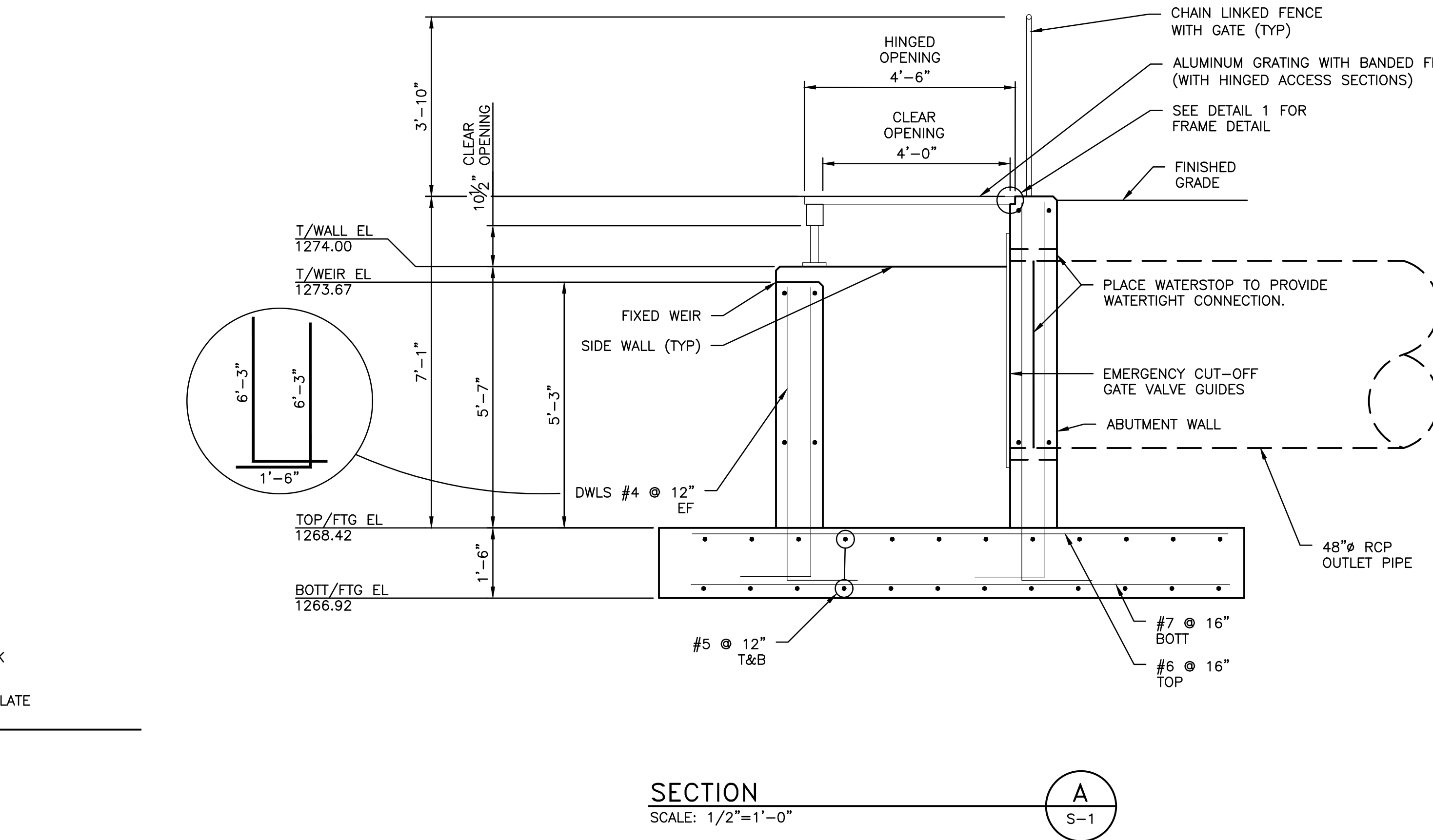




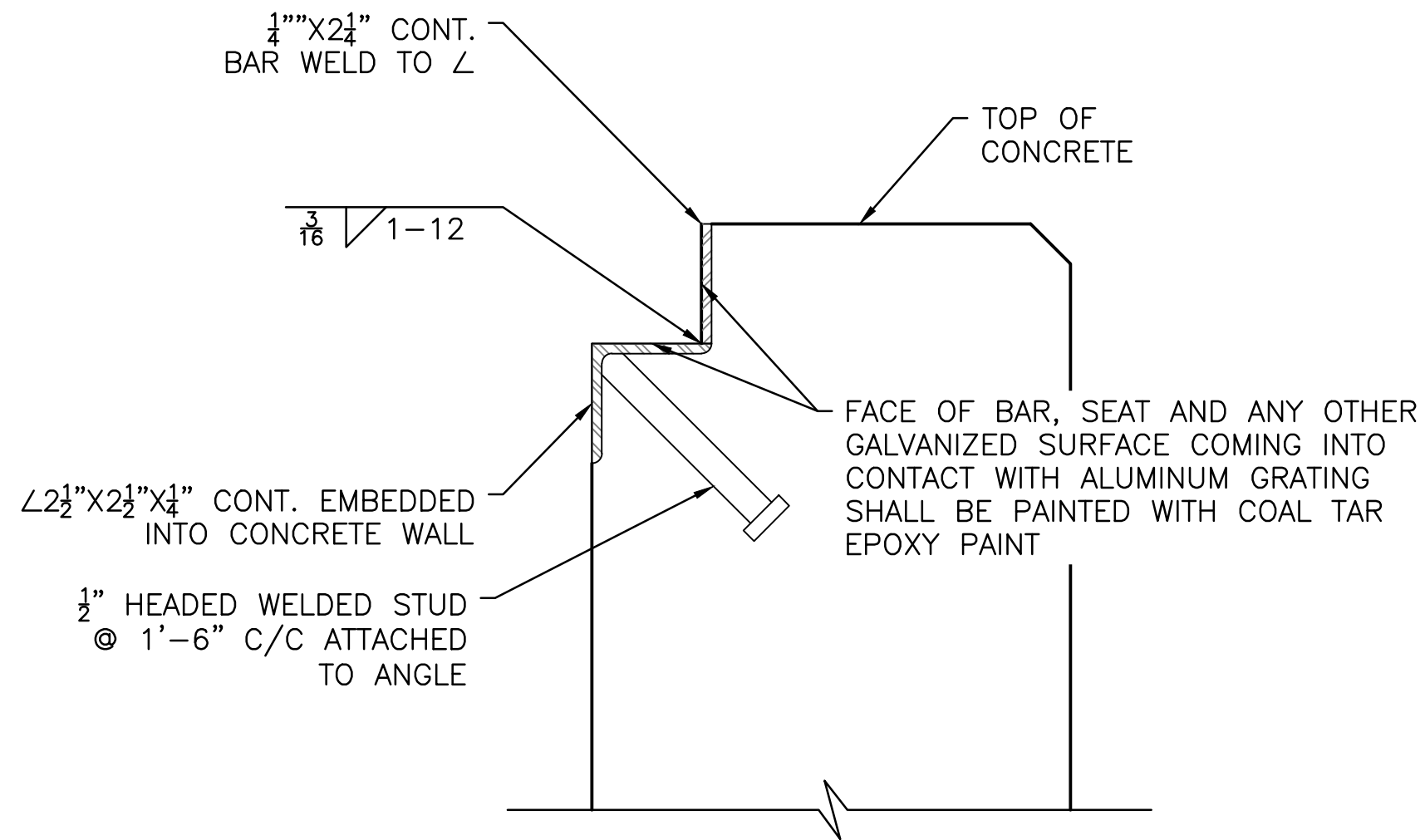
Know what's below.  
Call before you dig.



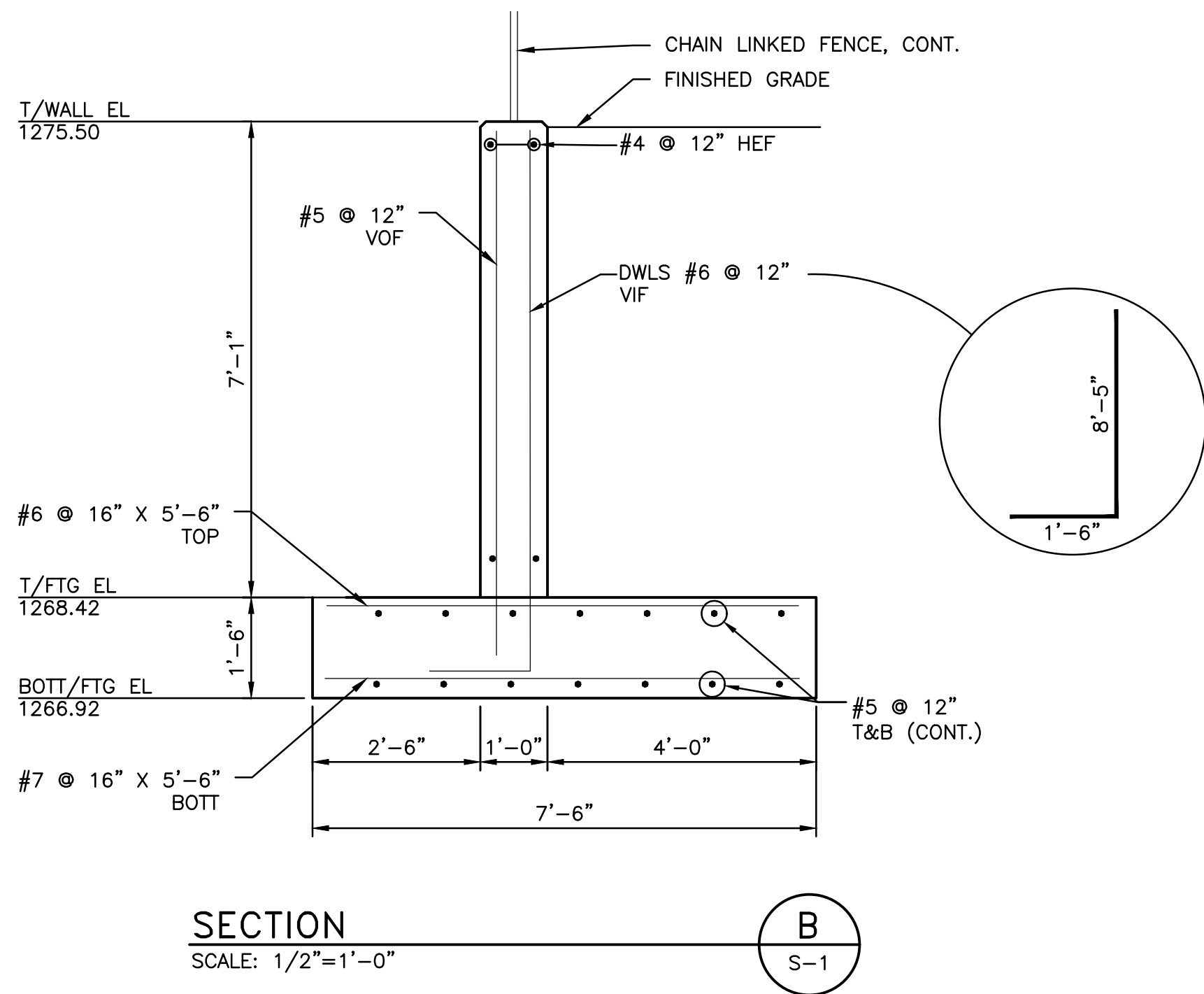
REMOVABLE FENCE  
POST DETAIL  
SCALE: NTS



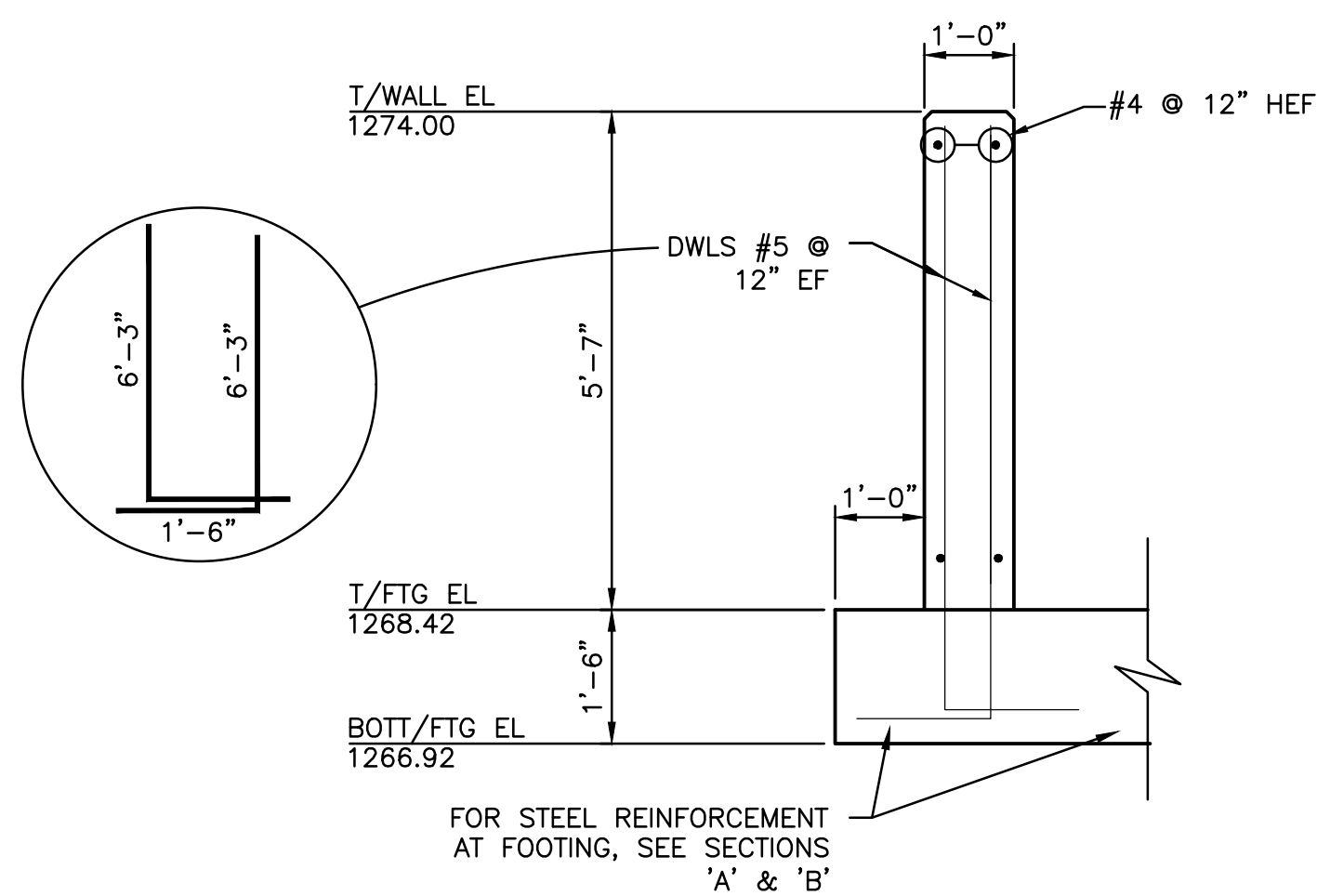
SECTION  
SCALE: 1/2"=1'-0"  
A  
S-1



DETAIL 1  
SCALE: NTS



SECTION  
SCALE: 1/2"=1'-0"  
B  
S-1



SECTION  
SCALE: 1/2"=1'-0"  
C  
S-1

NOTES:

1. PROVIDE 2 1/2" x 3/8" WELDED ALUMINUM GRATING AS MANUFACTURED BY MCNICHOLS ALUMINUM GRATING OR AMICO A GIBRALTAR INDUSTRIES, OR ENGINEER-APPROVED EQUAL. ALL CUT ENDS SHALL BE Banded.
2. CONTRACTOR SHALL PROVIDE SHOP DRAWINGS FOR FRAMES, GRATINGS, HINGES, BEAMS, SUPPORTS, AND MISCELLANEOUS METAL CONNECTIONS FOR FABRICATION. ALL MATERIALS MUST BE ALUMINUM OR COMPATIBLE WITH ALUMINUM. DRAWINGS AND CALCULATIONS SHALL BE SEALED AND SIGNED BY A PROFESSIONAL ENGINEER LICENSED IN THE STATE OF MICHIGAN. THESE SHALL BE APPROVED BY THE ENGINEER PRIOR TO FABRICATION.
3. THE DESIGN OF THE STRUCTURAL MEMBERS IS BASED ON MATERIAL OF THE FOLLOWING GRADES AND STRESSES:  
CONCRETE  $f'_c = 3,500$  PSI  
STEEL REINFORCEMENT  $f_y = 60,000$  PSI
4. ANY ALTERNATIVE REMOVABLE FENCE DESIGNS SHALL BE SUBMITTED FOR APPROVAL TO THE ENGINEER PRIOR TO FABRICATION.
5. REMOVABLE COMPONENTS OF CHAIN LINK FENCE SHALL BE INCLUDED IN THE PAY ITEM "Chain Link Fence with Gate"
6. ALL STEEL REINFORCEMENT SHALL BE EPOXY COATED.

OTSEGO COUNTY  
GAYLORD, MICHIGAN 49735  
OTSEGO LAKE DRAIN, DAM ID# 897  
OUTLET CONTROL STRUCTURE REMOVAL AND REPLACEMENT  
SECTIONS AND PROFILE VIEWS

ISSUED FOR:	DATE:	BY:
Prelim Review	11/08/21	PMR
Final Review	01/14/22	PMR
Permit	02/10/22	PMR
Bidding	03/10/22	PMR
JOB NO.	OSG2001.02G	
SHEET	S-2	



4241 OLUS 27 S, Suite 1  
Gaylord, MI 49734  
989.732.3554  
www.wadetrims.com