

**SECTION 00 91 13**  
**ADDENDUM # 1**

To all prospective bidders and others concerned, YOU ARE HEREBY ADVISED THAT the Contract Documents for the above referenced Project are revised in the following particulars:

Specification Section	Description of Change
002113 – Not Reissued	Section 1.04 Pre-Bid Conference is deleted (NO PRE-BID MEETING)
004243 – Reissued	Added the price of \$10,000 for the sprinkler allowance
004243 – Reissued	Added provisional quantity of 1000 SY for 1.5-Inch Mill
004243 - Reissued	Changed the quantity of Restoration to 1000 SY to be used at various locations throughout the project.
004243 – Reissued	Added pay item number 42A Temporary Lowering of Drainage Structure
004243 - Reissued	Updated Quantity for item 54 and item 57
004243 – Reissued	Added pay item number 57A Hand Patching
004243 - Reissued	Removed the lump sum quantity from item 59 and 77. Added pay items and quantities for pavement markings. Item numbers added are 59, 59A, 59B, 59C, 59D, 59E, 59F, 59G, 59H, 59I, 59J, 59K, 59L, 59M, 59N, 77, 77A, 77B, 77C, 77D, 77E, 77F, 77G, 77H
004243 - Reissued	Added pay item number 72A Temporary Lowering of Drainage Structure for Bid Alternate 1
012200 – Reissued	Added Description for item 42A Temporary Lowering of Drainage Structure
012200 – Reissued	Added description for item 57A Hand Patching
012200 - Reissued	Added Description for item 57A Temporary Lowering of Drainage Structure for Bid Alternate 1
012200 - Reissued	Added descriptions for items 59, 59A, 59B, 59C, 59D, 59E, 59F, 59G, 59H, 59I, 59J, 59K, 59L, 59M, 59N, 77, 77A, 77B, 77C, 77D, 77E, 77F, 77G, 77H
Plan Sheet	Description of Change
12	Added quantities for pavement markings. Changed the pavement cross section. Updated the HMA application estimate. Updated the quantity for aggregate base and bituminous leveling course.
20	Added quantities for pavement markings
28	Changed Cold Milling pay item to 2-Inch
29	Changed Cold Milling pay item to 2-Inch
30	Changed Cold Milling pay item to 2-Inch
35	Added quantities for pavement markings
36	Added quantities for pavement markings

37	Added quantities for pavement markings
43	Added quantities for pavement markings

This Addendum is hereby incorporated into the original Contract Documents for the bidding referred to above and is considered as binding as though originally appearing therein. Receipt of this Addendum must be noted in the place provided in Section 00 42 43 - Proposal, dated April 18, 2024

**SECTION 00 42 43  
PROPOSAL**

Owner: City of Plymouth

Project: 2024 Infrastructure Program

Project Location: 201 S. Main Street

**BIDDER INFORMATION**

Bidder Name: \_\_\_\_\_

By (Printed Name): \_\_\_\_\_

Signature: \_\_\_\_\_

Address: \_\_\_\_\_

Phone No: \_\_\_\_\_

Email: \_\_\_\_\_

The Bidder proposes and agrees, if their Bid is accepted, to enter into an Agreement with the City of Plymouth in the form included in the Contract Documents to complete all Work as specified or indicated in the Contract Documents for the Contract Price and within the Contract Time indicated in the Agreement, and in accordance with the Contract Documents.

In submitting their Bid, Bidder represents, as more fully set forth in the Agreement, that:

1. Bidder has examined copies of all Contract Documents, (consisting of Plans dated Ready for Bidders date and Project Manual dated Ready for Bidders date) which Bidder understands and accepts as sufficient for the purpose, including any and all Addenda officially issued, the receipt of which has been acknowledged.
  - A. Addendum \_\_\_\_\_ Acknowledged by: \_\_\_\_\_ Date: \_\_\_\_\_
  - B. Addendum \_\_\_\_\_ Acknowledged by: \_\_\_\_\_ Date: \_\_\_\_\_
  - C. Addendum \_\_\_\_\_ Acknowledged by: \_\_\_\_\_ Date: \_\_\_\_\_
2. Bidder has examined the surface and subsurface conditions where the Work is to be performed, the legal requirements and local conditions affecting cost, progress, furnishing or performance of the Work, and has made such independent investigations as Bidder deems necessary.
3. Their Bid is genuine and not made in the interest of or on behalf of any undisclosed person, firm or corporation and is not submitted in conformity with any Agreement or rules of any group, association, organization or corporation; Bidder has not directly or indirectly induced or solicited any other Bidder to submit a false or sham Bid; Bidder has not solicited or induced any person, firm or a corporation to refrain from bidding; and Bidder has not sought by collusion to obtain for himself any advantage over any other Bidder or over the Owner.
4. The Bidder agrees to complete the Work, in accordance with the Contract Documents, for the following Contract Price:

No.	Description	Est. Quantity	Unit	Bid Unit Price	Bid Price
A. GENERAL					
1	Mobilization, Max. 5%	1	LS	\$	\$
2	Traffic Maintenance And Control	1	LS	\$	\$
3	Audio/Video Route Survey	1	LS	\$	\$
4	Minor Traffic Devices	1	LS	\$	\$
5	Inspector Days		DAY	\$850.00	\$
6	Sign, Type B, Temp, Prismatic, Special, Furn	78	SF	\$	\$
7	Sign, Type B, Temp, Prismatic, Special, Oper	78	SF	\$	\$
8	Barricade, Type III, High Intensity, Lighted, Furn	8	EA	\$	\$
9	Barricade, Type III, High Intensity, Lighted, Oper	8	EA	\$	\$
10	Plastic Drum	100	EA	\$	\$
GENERAL SUBTOTAL				\$	
B. DEMO AND SESC					
11	Pavement Excavation	1300	CY	\$	\$
12	Remove Concrete Curb and Gutter	2400	LF	\$	\$
13	Concrete Pavement, Remove	425	SY	\$	\$
14	HMA Pavement, Remove	625	SY	\$	\$
15	Drainage Structure, Remove	5	EA	\$	\$
16	Cold Milling Bituminous Pavement, 1.5 inch	1000	SY	\$	\$
17	Cold Milling Bituminous Pavement, 2 inch	14500	SY	\$	\$
18	Pavement for Butt Joint Remove	450	SY	\$	\$
19	Concrete Drives and Sidewalks, Remove	4500	SF	\$	\$
20	Storm Sewer, Remove	62	LF	\$	\$

21	Gate Valve and Well, Remove	17	EA	\$	\$
22	Fire Hydrant, Rem	2	EA	\$	\$
23	Inlet Filter	76	EA	\$	\$
SESC AND DEMO SUBTOTAL				\$	
C. WATER MAIN					
24	Water Main, 8-inch, D.I., Trench "B"	526	LF	\$	\$
25	Water Main, Abandon with Flowable Fill	15	CY	\$	\$
26	Gate Valve and Well, 8-inch	17	EA	\$	\$
27	Connect Exist. Water Main w/ MJ Solid Sleeve	3	EA	\$	\$
28	Connect Exist. 8" Water Main	0	EA	\$	\$
29	Connect Existing GV&W	0	EA	\$	\$
30	Water Service, 1-inch, Type K Copper, Long	3	EA	\$	\$
31	Water Service, 1-inch, Type K Copper, Short	2	EA	\$	\$
32	Water Service, HDPE, 1-inch, Long	8	EA	\$	\$
33	Water Service, HDPE, 1.5-inch, Long	1	EA	\$	\$
34	Water Service, HDPE, 2-inch, Long	1	EA	\$	\$
35	8" X 6" Reducer	16	EA	\$	\$
36	8" X 8" X 8" Tee	3	EA	\$	\$
37	Fire Hydrant Assembly	1	EA	\$	\$
38	Curb Stop and Box, 1-Inch	13	EA	\$	\$
39	Curb Stop and Box, 1.5-Inch	1	EA	\$	\$
40	Curb Stop and Box, 2-Inch	1	EA	\$	\$
WATER MAIN SUBTOTAL				\$	

D. STORM					
41	Remove CB Cover and Replace with Manhole Cover	1	EA	\$	\$
42	Adjust Structure	68	EA	\$	\$
42A	Temporary Lowering Of Drainage Structures	68	EA	\$	\$
43	Reconstruct Structure	136	VF	\$	\$
44	Remove and Replace Frame and Cover	23,595	LB	\$	\$
45	Connect to Existing Storm Structure	2	EA	\$	\$
46	12-Inch Storm Sewer, C-76. CI IV RCP, Trench B	240	LF	\$	\$
47	Standard Storm Inlet	3	EA	\$	\$
48	Underdrain, 6-inch W/ Geotextile Fabric Wrap	520	LF	\$	\$
49	Standard Storm Catch Basin	2	EA	\$	\$
50	Standard Storm Manhole	0	EA	\$	\$
51	Build Standard CB Over Existing Sewer	2	EA	\$	\$
52	Build Standard MH Over Existing Sewer	1	EA	\$	\$
STORM SUBTOTAL				\$	
E. PAVING AND RESTORATION					
53	Subgrade Undercut and 21AA Aggregate Backfill	200	CY	\$	\$
54	Aggregate Base Course, 21AA	1400	TON	\$	\$
55	Drive and Sidewalk, Concrete, 6-Inch	200	SF	\$	\$
56	Bituminous Pavement, Wearing Course, 1300T	1900	TON	\$	\$
57	Bituminous Pavement, Leveling Course, 3C	1000	TON	\$	\$
57A	Hand Patching	50	TON	\$	\$
58	8-Inch Plain Concrete Pavement	401	SY	\$	\$
59	Pavement Markings, Waterborn, 4-inch, Blue	700	LF	\$	\$

59A	Pavement Markings, Waterborn, 4-inch, White	1900	LF	\$	\$
59B	Pavement Markings, Waterborn, 4-inch, Yellow	3600	LF	\$	\$
59C	Pavement Markings, Waterborn, 6-inch, White	3200	LF	\$	\$
59D	Pavement Markings, Waterborn, 24-inch, Stopbar	200	LF	\$	\$
59E	Pavement Markings, Waterborn, 12-inch, Crosswalk	850	LF	\$	\$
59F	Pavement Markings, Waterborn, Handicap Symbol	6	EA	\$	\$
59G	Pavement Markings, Thermoplastic, Left Turn Arrow	3	EA	\$	\$
59H	Pavement Markings, Thermoplastic, Right Turn Arrow and Thru	1	EA	\$	\$
59I	Pavement Markings, Thermoplastic, Bike, Small Symbol	11	EA	\$	\$
59J	Pavement Markings, Thermoplastic, Directional Arrow Symbol, Bike	11	EA	\$	\$
59K	Pavement Markings, Thermoplastic, Merge Arrow	1	EA	\$	\$
59L	Pavement Markings, Thermoplastic, Merge	1	EA	\$	\$
59M	Pavement Markings, Thermoplastic, Only	1	EA	\$	\$
59N	Pavement Markings, Thermoplastic, Sharrow Symbol	3	EA	\$	\$
60	Remove and Salvage Parking Bumpers	13	EA	\$	\$
61	Concrete Collar	4	EA	\$	\$
62	Concrete Parking Bumper	12	EA	\$	\$
63	Concrete Curb, MDOT Detail E4	15	LF	\$	\$
64	Curb and Gutter, Concrete, Detail F4	2100	LF	\$	\$
65	Sidewalk, Concrete, 4-inch	4000	SF	\$	\$
66	Sidewalk Ramp, Concrete, 6-inch	1100	SF	\$	\$
67	Restoration with 3-inches Topsoil and Nursery Sod, and Mulch	1000	SY	\$	\$
68	Sprinkler Allowance	1	LS	\$ 10,000	\$ 10,000

69	Maintenance Agg	30	TON	\$	\$
PAVING AND RESTORATION SUBTOTAL				\$	

F. BID ALTERNATE 1					
70	Remove Concrete Curb and Gutter	200	LF	\$	\$
71	Cold Milling Bituminous Pavement, 2 Inch	25000	SY	\$	\$
72	Adjust Structure	100	EA	\$	\$
72A	Temporary Lowering Of Drainage Structures	100	EA	\$	\$
73	Reconstruct Structure	200	VF	\$	\$
74	Remove and Replace Frame and Cover	39200	LB	\$	\$
75	Bituminous Pavement, Wearing Course, 1300T	2800	TON	\$	\$
76	Bituminous Pavement, Leveling Course, 3C	200	TON	\$	\$
77	Pavement Markings, Waterborn, 12-inch, Yellow	60	LF	\$	\$
77A	Pavement Markings, Waterborn, 4-inch, White	1700	LF	\$	\$
77B	Pavement Markings, Waterborn, 4-inch, Yellow	1500	LF	\$	\$
77C	Pavement Markings, Waterborn, 4-inch, Blue	500	LF	\$	\$
77D	Pavement Markings, Waterborn, 24-inch, Stop bar	200	LF	\$	\$
77E	Pavement Markings, Waterborn, 12-inch, Crosswalk	650	LF	\$	\$
77F	Pavement Markings, Waterborn, Handicap Symbol	9	LF	\$	\$
77G	Pavement Markings, Thermoplastic, Left Turn Arrow	1	EA	\$	\$
77H	Pavement Markings, Thermoplastic, Right Turn Arrow and Thru	1	EA	\$	\$
78	Curb and Gutter, Concrete, Detail F4	200	LF	\$	\$
BID ALTERNATE 1 (Items 70 to 78) SUBTOTAL				\$	



**Total Base Bid (Items 1 through 69)      \$ \_\_\_\_\_**

**Total Bid Alternate 1 (Items 70 through 78) \$ \_\_\_\_\_**

5. The Bidder by submitting a Bid, thereby certifies that Bidder or a qualified designated person in Bidder's employ has examined the Contract Documents provided by the Owner for bidding purposes. Further, they certify that Bidder or Bidder's qualified employee has reviewed the Bidder's proposed construction methods and finds them compatible with the conditions which Bidder anticipates from the information provided for Bidding.
6. The Bidder by submitting a Bid agrees to complete the Work under any job circumstances or field conditions present and/or ascertainable prior to bidding. In addition, Bidder agrees to complete the Work under whatever conditions Bidder may create by Bidder's own sequence of construction, construction methods, or other conditions he may create, at no additional cost to the Owner.
7. The Bidder by submitting a Bid, declares that Bidder has familiarized them self with the location of the proposed Work and the conditions under which it must be constructed. Also, Bidder has carefully examined the Plans, the Specifications, and the Contract Documents, which Bidder understands and accepts as sufficient for the purpose, and agrees that Bidder will Contract with the Owner to furnish all labor, material, tools, and equipment necessary to do all Work specified and prescribed for the completion of the Project.
8. The Bidder will provide a bid bond, in the amount of at least **five (5)** percent of the amount Bid, drawn payable to City of Plymouth as security for the proper execution of the Agreement.
9. The Bidder by submitting a Bid agrees that if awarded Contract, to sign the Agreement and submit satisfactory bonds and certificates of insurance coverage and other evidence of insurance required by the Contract Documents within 15 days after the date of Owner's Notice of Award.
10. The Bidder by submitting a Bid agrees that time is of the essence and, if awarded Contract, that the Work will be Completed on or before the dates/days as specified in the Agreement.
11. Liquidated damages, as specified in the General Conditions, Supplementary Conditions and Agreement, shall also apply to the Substantial Completion date.
12. Engineering and inspection costs incurred after the final completion date shall be paid by the Contractor to the Owner as specified in the Conditions of the Contract and Agreement.
13. Proposals may not be withdrawn for a period of 60 days after bid opening.
14. The following documents are made a condition of this Proposal:
  - A. Required Bid Security
  - B. Legal Status of Bidder
  - C. Non-Collusion Affidavit

**SECTION 01 22 00  
UNIT PRICES**

**PART 1 GENERAL**

**1.01 SCOPE OF WORK**

- A. This Section describes the method of measurement and basis of payment for items of Work included in the Contract and specified in the Proposal. Contractor shall provide labor, material, tools, equipment and services required to complete the Work specified herein and indicated on the Plans.
- B. Owner will make no allowances for items not included in Section 00 42 43 - Proposal.

**1.02 ITEMS OF THE PROPOSAL**

Item 1

**Mobilization** will be paid for at the Contract Unit Price on a Lump Sum basis. Price paid shall be payment in full for labor, material, and equipment necessary for preparatory work and operations, including, but not limited to, those necessary for the movement of personnel, equipment, supplies, and incidentals to the project site; for the establishment of Contractor's, Engineer's, and Owner's field offices, and other facilities necessary to undertake the work on the project; and for other work and operations which must be performed, or for expenses incurred, prior to beginning work on the various contract items on the project site. It shall also include preconstruction costs, including insurance and bonds, exclusive of bidding costs, which are necessary direct costs to the project and are of a general nature rather than directly attributable to other pay items under the contract. Payment for mobilization will be based upon the following schedule:

<b>Partial Payment Schedule</b>	
Percentage of Original Contract Amount Earned	Percentage of Bid Price for Mobilization Allowed
5	50
10	75
25	100

Item 2

**Traffic Maintenance and Control** will be paid for at the Contract Unit Price on a Lump Sum basis. Price paid shall be payment in full for labor, material, and equipment required for maintaining traffic, and shall include, but is not limited to, furnishing, installing, operating, and maintaining barricades, lighted arrow boards, drums, traffic control devices, signs, channeling devices, cones, flagmen, flag control, pavement markings, warning flashers, concrete barriers, minor traffic devices, and other items necessary to complete the job, whether specifically mentioned or implied.

Item 3

**Audio-Video Route Survey** will be paid for at the Contract Unit Price on a Lump Sum basis. Price paid shall be payment in full for labor, material, equipment, and supplies necessary for furnishing an audio-video route survey in accordance with Section 01 33 00 - Submittal Procedures and Section 01 11 00 - Summary of Work.

Item 4

**Minor Traffic Devices and Flag Control** will be paid for at the Contract Unit Price on a Lump Sum basis. Price paid shall be payment in full for labor, material and equipment necessary for furnishing and installing minor traffic devices and flag control, and shall include, but is not limited to, portable signs, paddles, cones, channeling devices, flagmen,

removing and replacing damaged devices, installing and removing temporary pavement markings, and other items necessary to complete the Work, whether specifically mentioned or implied.

Item 5

**Inspector Days** will be paid for at the Contract unit price per Day as specified in the Proposal. Measurement for Inspector Days will be as follows:

- a. An Inspector Day shall be construed to mean any day when an operation by the Contractor's work crew (as determined by the Engineer), such as but not limited to construction of the project, restoration, cleanup and Project follow-up; will require the presence of a Resident Project Representative. An Inspector Day shall also include any time when the presence of a Resident Project Representative is required to determine the status of completion of items identified on the project punch list, involvement with project complaints or other items related to closeout of the construction contract.
- b. An Inspector Day shall be computed by adding the total actual hours that each Resident Project Representative spent on the Project and dividing such total number of hours by eight (8) provided that the minimum show-up time when a Work crew elects to not Work shall be four (4) hours. Show-up time will not be included when 12 hours notice of intent to not Work has been given by the Contractor to the Engineer. Cost of Inspector Days will be deducted from the monthly payments to the Contractor and paid to Engineer by the Owner. Should the credited amount (number of days indicated by the Contractor in the Proposal) become depleted, the cost of Inspector Days will be deducted from the monthly payments to the Contractor. Upon completion of the Project, any surplus remaining in the Inspector Day bid item will be given to the Contractor.

Item 6, 7

**Temporary sign** will be paid for at the Contract Unit Price per square foot. Price paid shall be payment in full for furnishing and installing temporary signs, and shall include, but is not limited to, furnishing and installing signs and posts, replacing damaged signs, removing signs at completion of project, and all other items necessary to complete the Work, whether specifically mentioned or implied.

Item 8, 9, 10

**Traffic maintenance and control devices** will be paid for at the Contract Unit Price per each. Price paid shall be payment in full for all labor, material, and equipment required for furnishing, installing, operating, and maintaining traffic control devices, and shall include, but is not limited to, all barricades, drums, warning flashers, repositioning devices, removing and replacing damaged devices, maintaining lights and flashers, and all other items necessary to complete the job, whether specifically mentioned or implied.

Item 11

**Pavement Excavation** will be paid for at the Contract Unit Price per Cubic Yard (CYD). Price paid shall be payment in full for labor, material, and equipment necessary for pavement excavation to the lines and grades shown on the plans, and shall include, but is not limited to, stripping and stockpiling topsoil, excavation and disposal of unsuitable material including but not limited to asphalt pavement, deep strength asphalt, asphalt approaches and asphalt drives, aggregate surfaces, sidewalks, concrete end headers, concrete pavement, concrete curbs, concrete approaches and concrete drives, stumps, trees, rocks, earth, large stones, culverts, abandoned utilities, sewers or structures, protecting existing improvements, filling holes and voids with compacted granular backfill, the excavation and disposal of other items exposed in excavating to the subgrade, fine

grading and compacting subgrade, sawcutting, barricading, and for other items necessary to complete the work, whether specifically mentioned or implied.

Measurement for pavement excavation will be determined by one of the following methods:

- a. For full width pavement: By a neat rectangle, the width equal to the proposed pavement plus two (2) feet on each side, and the height of the rectangle determined by the difference in elevation, from the elevation of the existing right-of-way centerline down to the average subgrade elevation or the average bottom of the proposed pavement, whichever is lower. The average subgrade or bottom of pavement elevation being determined by averaging the elevation of each as measured at the back of curbs or edges of pavement and the centerline of the pavement.
- b. For pavement widening: By a neat rectangle, the width equal to the proposed pavement widening plus two (2) feet, and the height of the rectangle determined by the difference in elevation from the surface or gutter of the existing pavement down to the subgrade elevation or the bottom of the proposed pavement, whichever is lower. The average subgrade or bottom of pavement elevation being determined by averaging the elevation of each, as measured at the back of curb and the edge of pavement. Unless otherwise specified in the Proposal, the subbase material required to fill the void between the subgrade and the bottom of proposed pavement shall be provided and compacted in place and shall be considered incidental to the price paid for pavement excavation.

Payment for pavement excavation will be per cubic yard with the quantity of pavement excavation calculated from existing and proposed grades. The quantity paid will be based on plan quantity unless there is a field change which affects plan quantity. No field measurement for payment of pavement excavation will be done at the time of construction.

Item 12, 70

**Concrete Curb and Gutter, Remove** will be paid for at the Contract Unit Price per Linear Foot (LFT). Price paid shall be payment in full for labor, material, and equipment necessary for the removal of concrete curb and gutter, as shown on the Plans or as determined by Engineer, and shall include, but is not limited to, saw cutting, removal and disposal of unsuitable materials, furnishing, placing and compacting backfill, protection of existing improvements, barricading, and for other items necessary to complete the job, whether specifically mentioned or implied.

Measurement for removal of concrete curb and gutter will be determined by field measure of concrete curb and gutter removed.

Item 13

**Concrete Pavement or Concrete Base Course with Asphalt Surfacing, Remove** will be paid for at the Contract Unit Price per Square Yard (SYD). Price paid shall be payment in full for labor, material, and equipment necessary for the removal of concrete pavement in excess of six (6) inches thick, or for the removal of concrete base course with asphalt surfacing in excess of six (6) inches thick, as shown on the Plans or as determined by Engineer. This work shall include, but is not limited to saw cutting, removal and disposal of asphaltic surface courses and integral curbs, removal and disposal of unsuitable materials, furnishing, placing, and compacting backfill, protection of existing improvements, barricading, and for other items necessary to complete the job, whether specifically mentioned or implied.

Measurement for removal of concrete pavement in excess of six (6) inches thick, and for concrete base course with asphalt surfacing will be determined by field measure of concrete pavement or concrete base course with asphalt surfacing removed.

Item 14

**Removal of bituminous pavement**, regardless of thickness, will be paid for at the Contract Unit Price per square yard. Price paid shall be payment in full for all labor, material and equipment necessary for removing bituminous pavement, and shall include, but is not limited to, all sawcutting, excavation, protection of existing improvements, removal and disposal of unsuitable material, barricading, miscellaneous restoration or cleanup, and all other items necessary to complete the Work, whether specifically mentioned or implied. Measurement for removal of bituminous pavement will be by field measure of removed pavement is square yards.

Item 15

**Removing structures**, of the type specified, will be paid for at the Contract Unit Price on a per each unit basis. Price paid shall be payment in full for all labor, material, and equipment required for removal of existing structure, and shall include, but is not limited to, all excavation, sheeting, shoring, bracing, and dewatering; protection of existing improvements; removal of the existing structures; removing and disposing of all unsuitable material; also backfill, backfilling, rebuilding and reconnecting live sewers or mains; providing and maintaining a satisfactory sewer bypass service; bulkheading of abandoned sewers; maintaining drainage; and all items necessary to complete the job, whether specifically mentioned or implied. Removing structures will be measured on an each unit basis for each structure removed.

Item 16, 17, 18, 71

**Pavement, Bituminous, Cold Milling** up to 1.5, and 2 inches in depth, will be paid for at the Contract Unit Price per Square Yard (SYD). Price paid shall be payment in full for labor, material, and equipment required for cold milling bituminous pavement as shown on the plans, and shall include, but is not limited to, construction, protection of existing improvements, hand chipping around structures, removal and disposal of debris, traffic control, barricading, dust control, wedging driveways and streets, and other items necessary to complete the job, whether specifically mentioned or implied.

Measurement for cold milling bituminous pavement will be determined by field measure.

Item 19

**Removal of concrete sidewalks or driveways**, six (6) inches or less in thickness, will be paid for at the Contract Unit Price per square foot unit basis. Price paid shall be payment in full for all labor, material, and equipment necessary for the removal of concrete sidewalks or driveways six (6) inches or less in thickness; as shown on the Plans or as determined by the ENGINEER; and shall include, but is not limited to, saw cutting, removal and disposal of unsuitable materials; also furnishing, placing and compacting backfill; protection of existing improvements; barricading; and for all items necessary to complete the job, whether specifically mentioned or implied.

Measurement for removal of concrete sidewalks or driveways six (6) inches or less in thickness will be in square feet, determined by field measurement.

Item 20

**Removal of storm sewers and culverts** will be paid for at the Contract Unit Price per linear foot. Price paid shall be payment in full for all labor, material and equipment necessary for removal of storm sewer and culvert, and shall include, but is not limited to, all excavation, sheeting, shoring, bracing, and dewatering; protection of existing improvements; removal and disposal of unsuitable material and debris; removal and disposal of end sections and

headwalls; also backfill, backfilling, rebuilding and reconnecting live sewers; providing and maintaining a satisfactory sewer bypass service; maintaining drainage; and all items necessary to complete the job, whether specifically mentioned or implied. Removing storm sewers and culverts will be field measured in linear feet.

Item 21

**Remove existing gate valve and well structure** will be paid for at the Contract Unit Price per each. Price paid shall be payment in full for all labor, materials, and equipment required for removing existing gate valve and well, and shall include, but is not limited to, all excavation, sheeting, bracing, shoring, draining, and dewatering; backfilling (including backfill with special materials where specified); disposal of excess excavated material; protection of existing improvements; removing and salvaging gate valve and well frame and cover; removing valve well; cleanup; restoration; and all other items necessary to complete the job, whether specifically mentioned or implied. Removing gate valve and well structures will be measured as units removed.

Item 22

**Removing fire hydrants** will be paid for at the Contract Unit Price per each. Price paid shall be payment in full for all labor, material, and equipment necessary for removing fire hydrant, and shall include, but is not limited to, all excavation, sheeting, bracing, shoring, dewatering, and backfilling; disposal of excess excavated material; protection of existing improvements; thrust blocks; restoration; cleanup; removal of fire hydrant, valve, valve boxes, and connecting piping; capping of existing water main; delivering hydrant, gate valve and valve box to the OWNER; cleanup; restoration; and all other items necessary to complete the job, whether specifically mentioned or implied. Removing fire hydrant will be measured as units removed.

Item 23

**Soil erosion and sedimentation control devices** will be paid for at the Contract Unit Price per each. Price paid shall be payment in full for all labor, material and equipment necessary to furnish, install and maintain soil erosion and sedimentation control devices, and shall include, but is not limited to, inlet filters, check dams, ditch sediment traps, temporary gravel construction entrance/exit, and other devices as shown on the plans or detailed; maintaining devices; replacement of ineffective devices; removal of temporary devices; miscellaneous cleanup and restoration; and all items necessary to complete the Work, whether specifically mentioned or implied.

Item 24, 27, 28, 29, 35, 36

**Water main**, of the type, diameter and class specified, in open cut trench, will be paid for at the Contract Unit Price per linear foot. Price paid shall be payment in full for all labor, material, and equipment necessary for furnishing and installing water main, and shall include, but is not limited to, all excavation, sheeting, bracing, shoring, draining, dewatering, laying, jointing, bedding, testing and disinfecting; backfilling (including backfill with special materials where specified); disposal of excess excavated material; protection of existing improvements; temporary blow-offs; thrust blocks; fittings; encasement; barricading; restoration; final cleanup; connections to existing mains; and all other items necessary to complete the job, whether specifically mentioned or implied. Measurement for water main will be in linear feet along the centerline of the pipe taken from end-to-end with no reduction for fittings and valves except for special structures, sections or connections for which either lump sum or unit prices have been taken will be deducted from the total length of water main and will be paid for at the prices bid therefor.

Item 25

**Abandoning water main** will be paid for at the Contract Unit Price per cubic yard of flowable fill pumped into the existing mains. Price paid shall be payment in full for all labor, material, and equipment necessary for abandoning water main, and shall include, but is not limited

to, all excavation, sheeting, bracing, shoring, dewatering, and backfilling; disposal of excess excavated material; protection of existing improvements; all specials and fittings; capping ends of existing water main; thrust blocks; filling with flowable fill; cleanup; restoration; and all other items necessary to complete the job, whether specifically mentioned or implied. Measurement for abandoning water main shall be by certified batch plant delivery tickets of flowable fill submitted to the ENGINEER at time of placement.

Item 26

**Gate Valve and Well, 8 Inches**, will be paid for at the Contract Unit Price per Each. Price paid shall be payment in full for labor, material, and equipment necessary for furnishing and installing valve and well, and shall include, but is not limited to, valve, valve well foundation, steel reinforcing, bricks, blocks, valve well sections, adjusting rings, well frame and cover, cement mortar plaster coat, necessary excavation, sheeting and bracing, shoring, dewatering, connection to water main, backfilling, restraints, disposal of excess excavated material, thrust blocks, restoration, cleanup, and other items necessary to complete the job, whether specifically mentioned or implied.

Valve and well will be measured as units installed.

Item 30, 31, 32, 33

**Water service lines**, of the length and type specified, bored under the pavement from the new water main to the existing curb stop, will be paid for at the Contract Unit Price per each. Price paid shall be payment in full for all labor, material, and equipment necessary for furnishing and installing bored water service lines, and shall include, but is not limited to, all excavation, sheeting, bracing, shoring, dewatering, and backfilling; disposal of excess excavated material; protection of existing improvements; all water service pipe, curb stops, curb box, corporation stops, and special fittings; connection to new water main (including service clamps where specified); restoration; cleanup; and all other items necessary to complete the job, whether specifically mentioned or implied. Water service lines bored under the pavement from new water main to the existing curb stop will be measured as units installed.

Item 37

**Fire hydrant assemblies** will be paid for at the Contract Unit Price per each. Price paid shall be payment in full for all labor, material, and equipment necessary for furnishing and installing fire hydrant assemblies, and shall include, but is not limited to, all excavation, sheeting, bracing, shoring, dewatering, and backfilling; protection of existing improvements; also valves, valve boxes, fittings, thrust blocks, and connecting piping; connection to water main; disposal of excess excavated material; restoration; cleanup; and all other items necessary to complete the job, whether specifically mentioned or implied. Hydrants will be measured as units installed.

Item 38, 39, 40

**Curb stop and box** will be paid for at the Contract Unit Price per each with the sizes shown on the plans. Price paid shall be payment in full for all labor, material, and equipment required for installation of new curb stop and new curb box on existing and/or new water service line, and shall include, but is not limited to, all excavation, sheeting, bracing, shoring, dewatering, and backfilling; disposal of excess excavated material; protection of existing improvements; connection to existing water service line; restoration; cleanup; and all other items necessary to complete the job, whether specifically mentioned or implied. This item will be used at the discretion of the ENGINEER when an existing water service line cannot be connected to the existing curb stop or whenever determined by the ENGINEER.



Item 41, 44, 74

**Remove and replace structure frame and cover** will be paid for at the Contract Unit Price per pound. Price paid shall be payment in full for all labor, material and equipment necessary for removing the existing frame and cover and replacing with a new frame and cover, and shall include, but is not limited to, all excavation, removing and salvaging existing frame and cover, furnishing and installing new frame and cover, sand backfill, cleanout of structure, removal and disposal of unsuitable or excess material, and all other items necessary to complete the Work, whether specifically mentioned or implied.

Measurement for remove and replace structure cover will be in pounds determined by the scale weight of the new frame and cover.

Item 42, 72

**Structure, Adjust** of the size, type, and material specified will be paid for at the Contract Unit Price per Each. Price paid shall be payment in full for labor, material, and equipment required to raise the frame and cover on an otherwise sound structure. This work shall include, but is not limited to, sawcutting, removal and disposal of pavement, excavation, construction, bricks, blocks, precast adjustment rings, PVC pipe, or other materials necessary to adjust the designated structure, masonry plaster coat, backfill, disposal of unsuitable or excess material, concrete, installation of frame and cover, cleanout of structure, restoration, and other items necessary to complete the job, whether specifically mentioned or implied.

Item 42A, 72A

**Temporarily Lowering of Drainage Structure** of the size, type, and material specified will be paid for at the Contract Unit Price per Each. Price paid shall be paid in full for labor, material, and equipment required to lower the drainage structure prior to milling. This work shall include, but is not limited to, recording the location of the structure so each cover can be installed at its original location, remove the existing frames and covers and match/mark them for later identification and placement. Salvage and safely store frames and covers. Repair existing structure to allow uniform contact of the steel plate to the top of the structure. Place and compact the bituminous pavement for patching.

Item 43, 73

**Structure, Reconstruct** of the size, type, and material specified will be paid for at the Contract Unit Price on a Vertical Foot (VFT) basis. Price paid shall be payment in full for labor, material, and equipment required to either raise the frame and cover in excess of 12 inches, lower them in excess of six (6) inches, or to rebuild portions of the existing structure which need to be reconstructed due to deterioration; and shall include, but is not limited to, sawcutting, excavation, removal and disposal of pavement, construction, bricks, blocks, precast cone section, riser sections, top section, adjustment rings, joints, masonry plaster coat, steps, sand backfill, concrete pavement, installation of frame and cover, cleanout of structure, and other items necessary to complete the job, whether specifically mentioned or implied.

Measurement for reconstruction of structures will be in vertical feet, measured from the new elevation of the masonry below the casting down to the point where the structure has been reconstructed. A structure which has been paid for as "Structure, Reconstruct" will not be paid for as "Structure, Adjust".

Item 44, 45

**Storm sewers and culverts**, of the type and diameter specified on the Plans, in open cut trench will be paid for at the Contract Unit Price per linear foot. Price paid shall be payment in full for all labor, material, and equipment necessary for furnishing and installing storm sewer pipe and culvert pipe in open cut trench, and shall include, but is not limited to, all excavation, sheeting, bracing, shoring, dewatering, and backfilling; disposal of excess

excavated material; protection of existing improvements; sand backfill; stone pipe bedding; placing and removing of stoppers and bulkheads; final inspection which includes cleaning; stubs in drainage structures; connection to drainage structures and sewers; end sections; barricading; restoration; cleanup; and all other items necessary to complete the job, whether specifically mentioned or implied.

Measurement for storm sewers and culverts in open cut trench, will be in place, by length in linear feet, from center to center of end standard manholes, standard catch basins, standard inlets, headwalls, or other standard drainage structures, with no deduction in length for intermediate standard structures. However, where tee manholes or where special bid items, as indicated in Plans and Specifications, having a basis of payment of lump sum, are involved, the measurement will be from the end of the tee manhole or from the end of the special bid item nearest the adjoining drainage structure and the adjoining drainage structure.

Item 47, 49, 50

**Standard storm drainage structures**, of the type and diameter indicated, for depths up to eight (8) feet and for the first eight (8) feet of deeper structures, will be paid for at the Contract Unit Price on a per each. Price paid shall be payment in full for all labor, material, and equipment necessary for a complete standard storm drainage structure, and shall include but is not limited to, all excavation, sheeting, bracing, shoring, dewatering, and backfilling; disposal of excess excavated material; protection of existing improvements; also frame, cover, bricks, blocks, cone section, riser sections, top section, bottom section, masonry plaster coat, and steps; barricading; restoration; and all other items necessary to complete the job, whether specifically mentioned or implied. Additional depth of drainage structures, more than eight (8) feet, of the type and diameter specified will be measured by the vertical foot, to the nearest tenth, for that portion of all drainage structures more than eight (8) feet in depth from the top of the base to the top of the cover.

Item 48

**Edge drain**, of the diameter specified, will be paid for at the Contract Unit Price per linear foot. Price paid shall be payment in full for all labor, material, and equipment required for furnishing and installing the edge drain, and shall include, but is not limited to, all excavation, sheeting, bracing, shoring, dewatering, and backfilling; disposal of excess excavated material; protection of existing improvements; stone bedding; geotextile fabric wrap; placing of stoppers or bulkheads; connection to drainage structures; and all other items necessary to complete the job, whether specifically mentioned or implied.

Measurement for edge drain will be in linear feet, determined by field measurement of edge drain in place.

Item 51, 52

**Manhole over existing sewer**, for depths up to eight (8) feet and for the first eight (8) feet of deeper structures, will be paid for at the Contract Unit Price per each. Price paid shall be payment in full for all labor, material, and equipment necessary for a complete standard storm manhole constructed over an existing sewer, and shall include but is not limited to, all excavation, sheeting, bracing, shoring, dewatering, and backfilling; disposal of excess excavated material; protection of existing improvements; also frame, cover, bricks, blocks, cone section, riser sections, top section, bottom section, masonry plaster coat, and steps; connection to sewer; barricading; restoration; and all other items necessary to complete the job, whether specifically mentioned or implied. Additional depth of drainage structures, more than eight (8) feet, of the type and diameter specified will be measured by the vertical foot, to the nearest tenth, for that portion of all drainage structures more than eight (8) feet in depth from the top of the base to the top of the cover.

Item 53

**Subgrade undercut excavation and backfill** will be paid for at the Contract Unit Price per cubic yard unit basis. In cut areas, the price paid shall be payment in full for all labor, material, and equipment necessary for undercut excavation and disposal of all unsuitable material, as determined by the ENGINEER, below the proposed subgrade elevation, and shall include, but is not limited to, providing, placing and compacting the undercut backfill material. In fill areas, the price paid shall be payment in full for all labor, material, and equipment necessary for undercut excavation and disposal of all unsuitable material, as determined by the ENGINEER, below the existing ground elevation and shall include, but is not limited to, the placement and compaction of the undercut backfill material to existing grade.

Measurement for subgrade undercut excavation and backfill will be determined by field measurement.

Item 54

**Aggregate base course**, of the type and thickness specified on the Plans, will be paid for at the Contract Unit Price per ton unit basis. Price paid shall be payment in full for all labor, material, and equipment required for furnishing, placing and compacting the aggregate base course; and shall include, but is not limited to, all excavation, construction, and protection of existing improvements; also furnishing, placing, and compacting backfill and subbase; compacting and fine grading subgrade; furnishing and applying chemical additives and water; barricading; and for all items necessary to complete the job, whether specifically mentioned or implied.

Measurement for aggregate base course will be in tons, with the installed tonnage determined by certified delivery tickets submitted to the ENGINEER or his duly authorized representative. The delivery tickets shall indicate the scale weight of the material, including chemical additives and moisture content. For material having a moisture content in excess of six (6) percent, the excess over six (6) percent will be deducted from the scale weight of the material when the moisture content is six (6) percent. Material placed to conform to the cross section and width specified on the Plans or as determined by the ENGINEER will be paid for at the tonnage basis. If the width of the base course is increased to accommodate the CONTRACTOR in placing forms, etc., the additional material installed beyond the width specified on the Plans or as determined by the ENGINEER, will be at the CONTRACTOR's expense.

Item 55, 65, 66

**Sidewalks, sidewalk ramps, and driveway approaches**, of the thickness specified on the Plans, will be paid for at the Contract Unit Price per square foot. Price paid shall be payment in full for all labor, material, and equipment necessary for construction of sidewalks, sidewalk ramps and driveway approaches; and shall include, but is not limited to, all excavation, construction, and protection of existing improvements; also undercutting and backfilling the subgrade; compacting and fine grading subgrade; furnishing, placing, and compacting backfill and subbase; construction of expansion joints; also forming, placing, jointing, finishing and curing the concrete; construction of detectable warning; providing protection against rain and cold weather; barricading; restoration; and all other items necessary to complete the job, whether specifically mentioned or implied. Measurement for sidewalks, sidewalk ramps or driveway approaches, will be in square feet, field measured in place. Sidewalk ramps will be measured from back of curb to the key flag or to the end of the monolithic rolled curb whichever is less.

Item 56, 57, 75, 76

**Bituminous pavement**, of the type and thickness specified on the Plans, will be paid for at the Contract Unit Price per ton. Price paid shall be payment in full for all labor, material, and equipment necessary for the bituminous pavement, and shall include, but is not limited to, all excavation, construction, protection of existing improvements; also compacting and

fine grading subgrade; furnishing, placing and compacting backfill and subbase; furnishing, placing, rolling and compacting the various bituminous lifts or courses; furnishing and applying of prime and bond coats; barricading; restoration; and for all items necessary to complete the job, whether specifically mentioned or implied.

Measurement for bituminous pavement will be in tons, with the installed tonnage determined by certified batch plant delivery tickets submitted to the ENGINEER or his duly authorized representative, at the time of placement.

Item 57A

Patching with bituminous materials, of the type specified, will be paid for at the Contract Unit price per ton. Price paid shall be payment in full for all labor, material, and equipment necessary for the bituminous patching, and shall include, but is not limited to, all construction; saw cutting; chipping, removing and disposing of unsuitable materials; also furnishing and applying of prime and bond coats; preparation of existing pavement base; also the furnishing, placing, rolling, tamping, and compacting of the bituminous patching material; also for protection of existing improvements; barricading; restoration; and for all items necessary to complete the job, whether specifically mentioned or implied.

Measurement for patching with bituminous materials, of the type specified, will be in tons, with the installed tonnage determined by certified batch plant delivery tickets submitted to the ENGINEER or his duly authorized representative, at the time of placement

Item 58

**Concrete pavement** of the type and thickness specified will be paid for at the Contract Unit Price per square yard unit basis. Price paid shall be payment in full for all labor, material, and equipment necessary for construction of concrete pavement; and shall include, but is not limited to, all excavation, construction, and protection of existing improvements; also furnishing, placing and compacting backfill and subbase; also compacting and fine grading subgrade; also the furnishing and installing of hook bolt assemblies, tie bar assemblies, dowel bar assemblies, contraction joint basket assemblies, expansion joint basket assemblies, polyethylene planks, fillers, hot-poured elastic joint compound, mesh reinforcement, and bar mat reinforcement; also forming, placing, jointing, finishing, texturing and curing the concrete; also providing protection against rain and cold weather; barricading; pavement gapping; part width construction; miscellaneous restoration; and all other items necessary to complete the job, whether specifically mentioned or implied. Measurement for concrete pavement will be in square yards, determined by field measurement of the concrete in place.

Item 59, 59A, 59B, 59C, 59D, 59E, 77, 77A, 77B, 77C, 77D, 77E, 77F

**Pavement markings** of the type, width and color specified on the Plans, will be paid for at the Contract Unit Price per linear foot unit basis. Price paid shall be payment in full for all labor, material, and equipment necessary for pavement markings, actually placed, and shall include, but is not limited to, all preparation of surface, layout, removing any old markings, applying proposed pavement markings and glass beads, providing temporary barricading, cleanup, and all items necessary to complete the job, whether specifically mentioned or implied. Measurement for pavement markings will be in linear feet, determined by field measurement of the actual lines placed. Measurement for skip pavement markings shall be in linear feet for the full length with no deduction for the skipped portion of the line length.

Item 59F, 59G, 59H, 59I, 59J, 59K, 59L, 59M, 59N, 77G, 77H

**Pavement markings** of the type, width and color specified on the Plans, will be paid for at the Contract Unit Price per each. Price paid shall be payment in full for all labor, material, and equipment necessary for pavement word and/or symbol markings, and shall include, but is not limited to, all preparation of surface, layout, removing any old markings; applying proposed pavement markings, pavement word marking, pavement symbol markings, and glass beads; providing temporary barricading; cleanup; and all items necessary to complete the job, whether specifically mentioned or implied.

Item 60

**Remove and re-install parking bumpers** will be paid for at the Contract Unit Price per each. Price paid shall be payment in full for all labor, material and equipment necessary to remove, store, and re-install the existing parking bumpers, and shall include, but is not limited to, removing, stacking and protecting the parking bumpers; removing and reinstalling anchoring pins; furnishing and installing new anchor pins as required; and all other items necessary to complete the Work, whether specifically mentioned or implied.

Item 61

**Concrete collar** will be paid for at the Contract Unit Price per each. Price paid shall be payment in full for all labor, material, and equipment required for construction of a concrete collar around the drainage structure, and shall include, but is not limited to, all sawcutting, removal and disposal of existing pavement, excavation, construction of concrete collar, sand backfill, cleanout of structure, removal and disposal of unsuitable or excess material, and all other items necessary to complete the Work whether specifically mentioned or implied.

Item 62

**Parking bumpers**, of the type and length specified, will be paid for at the Contract Unit Price per each, in place. Price paid shall be payment in full for all labor, material, and equipment necessary for furnishing and installing precast, reinforced concrete parking bumpers and anchoring with pins as shown on the plans or specified.

Item 63, 64, 78

**Concrete curb and gutter**, of the type and width specified, will be paid for at the Contract Unit Price per linear foot unit basis. Price paid shall be payment in full for all labor, material, and equipment necessary for the concrete curb and gutter section, and shall include, but is not limited to, all excavation, construction, protection of existing improvements; also furnishing, placing, and compacting backfill and subbase; compacting and fine grading subgrade; providing and installing hook bolt assemblies, tie bar assemblies, and reinforcing steel; also forming, placing, jointing, finishing, texturing and curing the concrete; providing protection against rain and cold weather, backfilling; barricading; restoration; gapping; and all items necessary to complete the job, whether specifically mentioned or implied.

Measurement for concrete curb and gutter will be in linear feet, determined by field measurement of curb and gutter in place.

Item 67

**Restoration with topsoil (of the depth specified), and sod** will be paid for at the Contract Unit Price per square yard unit basis. Price paid shall be payment in full for all labor, material, and equipment necessary for furnishing and installing topsoil and sod to the cross section shown on the Plans or as determined by the ENGINEER, and shall include, but is not limited to, all excavation, subgrade preparation; filling, shaping, grading, plowing, discing, and raking subgrade; disposing of unsuitable material and excess material; furnishing fill and topsoil; placing sod; also pegging, rolling, and tamping sod; protection of

existing improvements; miscellaneous cleanup and restoration; maintenance and care; and all items necessary to complete the job, whether specifically mentioned or implied. The CONTRACTOR shall restore all areas disturbed by his operations.

Measurement for restoration with topsoil and sod will be determined by taking the length along the property line, field measured in linear feet, on each side of the proposed pavement, less the driveway width or the pavement width at the intersections. The limits of right-of-way restoration shall be as follows:

For rights-of-way with ditches, the limits of right-of-way restoration will be between a line located 1-foot from the top of ditch back slope nearest the right-of-way line, to the right-of-way line.

For rights-of-way without ditches, the limits of right-of-way restoration will be between the back of curb and the right-of-way line.

Areas disturbed outside of the limits indicated shall be restored at the CONTRACTOR's expense.

Item 68

**Sprinkler Allowance**, will be paid for at the Contract Unit Price per Lump Sum. Price paid shall be payment in full for all labor, material, and equipment required to restore all damaged sprinkler systems that occur from normal construction activities or determined by the Engineer. Any broken or damaged sprinklers outside of the construction zone will be repaired at the contractors expense.

Item 69

**Maintenance Aggregate** will be paid for at the Contract Unit Price per Ton. Price paid shall be payment in full for labor, material, and equipment required for furnishing and installing maintenance aggregate as shown on the plans or determined by the Engineer and shall include, but is not limited to, construction, protection of existing improvements, excavation, compacting and fine grading subgrade, furnishing, placing and compacting backfill and subbase, furnishing and applying chemical additives and water, also for barricading, and for other items necessary to complete the job, whether specifically mentioned or implied.

Measurement for maintenance aggregate will be determined by certified delivery tickets submitted to Engineer or Engineer's duly authorized representative on the job site at the time of delivery. Delivery tickets submitted after the delivery will not be accepted for payment. Stockpiled maintenance aggregate shall be kept separate from other aggregate materials. The delivery tickets shall indicate the scale weight of the material, including chemical additives and moisture content. For material having a moisture content in excess of six (6) percent, the excess over six (6) percent will be deducted from the scale weight of the material when the moisture content is six (6) percent. Material placed to conform to the cross section and width specified on the Plans or as determined by Engineer will be paid for at the tonnage basis specified. If the width of the maintenance aggregate is increased to accommodate Contractor's operation, the additional material installed beyond the width specified on the Plans or as determined by Engineer, will be at Contractor's expense.

----- Miscellaneous -----

**BENCHMARK#10 ELEV 729.48**

SET "X" MARK ON WESTERLY MOST BOLT OF LIGHT POLE, NORTHEAST CORNER OF S MAIN ST AND CHURCH

**BENCHMARK#6375 ELEV 729.36**

ARROW ON HYDRANT AT SOUTHWEST CORNER OF CITY HALL AND FIRE STATION

**NOTE:**

THE CITY OF PLYMOUTH IS RESPONSIBLE FOR PLACING PROPOSED THE SALVAGED AND PROPOSED BRICK. CONTRACTOR TO COORDINATE WITH FIELD ENGINEER AND CITY STAFF WHEN THIS WORK IS TO BE COMPLETED. ESTIMATED QUANTITY OF SALVAGED AND PROPOSED BRICK IS 1450 SFT.

CB-1  
STANDARD STORM CB OVER EXISTING SEWER  
RIM = 727.70  
PLACE 6" UNDERDRAIN  
10' IN 2 DIRECTIONS FROM CB

CB-100410  
RIM = 727.73  
10" SW INV 723.73  
6" NW INV 724.78  
10" NE INV 723.73

CB-100473  
RIM = 727.93  
10" NE INV 723.03  
UMH-100562  
RIM = 728.12

UMH-100334  
RIM = 728.34  
CB-100333  
RIM = 727.73  
10" S INV 724.53  
CB-100332  
RIM = 727.92  
10" SW INV 723.92  
6" NE INV 724.83

UMH-100334  
RIM = 728.34  
CB-100333  
RIM = 727.73  
10" S INV 724.53  
CB-100332  
RIM = 727.92  
10" SW INV 723.92  
6" NE INV 724.83

CB-100081  
RIM = 727.58  
10" SW INV 725.18  
ST-100277  
RIM = 728.12  
10" SE INV 723.82  
10" SW INV 722.72  
10" WNW INV 723.42  
10" NE INV 722.52

ST-100272  
RIM = 727.32  
10" WNW INV 724.02  
10" NE INV 724.92  
10" E INV 724.02  
4" ENE INV 724.22

ST-100176  
RIM = 728.57  
12" S INV 724.27  
8" SE INV 724.32

CB-3  
STANDARD STORM CB OVER EXISTING SEWER  
RIM = 727.91  
12" INV NW = 724.02

MH-1  
STANDARD STORM MH OVER EXISTING SEWER  
RIM = 728.00

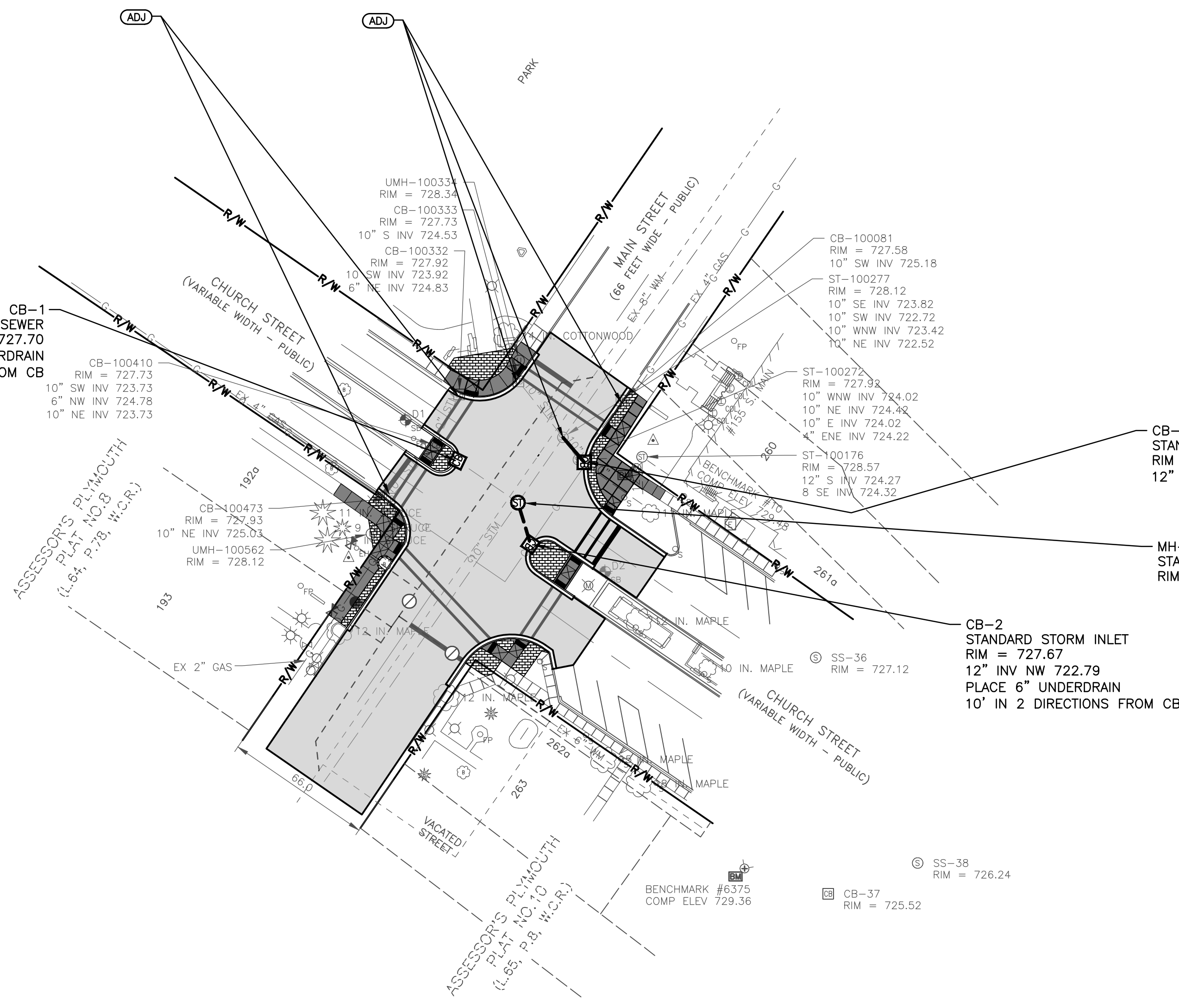
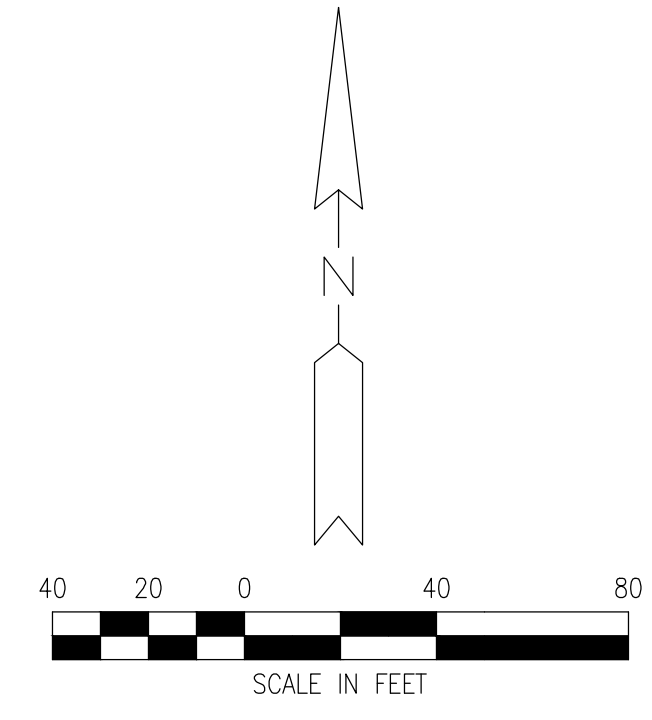
CB-2  
STANDARD STORM INLET  
RIM = 727.67  
12" INV NW 722.79  
PLACE 6" UNDERDRAIN  
10' IN 2 DIRECTIONS FROM CB

SS-36  
RIM = 727.12

SS-38  
RIM = 726.24

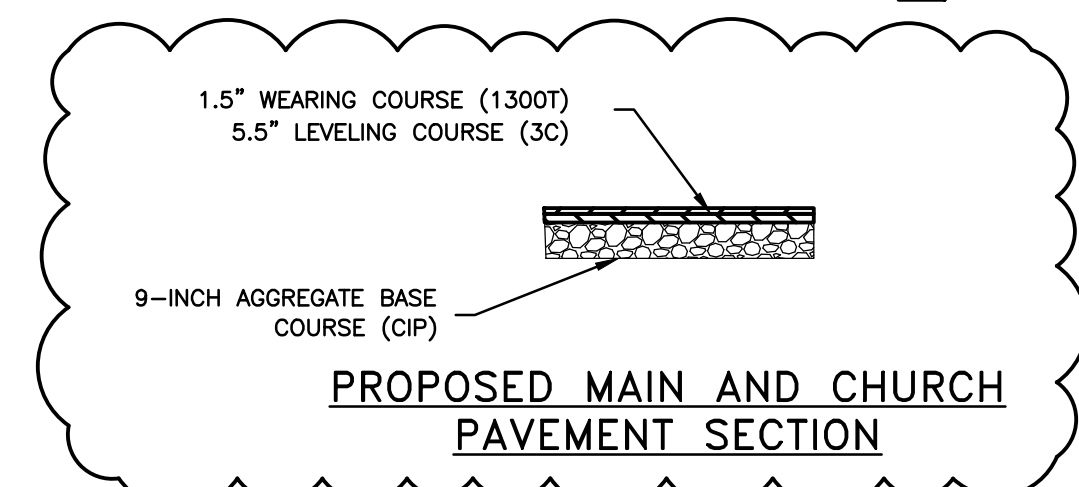
CB-37  
RIM = 725.52

BENCHMARK #6375  
COMP. ELEV 729.36



**PAVEMENT MARKING QUANTITIES THIS SHEET**

100	FT	PAVEMENT MARKING, WATERBORN, 24-INCH STOPBAR
425	FT	PAVEMENT MARKING, WATERBORN, 12-INCH CROSSWALK



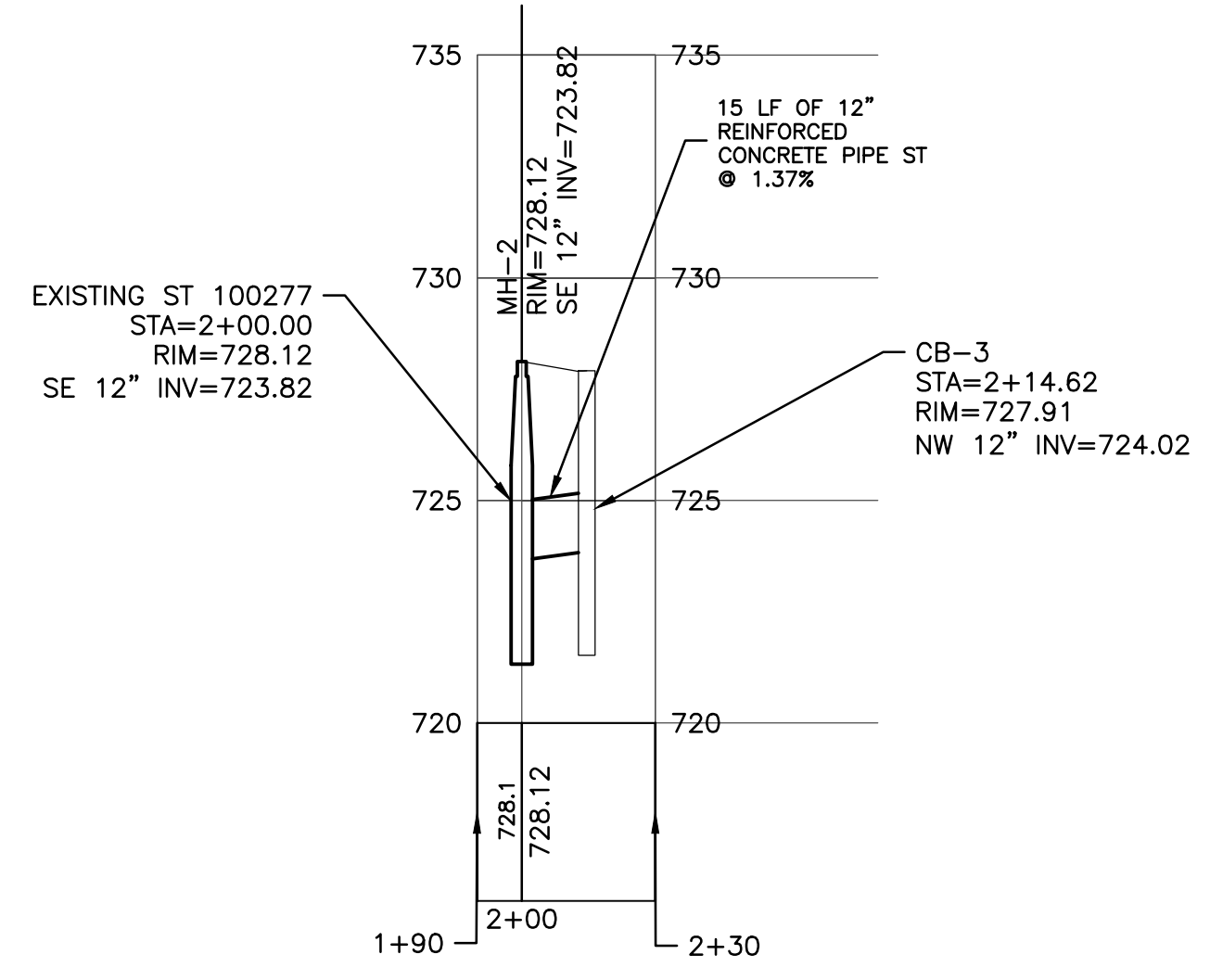
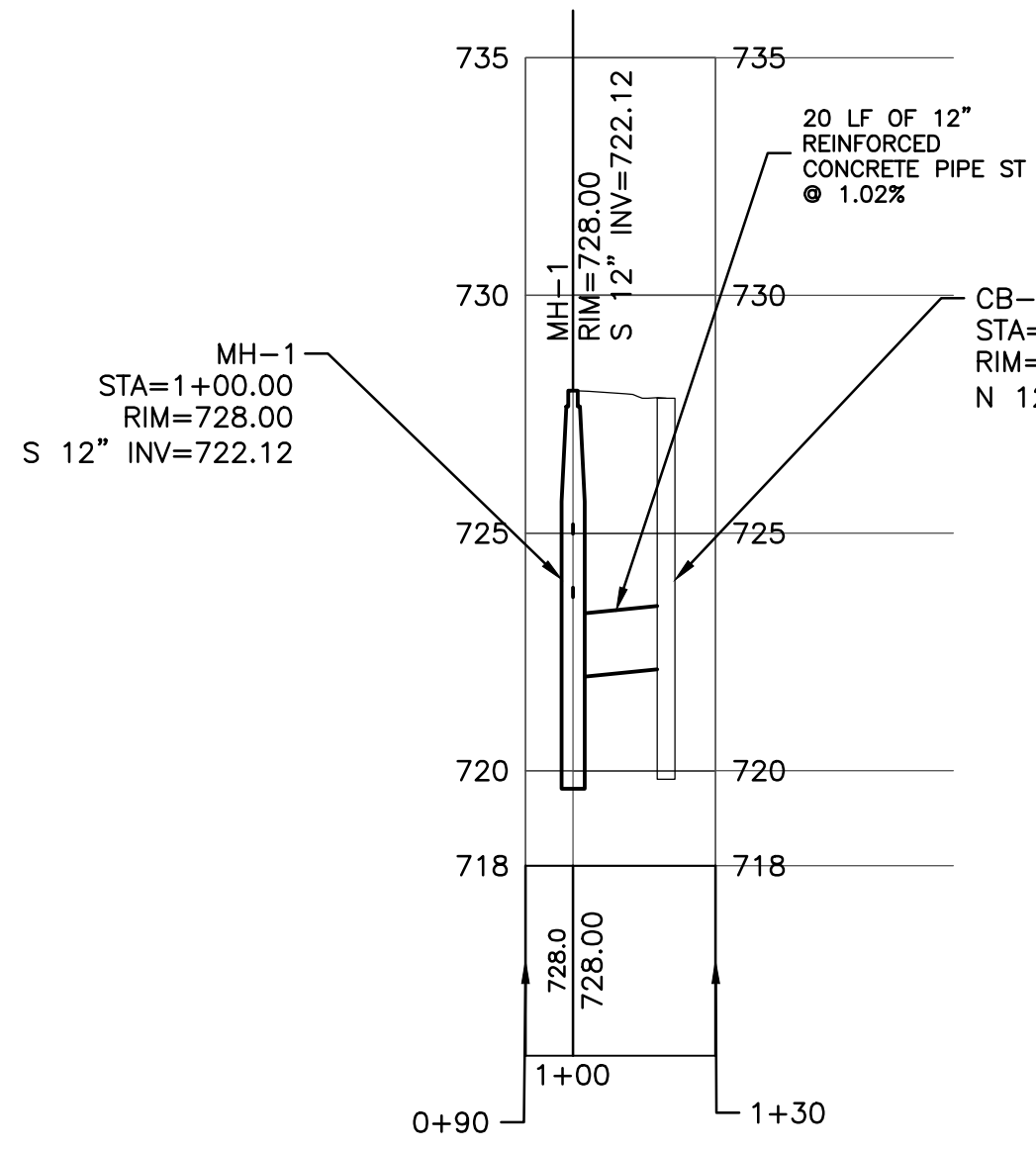
HMA APPLICATION ESTIMATE

IDENTIFICATION NO.	RATE PER SYD	PERFORMANCE GRADE	REMARKS
1300T	165*	64-22	WEARINGS
3C	605*	64-22	LEVELING (TWO LIFTS)

\* BOND COAT 0.016 GAL/SYD FOR INFORMATION ONLY

**SUMMARY OF QUANTITIES THIS SHEET**

QTY	UNIT	DESCRIPTION
100	CY	SUBGRADE UNDERCUT AND 21AA AGGREGATE BACKFILL
12	VF	RECONSTRUCT STRUCTURE
750	TON	AGGREGATE BASE COURSE, 21AA
150	TON	BITUMINOUS PAVEMENT, WEARING COURSE, 1300T
550	TON	BITUMINOUS PAVEMENT, LEVELING COURSE, 3C
400	LF	CURB AND GUTTER, CONCRETE, DET F4
6	EA	ADJUST STRUCTURE
1745	LB	REMOVE AND REPLACE FRAME AND COVER
60	LF	UNDERDRAIN, 6-INCH W/ GEOTEXTILE FABRIC WRAP
40	LF	12-INCH STORM SEWER, C76 CLIV, TRENCH B
1	EA	STANDARD STORM INLET
2	EA	BUILD STANDARD CB OVER EXISTING SEWER
1	EA	BUILD STANDARD MH OVER EXISTING SEWER
1	LS	PAVEMENT MARKING
5	EA	INLET FILTER



PROJECT MANAGER: SHAWN KEOUGH, CIVIL ENGINEER, LICENSE NO. 142889, CHURCH RECONSTRUCTION DWG - LAYOUT 1 - PLOTTED 4/17/2024 11:49 AM BY: FRISK, BRIAN



REV#	DATE	DESCRIPTION
1	4/18/24	ADDENDUM 1

20251 Northline Rd.  
Taylor, MI 48180  
www.wadetrim.com

**CITY OF PLYMOUTH**  
**201 S MAIN ST**  
**WAYNE COUNTY, MICHIGAN 48170**  
2024 INFRASTRUCTURE IMPROVEMENT PROGRAM  
CHURCH STREET  
RECONSTRUCTION PLAN AND STORM PROFILE

ISSUED FOR: DATE: BY:  
BYD 3-25-24 SWK

JOB NO.  
**PLY2129-01T**

SHEET  
**12**

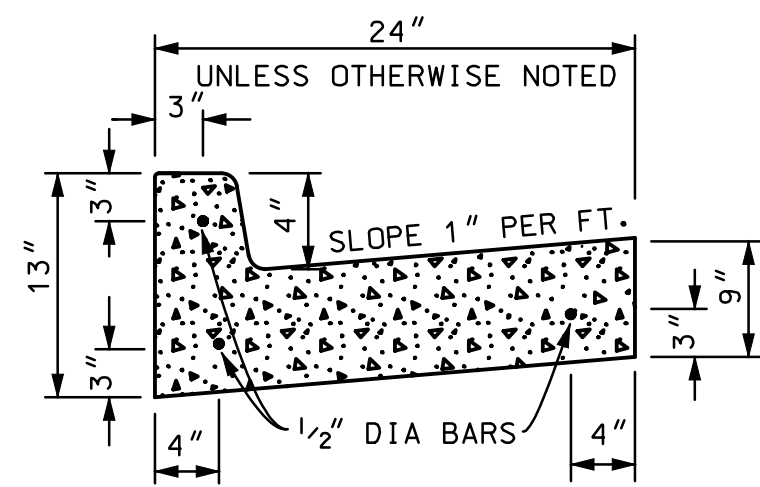
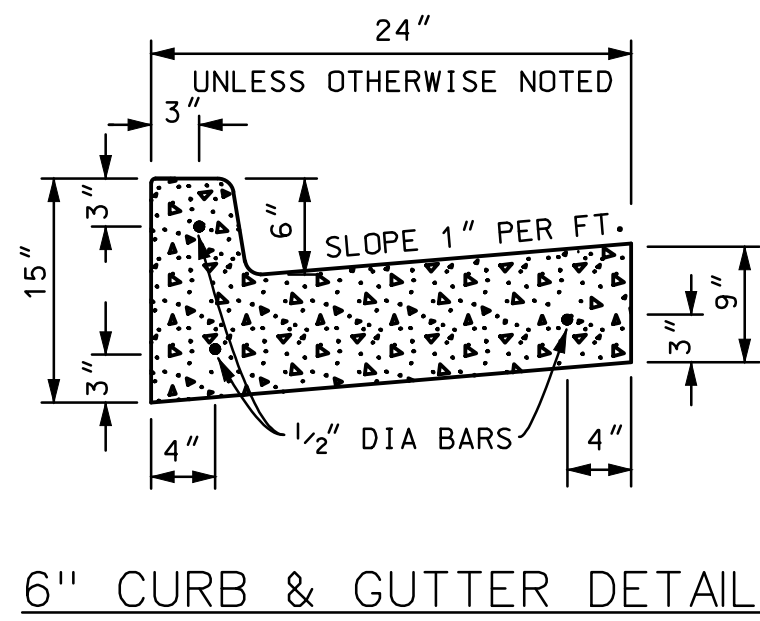
© Wade Trim Group, Inc. 2024 INFRASTRUCTURE IMPROVEMENT PROGRAM

**BENCHMARK#13** ELEV 739.14

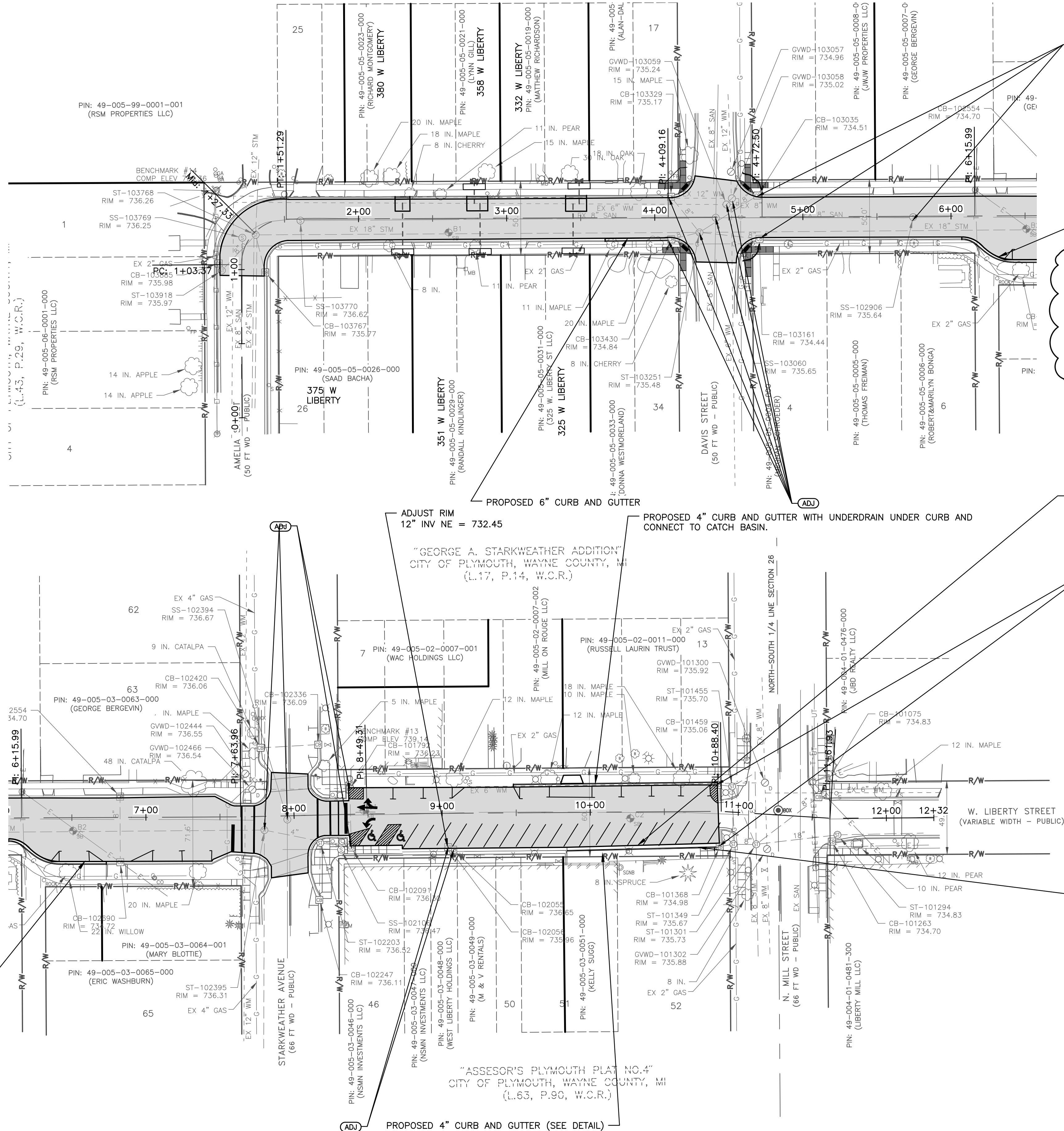
SET ARROW ON HYDRANT, NORTHEAST CORNER OF WEST LIBERTY STREET AND STARKWEATHER AVENUE.

**BENCHMARK#14** ELEV 738.36

SET MAG. IN SOUTH SIDE OF POWER POLE, NORTHWEST CORNER OF WEST LIBERTY STREET AND AMELIA STREET.



NOTE: PLACE UNDERDRAIN UNDER PROPOSED CURB AND GUTTER WHERE NOTED ON THE PLAN



**PAVEMENT MARKING QUANTITIES THIS SHEET**

200	FT	PAVEMENT MARKING, WATERBORN, 4-INCH BLUE
1000	FT	PAVEMENT MARKING, WATERBORN, 4-INCH WHITE
40	FT	PAVEMENT MARKING, WATERBORN, 24-INCH STOPBAR
125	FT	PAVEMENT MARKING, WATERBORN, 12-INCH CROSSWALK
2	EA	PAVEMENT MARKING, WATERBORN, HANDICAP SYMBOL
1	EA	PAVEMENT MARKING, THERMOPLASTIC, LEFT TURN ARROW
1	EA	PAVEMENT MARKING, THERMOPLASTIC, RIGHT TURN ARROW AND THRU

PROPOSED 4" CURB AND GUTTER SHALL BE INSTALLED SO THAT TOP OF CURB MATCHES EXISTING SIDEWALK. INSTALL UNDERDRAIN UNDER CURB AND CONNECT TO CATCH BASIN.

**LEGEND**

(ADJ) ADJUST STRUCTURE

NOTE: ALL STRUCTURES CALLED OUT ON THE PLANS TO BE ADJUSTED WILL GET A NEW FRAME AND COVER AND HAVE A CONTINGENCY QUANTITY OF TWO VERTICAL FEET OF RECONSTRUCTION. ANY ADDITIONAL RECONSTRUCTION DUE TO REPLACING THE FRAME AND COVER WILL BE AT THE CONTRACTORS EXPENSE.

**SUMMARY OF QUANTITIES THIS SHEET**

38	VF	RECONSTRUCT STRUCTURE
500	TON	BITUMINOUS PAVEMENT, WEARING COURSE, 1300T
10	TON	BITUMINOUS PAVEMENT, LEVELING COURSE, 3C
425	LF	CURB AND GUTTER, CONCRETE
19	EA	ADJUST STRUCTURE
5780	LB	REMOVE AND REPLACE FRAME AND COVER
370	LF	UNDERDRAIN, 6-INCH W/ GEOTEXTILE FABRIC WRAP
1	LS	PAVEMENT MARKING
14	EA	INLET FILTER
50	SY	RESTORATION WITH 2" TOPSOIL AND SOD
200	SF	CONCRETE DRIVES AND SIDEWALK, 6-INCH
9	EA	REMOVE AND SALVAGE PARKING BUMPERS
6	EA	CONCRETE PARKING BUMPER
15	TON	21AA AGGREGATE BASE COURSE



PROJECT MANAGER: BRANKY, KEOUGH  
C:\P\12092\1426283\CAD-PLS-LIBERTY\_RESURFACING.DWG - LAYOUT1 - PLOTTED: 4/17/2024 11:45 AM BY: FRISK, BRIAN



20251 Northline Rd. Taylor, MI 48180 www.wade-trim.com	WADE TRIM
CITY OF PLYMOUTH 201 S MAIN ST WAYNE COUNTY, MICHIGAN 48170	2024 INFRASTRUCTURE IMPROVEMENT PROGRAM LIBERTY STREET RESURFACING PLAN
ISSUED FOR: BID	DATE: 3-25-24
BY: SWK	
JOB NO: PLY2129-01T	
SHEET 20	

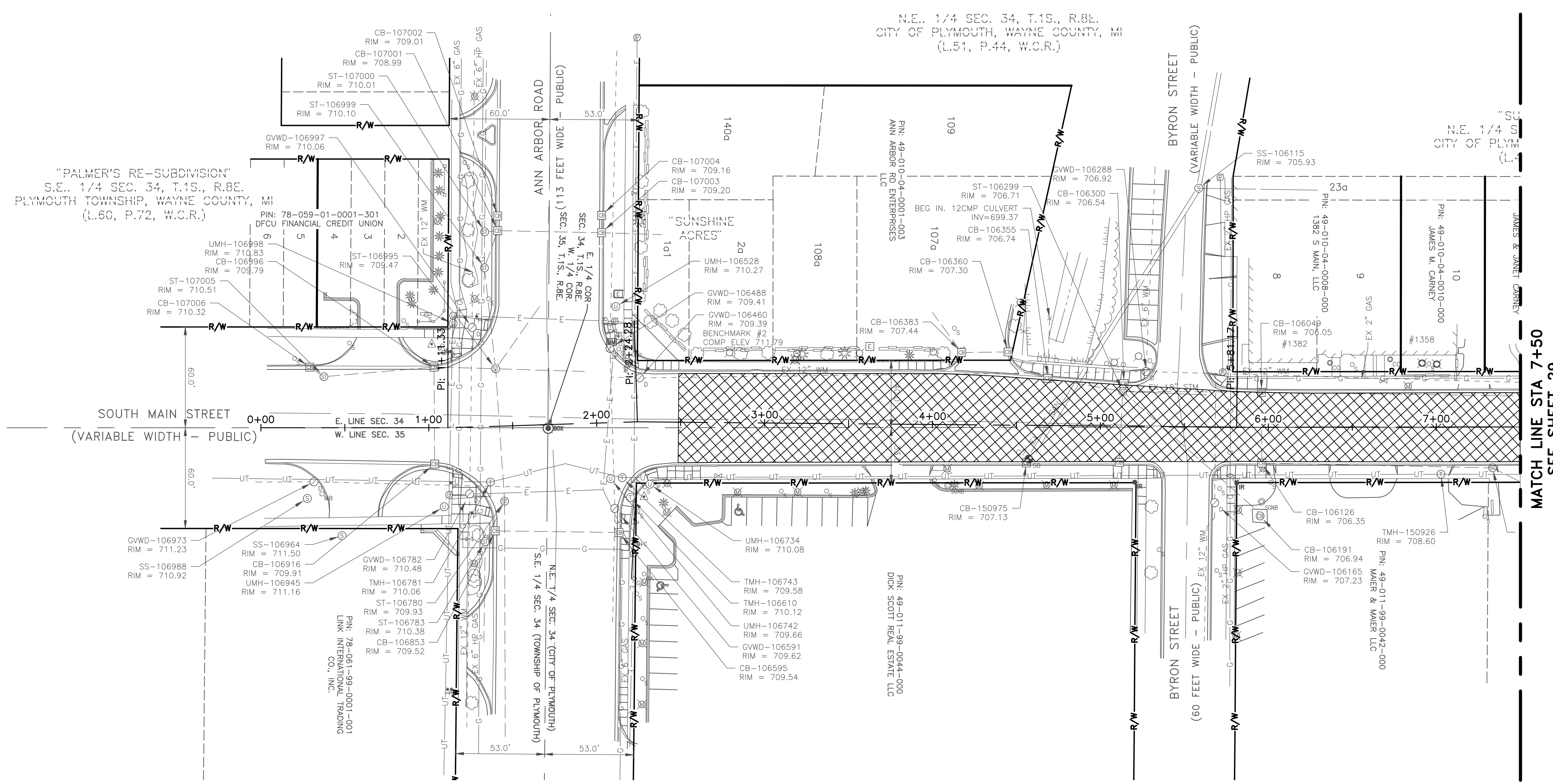
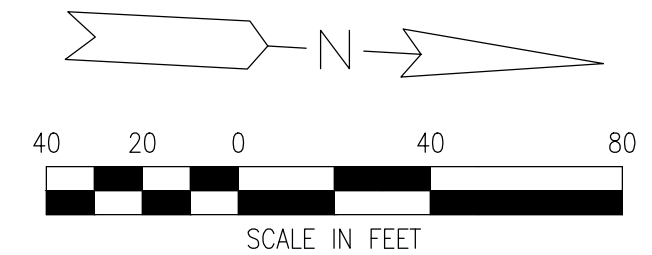


BENCHMARK#2 ELEV 711.79

ARROW ON HYDRANT NORTHWEST QUADRANT OF ANN ARBOR ROAD AND MAIN STREET.

BENCHMARK#3 ELEV 713.53

NORTHEAST BOLT ON LIGHT POST BASE, SOUTHWEST QUADRANT OF MAIN STREET AND SIMPSON AVENUE.



NOTE: REMOVAL OF CONCRETE CURB AND GUTTER WILL BE MARKED BY ENGINEER/CITY PRIOR TO MILLING OF CONCRETE PAVEMENT.  
AN ESTIMATED QUANTITY OF CURB AND GUTTER REMOVAL HAS BEEN INCLUDED ON S MAIN REMOVAL SHEETS

LEGEND

- MILL BITUMINOUS PAVEMENT (cross-hatched pattern)
- CONCRETE DRIVE AND SIDEWALK (stippled pattern)
- CONCRETE CURB AND GUTTER REMOVE (dashed line)

SUMMARY OF QUANTITIES THIS SHEET

Table with 2 columns: Quantity and Description. Includes entries for COLD MILLING BITUMINOUS PAVEMENT 2-INCHES DEEP and CURB AND GUTTER, REMOVE.

PROJECT MANAGER: SHAWN KEOUGH, CIVIL ENGINEER (P.E.) 42283, CRR-PLTS-S MAIN REMOVAL DWG - LAYOUT1 - PLOTTED 4/17/2024 7:58 AM BY FRISK, BRIAN



Know what's below. Call before you dig.

Table with columns: REV#, DATE, DESCRIPTION. Shows revision 1 dated 4/18/24.

WADE TRIM logo and contact information: 20251 Northline Rd., Taylor, MI 48180, www.wadetrिम.com

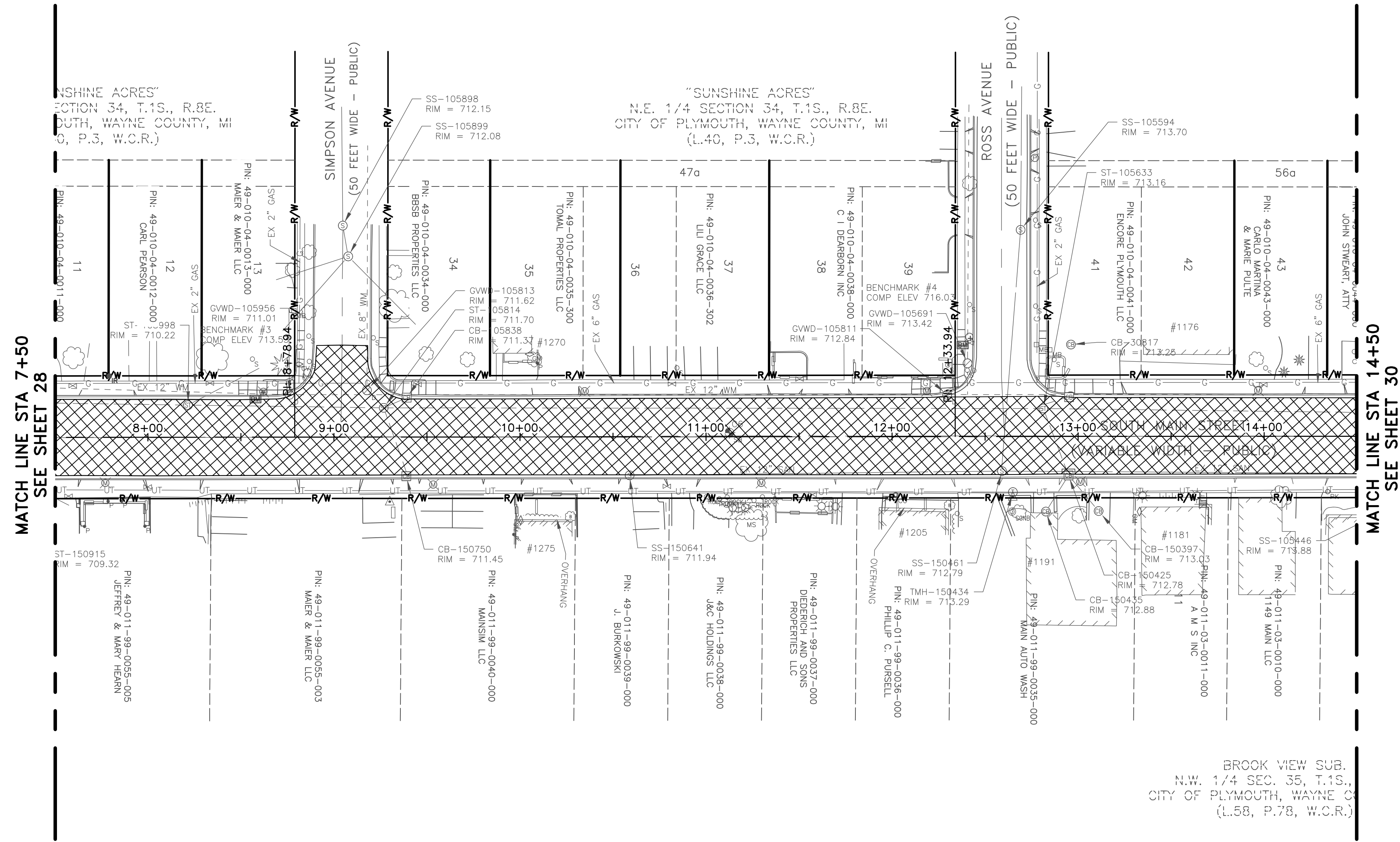
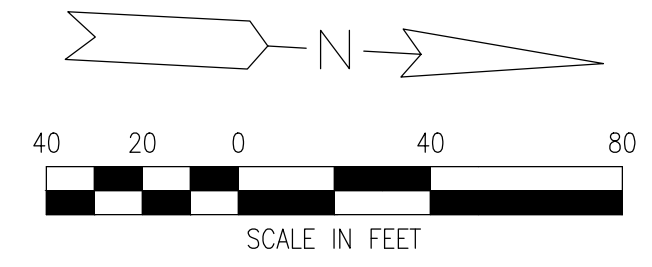
CITY OF PLYMOUTH  
201 S MAIN ST  
WAYNE COUNTY, MICHIGAN 48170  
2024 INFRASTRUCTURE IMPROVEMENT PROGRAM  
REMOVAL PLAN STA 0+00 TO STA 7+50

Table with columns: ISSUED FOR, DATE, BY, BID, JOB NO., SHEET. Includes job number PLY2129-01T and sheet number 28.

© Wade Trim Group, Inc. 2024 INFRASTRUCTURE IMPROVEMENT PROGRAM

**BENCHMARK#4** ELEV 716.03  
ARROW ON HYDRANT SOUTHWEST QUADRANT OF MAIN STREET AND ROSS AVENUE.

**BENCHMARK#5** ELEV 716.84  
NORTHEAST NUT ON HYDRANT NORTHWEST QUADRANT OF MAIN STREET AND HARTSOUGH.



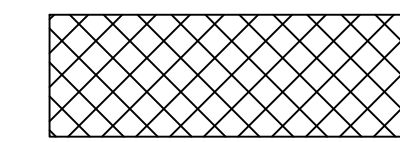
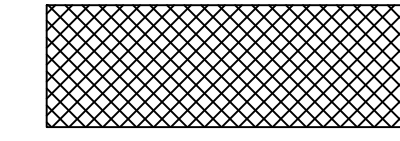

MATCH LINE STA 7+50  
SEE SHEET 28

MATCH LINE STA 14+50  
SEE SHEET 30

NOTE: REMOVAL OF CONCRETE CURB AND GUTTER WILL BE MARKED BY ENGINEER/CITY PRIOR TO MILLING OF CONCRETE PAVEMENT.

AN ESTIMATED QUANTITY OF CURB AND GUTTER REMOVAL HAS BEEN INCLUDED ON S MAIN REMOVAL SHEETS

**LEGEND**

-  MILL BITUMINOUS PAVEMENT
-  CONCRETE DRIVE AND SIDEWALK
-  CONCRETE CURB AND GUTTER, REMOVE

**SUMMARY OF QUANTITIES THIS SHEET**

5500	SY	COLD MILLING BITUMINOUS PAVEMENT 2-INCHES DEEP
900	SF	CONCRETE DRIVE AND SIDEWALK REMOVE
350	LF	CURB AND GUTTER, REMOVE
100	SY	PAVEMENT FOR BUTT JOINT REMOVE

REV#	DATE	DESCRIPTION	SWK	BY
1	4/18/24	ADDENDUM 1		

20251 Northline Rd.  
Taylor, MI 48180  
www.wadetrिम.com



**CITY OF PLYMOUTH**  
**201 S MAIN ST**  
**WAYNE COUNTY, MICHIGAN 48170**  
2024 INFRASTRUCTURE IMPROVEMENT PROGRAM  
REMOVAL PLAN STA 7+50 TO STA 14+50

ISSUED FOR: DATE: BY:  
BID 3-25-24 SWK

JOB NO.  
PLY2129-01T

SHEET

PROJECT MANAGER: SHAWN KEOUGH  
C:\P\_L\2024\2129\2129-01T-S MAIN REMOVAL.DWG - LAYOUT1 (2) - PLOTTED 4/17/2024 7:37 AM BY FRISK, BRIAN



Know what's below.  
Call before you dig.

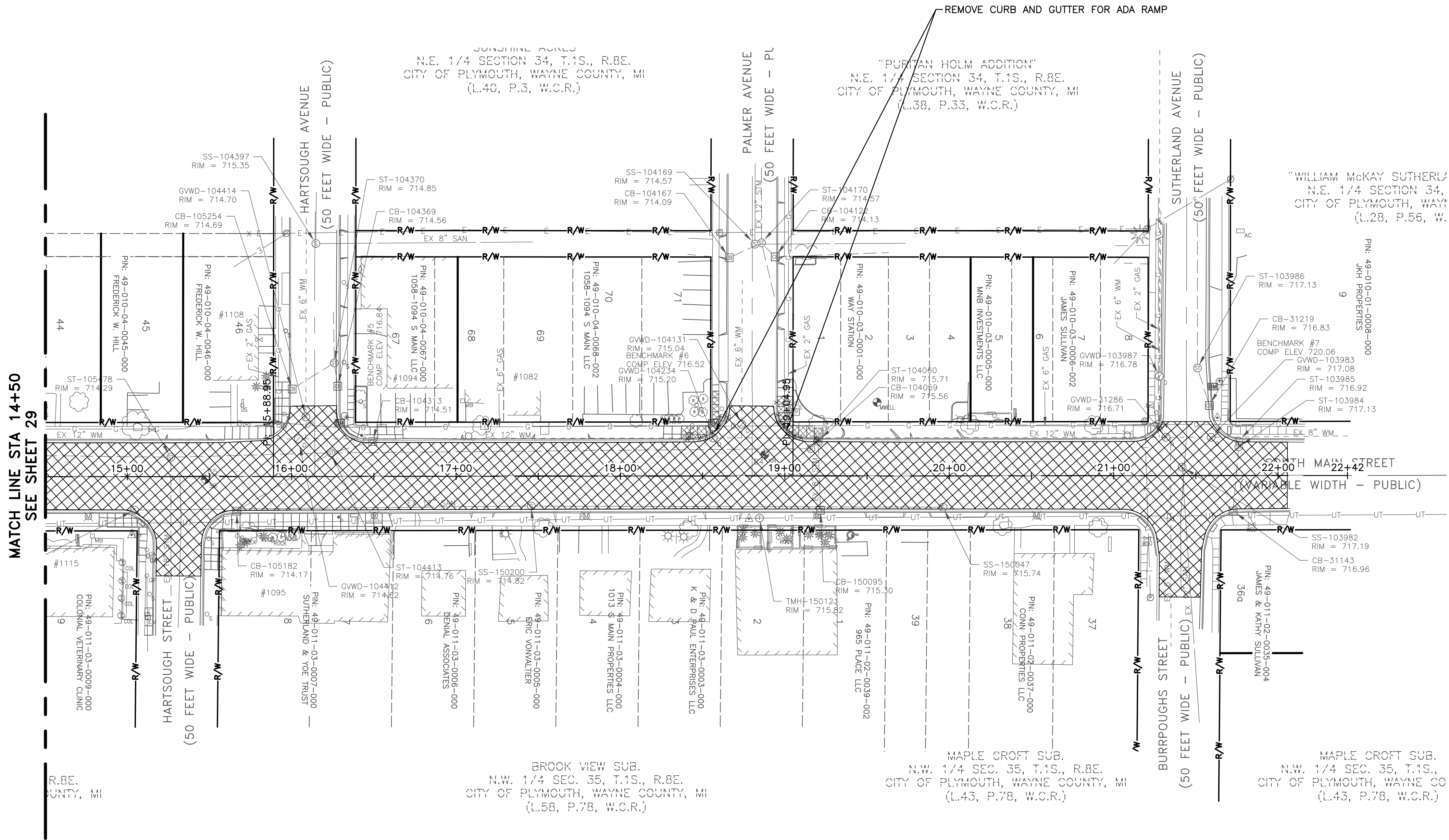
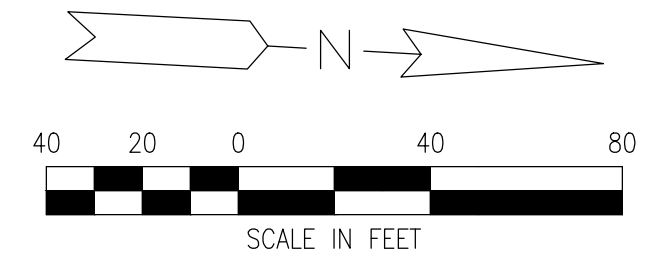
© Wade Trim Group, Inc. 2024 INFRASTRUCTURE IMPROVEMENT PROGRAM

BENCHMARK #6 ELEV 716.52

SOUTHEAST NUT ON HYDRANT SOUTHWEST QUADRANT OF PALMER AVENUE AND MAIN STREET.

BENCHMARK #7 ELEV 720.06

ARROW ON HYDRANT NORTHWEST QUADRANT OF MAIN STREET AND SUTHERLAND AVENUE.



NOTE: REMOVAL OF CONCRETE CURB AND GUTTER WILL BE MARKED BY ENGINEER/CITY PRIOR TO MILLING OF CONCRETE PAVEMENT.

AN ESTIMATED QUANTITY OF CURB AND GUTTER REMOVAL HAS BEEN INCLUDED ON S MAIN REMOVAL SHEETS

LEGEND

- Mill bituminous pavement (cross-hatch pattern)
Concrete drive and sidewalk (dotted pattern)
Concrete curb and gutter, remove (dashed pattern)

SUMMARY OF QUANTITIES THIS SHEET

Table with 4 columns: Quantity, Unit, Description, and Notes. Includes items like '4000 SY COLD MILLING BITUMINOUS PAVEMENT 2-INCHES DEEP' and '500 LF CURB AND GUTTER, REMOVE'.

PROJECT MANAGER: SHAWN KEOUGH, CIVIL ENGINEER, 1422893, CRP-PLTS-S MAIN REMOVAL.DWG - LAYOUT1 (3) - PLOTTED 4/17/2024 7:38 AM BY FRISK, BRIAN



Know what's below. Call before you dig.

Revision table with columns: REV#, DATE, DESCRIPTION. Shows revision 1 dated 4/18/24.

WADE TRIM logo and contact information: 20251 Northline Rd., Taylor, MI 48180, 313.481.4444, www.wadetrim.com

CITY OF PLYMOUTH
201 S MAIN ST
WAYNE COUNTY, MICHIGAN 48170
2024 INFRASTRUCTURE IMPROVEMENT PROGRAM
REMOVAL PLAN STA 14+50 TO STA 22+05

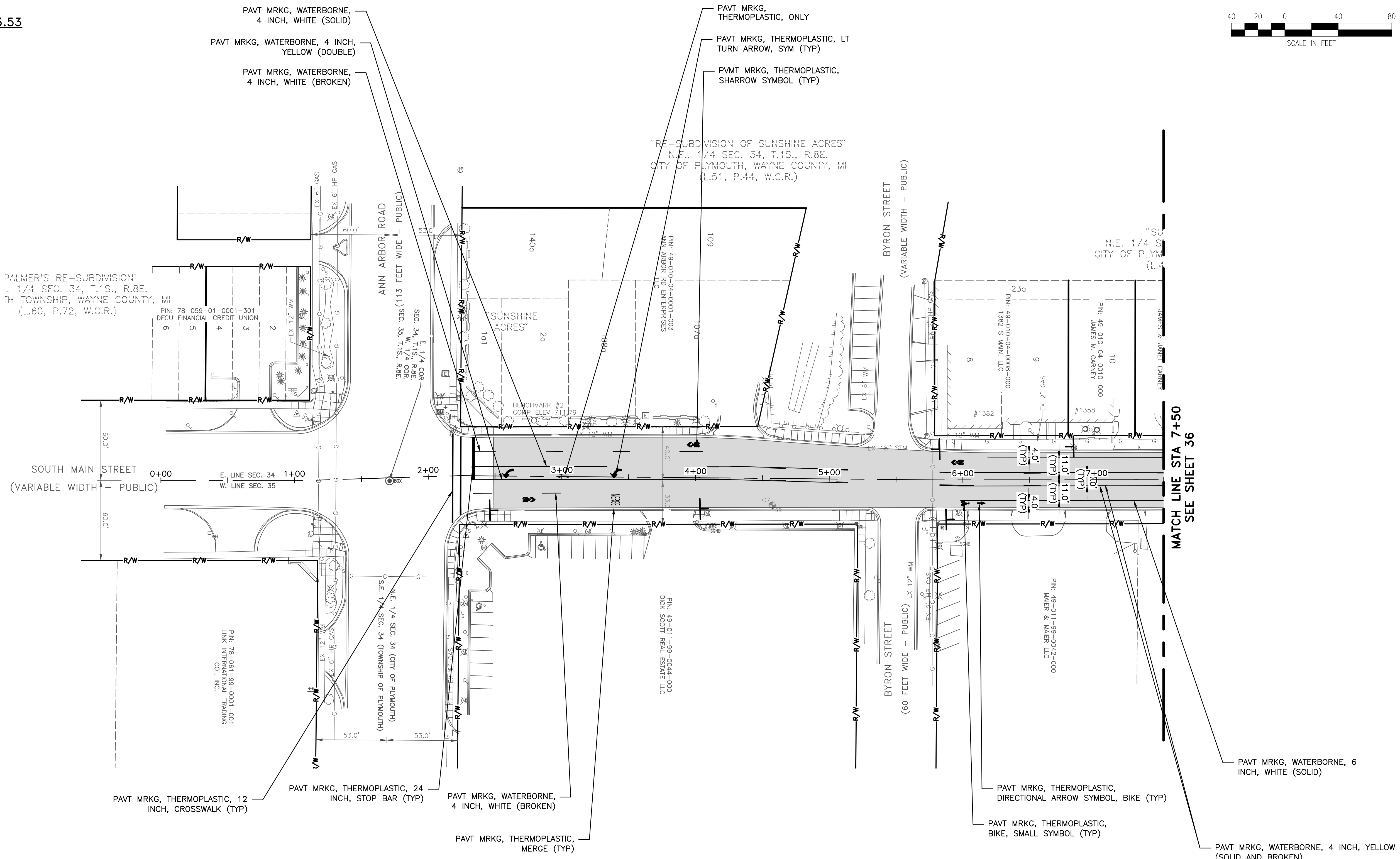
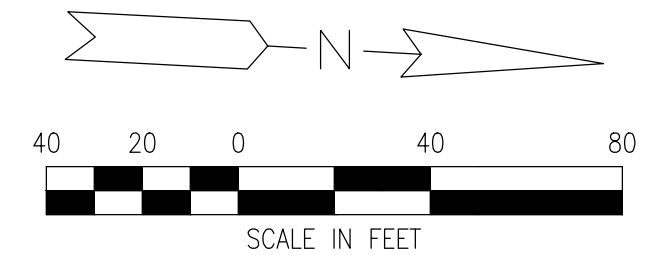
Issued for, Date, By, Bid information: ISSUED FOR: BID, DATE: 3-25-24, BY: SWK

**BENCHMARK#2** ELEV 711.79

ARROW ON HYDRANT NORTHWEST QUADRANT OF ANN ARBOR ROAD AND MAIN STREET.

**BENCHMARK#3** ELEV 713.53

NORTHEAST BOLT ON LIGHT POST BASE, SOUTHWEST QUADRANT OF MAIN STREET AND SIMPSON AVENUE.



**SUMMARY OF QUANTITIES THIS SHEET**

1400	LF	PAVT MRKG, WATERBORNE, 4 INCH, YELLOW
110	LF	PAVT MRKG, WATERBORNE, 4 INCH, WHITE
900	LF	PAVT MRKG, WATERBORNE, 6 INCH, WHITE
215	LF	PAVT MRKG, THERMOPLASTIC, 12 INCH, CROSSWALK
32	LF	PAVT MRKG, THERMOPLASTIC, 24 INCH, STOP BAR
1	EA	PAVT MRKG, THERMOPLASTIC, MERGE ARROW
1	EA	PAVT MRKG, THERMOPLASTIC, BIKE, SMALL SYMBOL
1	EA	PAVT MRKG, THERMOPLASTIC, DIRECTIONAL ARROW SYMBOL, BIKE
2	EA	PAVT MRKG, THERMOPLASTIC, LT TURN ARROW, SYM
1	EA	PAVT MRKG, THERMOPLASTIC, MERGE
1	EA	PAVT MRKG, THERMOPLASTIC, ONLY
3	EA	PAVT MRKG, THERMOPLASTIC, SHARROW SYMBOL

PROJECT MANAGER: SHAWN KEOUGH, CIVIL ENGINEER, LICENSE NO. 142283, 142283-CR-PLTS-S MAIN, RESURFACE PAVEMENT MARKINGS, LAYOUT, FIELD BOOK INFORMATION: 4/17/2024 11:54 AM BY FRISK, BRIAN



Know what's below.  
Call before you dig.

REV#	DATE	DESCRIPTION
1	4/18/24	ADDENDUM 1

20251 Northline Rd.  
Taylor, MI 48180  
www.wadetrim.com

**CITY OF PLYMOUTH**  
**201 S MAIN ST**  
**WAYNE COUNTY, MICHIGAN 48170**  
2024 INFRASTRUCTURE IMPROVEMENT PROGRAM  
S MAIN STREET - PAVEMENT MARKING PLAN  
STA 0+00 TO STA 7+50

ISSUED FOR:	DATE:	BY:
BID	3-25-24	SWK
JOB NO.	PLY2129-01T	
SHEET	35	

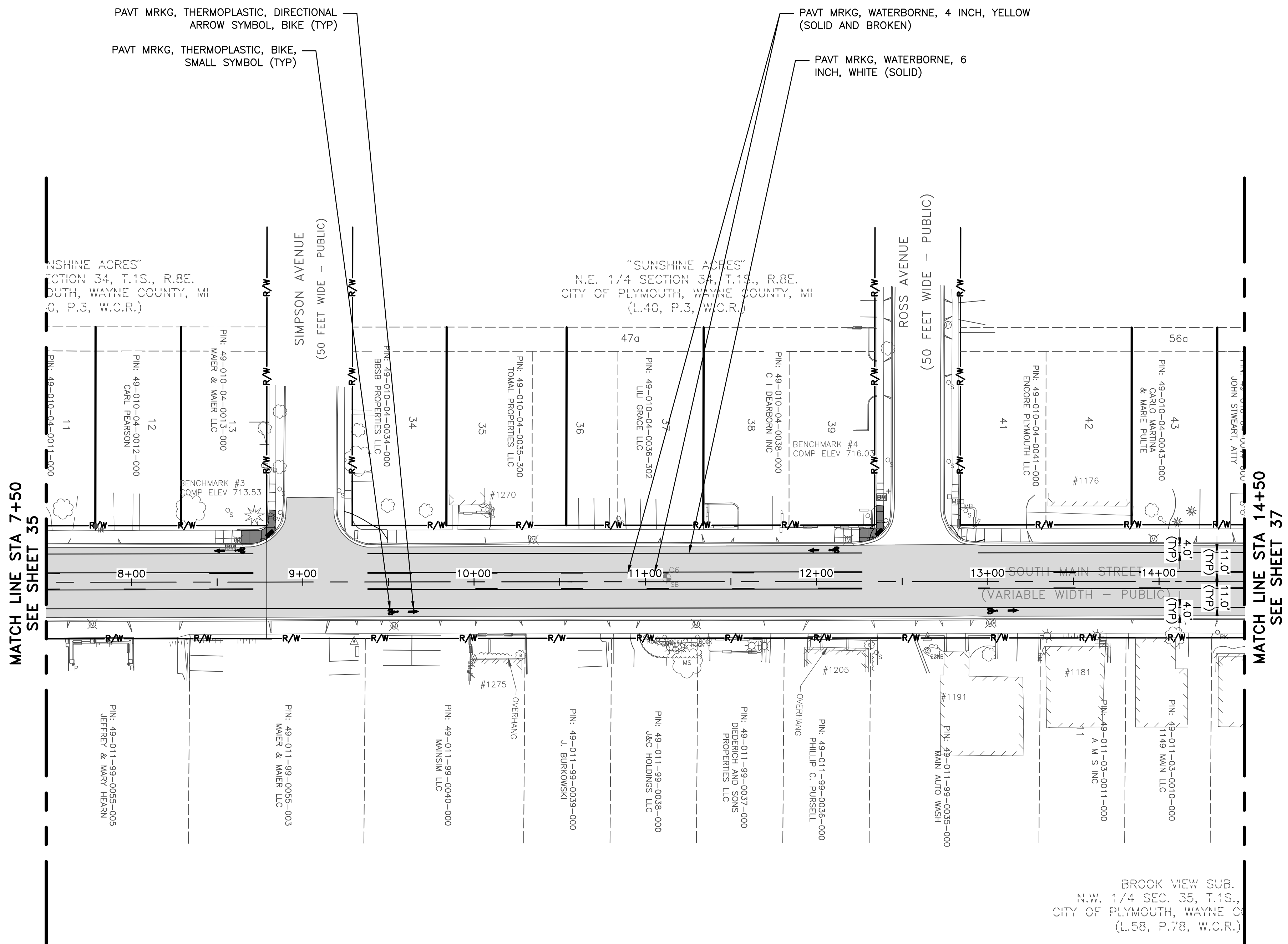
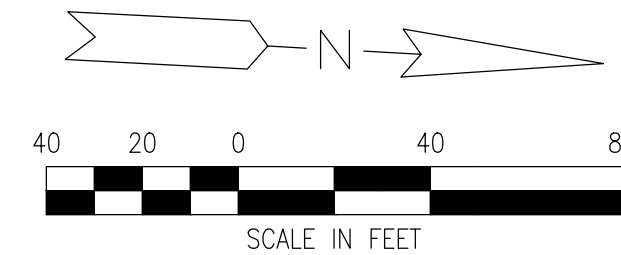
© Wade Trim Group, Inc. 2024 INFRASTRUCTURE IMPROVEMENT PROGRAM

BENCHMARK#4 ELEV 716.03

ARROW ON HYDRANT SOUTHWEST QUADRANT OF MAIN STREET AND ROSS AVENUE.

BENCHMARK#5 ELEV 716.84

NORTHEAST NUT ON HYDRANT NORTHWEST QUADRANT OF MAIN STREET AND HARTSOUGH.



MATCH LINE STA 7+50 SEE SHEET 35

MATCH LINE STA 14+50 SEE SHEET 37

SUMMARY OF QUANTITIES THIS SHEET

1400	LF	PAVT MRKG, WATERBORNE, 4 INCH, YELLOW
110	LF	PAVT MRKG, WATERBORNE, 4 INCH, WHITE
900	LF	PAVT MRKG, WATERBORNE, 6 INCH, WHITE
4	EA	PAVT MRKG, THERMOPLASTIC, BIKE, SMALL SYMBOL
4	EA	PAVT MRKG, THERMOPLASTIC, DIRECTIONAL ARROW SYMBOL, BIKE

PROJECT MANAGER: SHAWN KEOUGH  
C:\P\_L\JOB\210142289\CAD-PLTS-S MAIN RESURFACE PAVEMENT MARKINGS.DWG - LAYOUT (2) - PLOTTED 4/17/2024 11:53 AM BY FRISK, BRIAN



Know what's below.  
Call before you dig.

REV#	DATE	DESCRIPTION	SWK	BY
1	4/18/24	ADDENDUM 1		

20251 Northline Rd.  
Taylor, MI 48180  
www.wadetrim.com



CITY OF PLYMOUTH  
201 S MAIN ST  
WAYNE COUNTY, MICHIGAN 48170  
2024 INFRASTRUCTURE IMPROVEMENT PROGRAM  
S MAIN STREET - PAVEMENT MARKING PLAN  
STA 7+50 TO STA 14+50

ISSUED FOR: DATE: BY:  
BID 3-25-24 SWK

JOB NO.  
PLY2129-01T

SHEET  
36

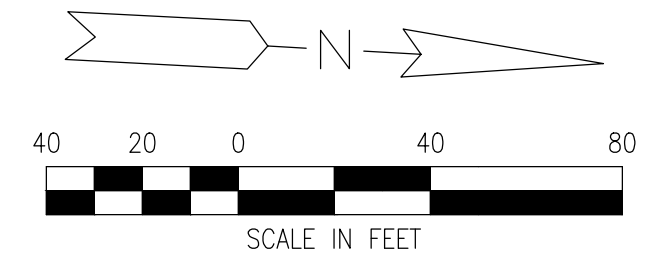
© Wade Trim Group, Inc. 2024 INFRASTRUCTURE IMPROVEMENT PROGRAM

BENCHMARK #6 ELEV 716.52

SOUTHEAST NUT ON HYDRANT SOUTHWEST QUADRANT OF PALMER AVENUE AND MAIN STREET.

BENCHMARK #7 ELEV 720.06

ARROW ON HYDRANT NORTHWEST QUADRANT OF MAIN STREET AND SUTHERLAND AVENUE.

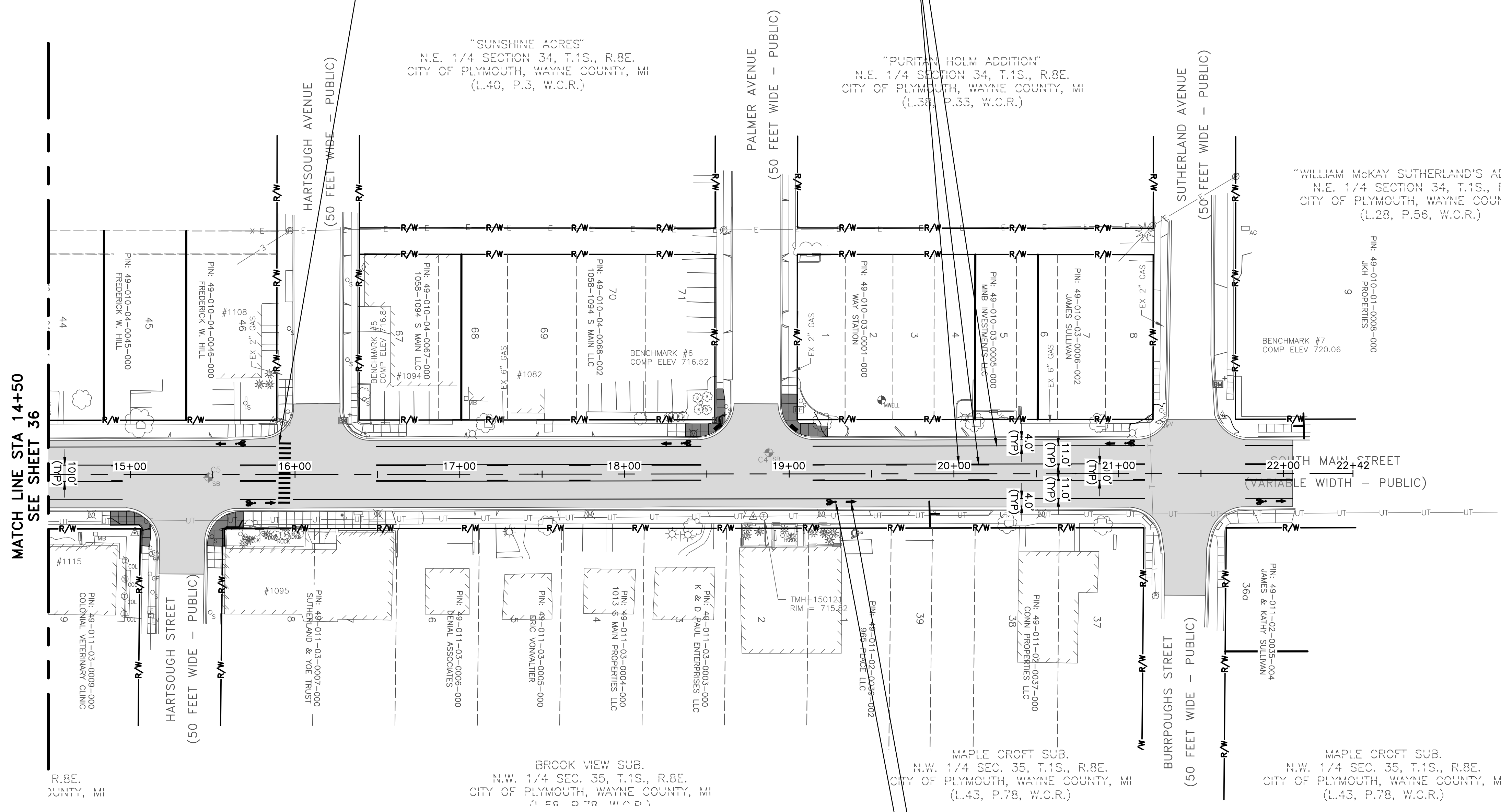


SPECIAL EMPHASIS CROSSWALK. PAVT MRKG, THERMOPLASTIC, 12 INCH, CROSSWALK, WHITE (TYP)

NOTE: THE PROPOSED LOCATION OF THIS CROSSWALK MAY SHIFT TO THE NORTH SIDE OF HARTSOUGH STREET DEPENDING ON THE FINAL DETERMINED LOCATION OF THE RECTANGULAR RAPID FLASHING BEACON (RRFB).

PAVT MRKG, WATERBORNE, 6 INCH, WHITE (SOLID)

PAVT MRKG, WATERBORNE, 4 INCH, YELLOW (SOLID AND BROKEN)



MATCH LINE STA 14+50  
SEE SHEET 36

SUMMARY OF QUANTITIES THIS SHEET			
775	LF	PAVT MRKG, WATERBORNE, 4 INCH, YELLOW	
1350	LF	PAVT MRKG, WATERBORNE, 6 INCH, WHITE	
6	EA	PAVT MRKG, THERMOPLASTIC, BIKE, SMALL SYMBOL	
6	EA	PAVT MRKG, THERMOPLASTIC, DIRECTIONAL ARROW SYMBOL, BIKE	

PAVT MRKG, THERMOPLASTIC, DIRECTIONAL ARROW SYMBOL, BIKE (TYP)

PAVT MRKG, THERMOPLASTIC, BIKE, SMALL SYMBOL (TYP)

PROJECT MANAGER: SHAWN, KEOUGH  
C:\P\1002\10142289\CAD-PLTS-S MAIN RESURFACE PAVEMENT MARKINGS.DWG - LAYOUT (3) - PLOTTED 4/17/2024 11:52 AM BY: FRISK, BRIAN



Know what's below.  
Call before you dig.

REV#	DATE	DESCRIPTION	SWK	BY
1	4/18/24	ADDENDUM 1		

20251 Northline Rd.  
Taylor, MI 48180  
www.wadetrims.com

CITY OF PLYMOUTH  
201 S MAIN ST  
WAYNE COUNTY, MICHIGAN 48170  
2024 INFRASTRUCTURE IMPROVEMENT PROGRAM  
S MAIN STREET - PAVEMENT MARKING PLAN  
STA 14+50 TO STA 22+05

ISSUED FOR:	DATE:	BY:
BID	3-25-24	SWK
JOB NO.	PLY2129-01T	
SHEET	37	

**BENCHMARK#11**      ELEV 736.75

SET MAG. NAIL NORTH SIDE OF UTILITY POLE/LIGHT POLE  
SOUTHEAST SIDE OF E. SPRING ST. AND N. MILL ST.

**BENCHMARK#12**      ELEV 737.60

ARROW ON HYDRANT, SOUTHWEST CORNER OF W. SPRING  
ST. AND STARKWEATHER AVE.

25 LF 12" CL IV CONC STORM SEWER, TRENCH B @ 0.5%

ADJUST RIM  
12" INV S = 727.42

PROPOSED CONCRETE PAVEMENT

PROPOSED CONCRETE E4 CURB  
PER MDT DETAIL R-30-G

PIN: 49-005-03-0068-000  
RICHARD MATSU

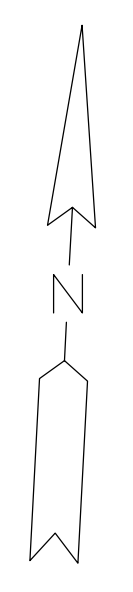
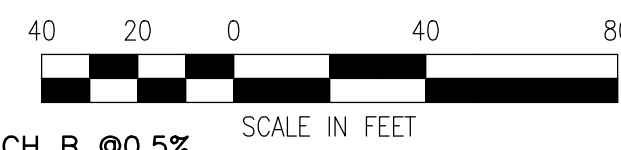
PIN: 49-005-03-0043-000  
KEVIN FELTS

PIN: 49-005-03-0041-000  
NORTH MILL STREET LLC

"ASSESSOR'S PLYMOUTH PLAT NO.18"  
CITY OF PLYMOUTH, WAYNE COUNTY, MI  
(L.66, P.81, W.C.R.)  
PIN: 49-004-01-0488-000  
DENNIS HEINRICH

CB-3  
STANDARD STORM CATCH BASIN  
RIM = 734.25  
12" INV E, W = 727.67  
PLACE 6" UNDERDRAIN  
10' IN 2 DIRECTIONS FROM CB

CB-4  
STANDARD STORM INLET  
RIM = 734.32  
12" INV W 728.03  
PLACE 6" UNDERDRAIN  
10' IN 3 DIRECTIONS FROM CB



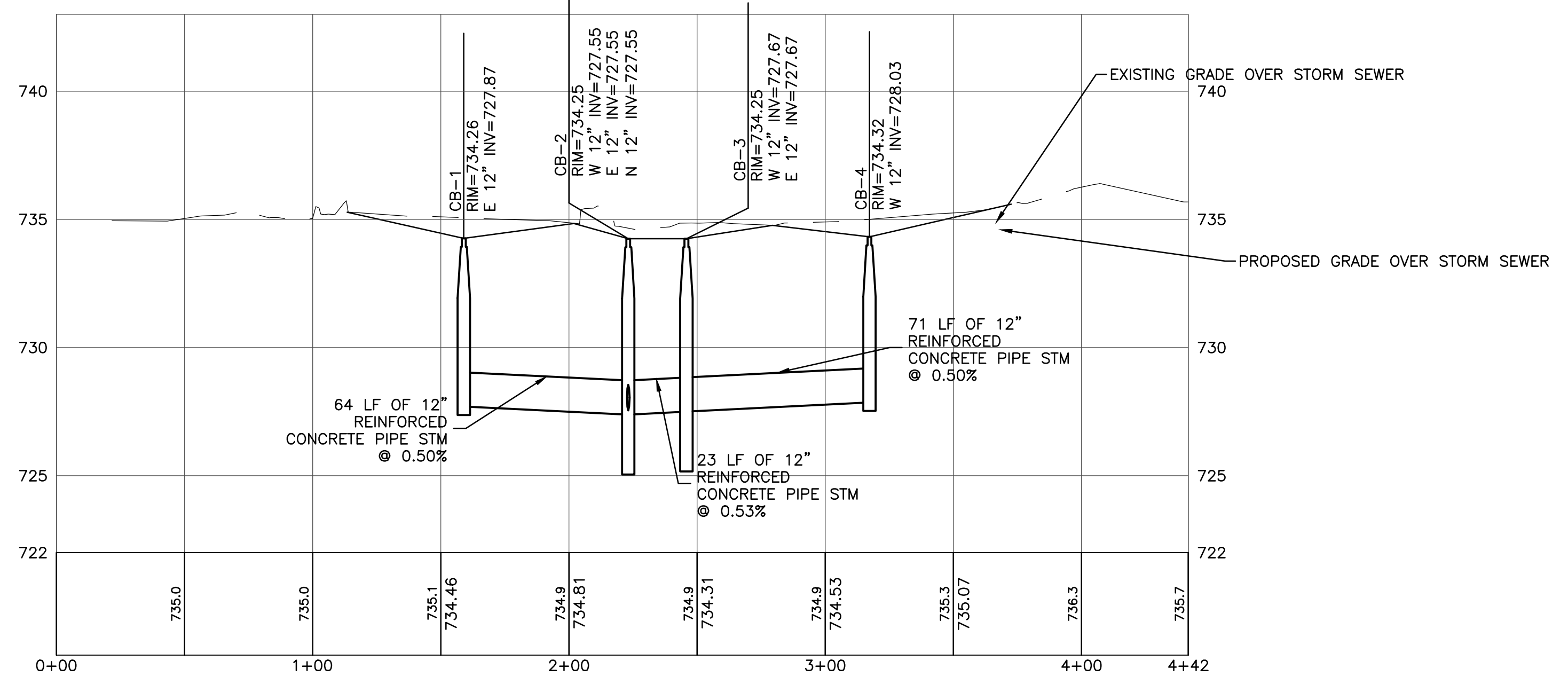
CB-1  
STANDARD STORM INLET  
RIM = 734.26  
12" INV E 727.87  
PLACE 6" UNDERDRAIN  
10' IN 3 DIRECTIONS FROM CB

64 LF 12" CL IV CONC  
STORM SEWER, TRENCH B @0.5%

CB-2  
STANDARD STORM CATCH BASIN  
RIM = 734.25  
12" INV N, E, W = 727.55  
PLACE 6" UNDERDRAIN  
10' IN 1 DIRECTION FROM CB

23 LF 12" CL IV CONC STORM SEWER, TRENCH B @ 0.5%

10'X10' CONCRETE COLLAR (TYP)



**PAVEMENT MARKING QUANTITIES THIS SHEET**

500	FT	PAVEMENT MARKING, WATERBORN, 4-INCH BLUE
700	FT	PAVEMENT MARKING, WATERBORN, 4-INCH WHITE
15	FT	PAVEMENT MARKING, WATERBORN, 24-INCH STOPBAR
60	FT	PAVEMENT MARKING, WATERBORN, 12-INCH CROSSWALK
4	EA	PAVEMENT MARKING, WATERBORN, HANDICAP SYMBOL

**SUMMARY OF QUANTITIES THIS SHEET**

100	CY	SUBGRADE UNDERCUT AND 21AA AGGREGATE BACKFILL
8	VF	RECONSTRUCT STRUCTURE
525	TON	AGGREGATE BASE COURSE, 21AA
225	TON	BITUMINOUS PAVEMENT, WEARING COURSE, 1300T
350	TON	BITUMINOUS PAVEMENT, LEVELING COURSE, 3C
100	LF	CURB AND GUTTER, CONCRETE, DET F4
500	SF	SIDEWALK CONCRETE 4-INCH
150	SF	SIDEWALK RAMP, CONCRETE 6-INCH
4	EA	ADJUST STRUCTURE
1745	LB	REMOVE AND REPLACE FRAME AND COVER
90	LF	UNDERDRAIN, 6-INCH W/ GEOTEXTILE FABRIC WRAP
200	LF	12-INCH STORM SEWER, C76 CLIV, TRENCH B
2	EA	STANDARD STORM INLET
1	LS	PAVEMENT MARKING
6	EA	INLET FILTER
4	EA	REMOVE AND SALVAGE PARKING BUMPER
4	EA	CONCRETE COLLAR
2	EA	STANDARD STORM CATCH BASIN
6	EA	CONCRETE PARKING BUMPER
15	FT	CONCRETE CURB, MDT DET E4

PROJECT MANAGER: SHAWN KEOUGH  
C:\P\WORK\2\0142889\CRG-PLS-SPRING RESURFACE.DWG - LAYOUT1 - PLOTTED: 4/17/2024 11:47 AM BY: FRISK, BRIAN



20251 Northline Rd.  
Taylor, MI 48180  
www.wade-trim.com



CITY OF PLYMOUTH  
201 S MAIN ST  
WAYNE COUNTY, MICHIGAN 48170  
2024 INFRASTRUCTURE IMPROVEMENT PROGRAM  
SPRING STREET  
RESURFACING AND STORM PLAN & PROFILE

ISSUED FOR: DATE: BY:  
BID 3-25-24 SWK

JOB NO.  
PLY2129-01T

SHEET  
43

© Wade Trim Group, Inc. 2024 INFRASTRUCTURE IMPROVEMENT PROGRAM